

Lara Resident

10 March 2021

Dear Resident,

Re: Heavy Vehicle Restrictions, Lara

I write to you to provide an update following the consultation undertaken with the Lara community through 2018-19 to develop the Lara Traffic Management Plan, particularly the action to review truck routes within and around Lara township.

There were numerous concerns raised regarding the volume of trucks on local roads, timing and noise from heavy vehicles (mainly associated with quarry movements) which also created amenity issues to residents.

Our observations confirm trucks use local roads to access the quarries instead of taking more direct routes to access the arterial road network, namely Bacchus Marsh Road.

We have been working with Department of Transport to revise truck routes, directing heavy vehicle traffic to the arterial network and avoiding travelling through the Lara township.

The City will be implementing truck restrictions on the following roads:

Road	Segment
Little River Ripley Road	Sandy Creek Road – You Yangs Road
Farrars Road	You Yangs Road – Branch Road
Branch Road	Forest Road North – Farrars Road
Forest Road North	Windermere Road – Station Lake Road

The City have considered both long and short-term plans to successfully implement restrictions and re-direct heavy vehicles to the arterial road network:

1. The interim solution will make use of existing sealed roads. Heavy vehicles travelling to and from the quarries will do so via Sandy Creek Road, Forest Road North and Windermere Road to Bacchus Marsh Road (see interim truck route map attached).
2. The ultimate solution is to upgrade the northern section of Sandy Creek Road to provide heavy vehicles travelling to and from the quarries direct access to Bacchus

Marsh Road. Preliminary designs have been developed and funding for these works will form part of the Council's consideration in the 2021-22 budget. Once funding is approved and this road is sealed, we will seek approval for further truck bans to remove heavy vehicle access from Forest Road North and Windermere Road (see ultimate truck route map attached).

Truck restriction signage prevents vehicles over 4.5 tonnes passing a truck restriction sign without a permit from VicRoads or City of Greater Geelong, unless the driver is loading or unloading at a location behind the sign and no suitable alternative route is available.

Relevant examples of trucks able to pass a truck restriction sign include:

- Farmers on roads such as Little River Ripley Road will still be able to access their properties
- Trucks accessing residential developments will be able to access developing areas
- Trucks delivering to supermarkets and other retailers will still have access to these locations

The City will maintain the existing load limits in conjunction with the proposed truck restrictions. These limits are considered necessary as any truck that has a legitimate reason to pass the truck restriction signage must still abide by load limit signage. This ensures overweight vehicles do not access these local streets due to limitations of the road or bridge structure. There is no permit that allows a truck to pass a load limit sign if it is over the stated load limit.

As the truck restrictions are installed and come into effect mid-March, you will notice new signs installed on these roads, digital message boards and social media posts on the City's facebook page with updates. You can also visit the Lara Traffic Management Plan webpage at: <https://yoursay.geelongaustralia.com.au/LTMP> that will be updated as we implement the recommendations, including these truck restrictions. The National Heavy Vehicle Regulator (NHVR) will be actively enforcing these truck restrictions to ensure compliance.

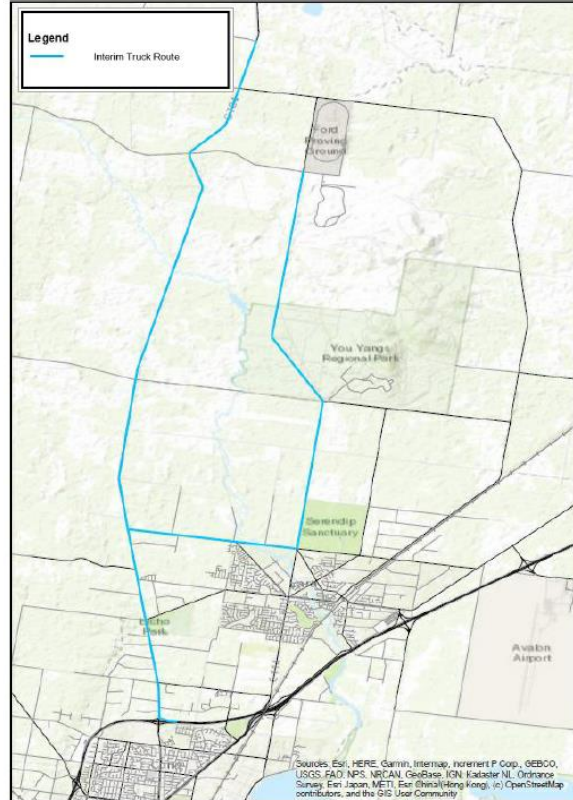
Thank you to the community for raising these road safety concerns with us. If you have any questions please feel free to contact Rohan Lunn on 5272 5272 or email contactus@geelongcity.vic.gov.au.

Yours sincerely



DARREN SAUNDERS
PRINCIPAL ENGINEER – TRANSPORT OPERATIONS
CITY SERVICES

Interim truck route



Ultimate truck route

