

THE CITY OF
GREATER GEELONG

FORMER SOUTH GEELONG LANDFILL SITE LANDSCAPE PLAN

JUNE 2021

FORMER SOUTH GEELONG LANDFILL SITE LANDSCAPE PLAN

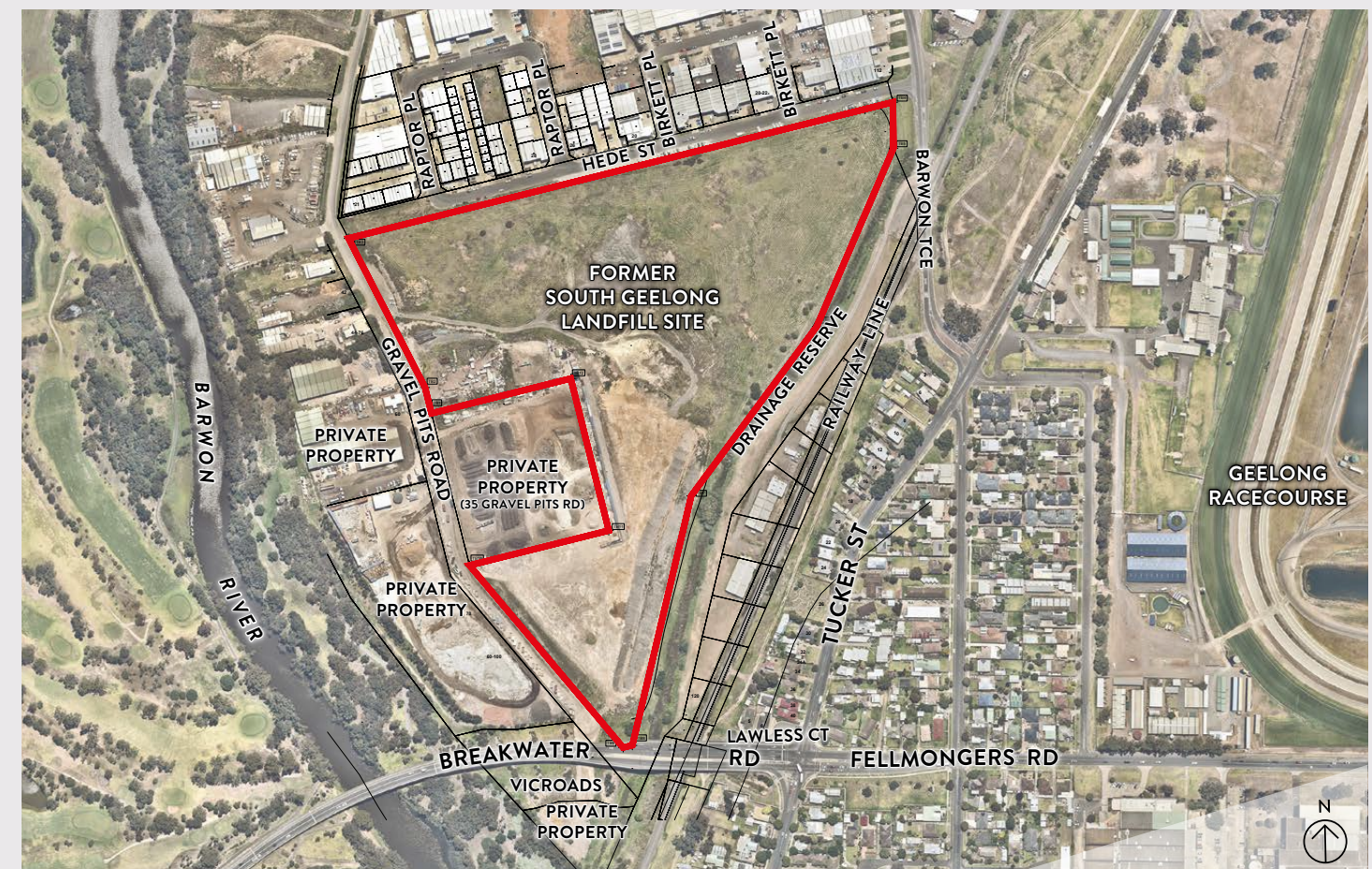
South Geelong Landfill closed in 1990. The site is currently used by City of Greater Geelong to store clean fill from local road and drainage projects, and to assist in recycling and reuse of concrete and other products.

To reduce dust and improve stormwater management and landscape amenity, a new perimeter fence with shade cloth and fill mound is in construction. As sections of the fencing and mound are completed, the site will be reseeded as grass to reduce dust. The outside edge of the

mound will then be mulched and planted with drought tolerant indigenous trees and grasses to screen views into the site.

The works will be completed in multiple stages with the initial fencing and mound works completed by the end of 2021. Fencing will be progressively extended to Hede Street as funding becomes available and revegetation with local indigenous species will commence and continue over following years.

EXISTING CONDITIONS



WHERE ARE WE IN THE PROCESS?



PHASE 1 WEST FENCING

Completed in 2020.



PHASE 2 - EAST FENCING AND MOUND RESHAPING WORKS

In progress, to be
completed by end of
2021.



PHASE 3 - EAST EMBANKMENT REVEGETATION

To commence when
mound works are
finished by end 2022.



PHASE 4 - HEDE STREET FENCING

To commence in 2022.



PHASE 5 - EXTEND FENCING AND MOUND ALONG BARWON TERRACE

To commence in 2023.

FURTHER INFORMATION

If you are interested in this project or require any further information, please contact Jack Taylor, Project Engineer, City of Greater Geelong, Environment and Waste, Tel: 5272 4961, JTaylor2@geelongcity.vic.gov.au
To provide feedback on the draft plan and for engagement updates, visit <http://yoursay.geelongaustralia.com.au>

