

THE CITY OF
GREATER GEELONG

LARA TRAFFIC MANAGEMENT PLAN

2019 -2029

Contents

| | | | |
|---|-----------|---|-----------|
| Executive summary | 3 | 7) Pedestrian and cyclists safety crossing upgrades | 10 |
| Background..... | 4 | <i>Refer: Items 58 to 73.....</i> | <i>10</i> |
| Lara and little river Areas | 4 | 8) Footpath Works | 11 |
| Road Categories | 5 | <i>Refer: Items 74 to 88.....</i> | <i>11</i> |
| Objective | 7 | 9) Lighting Works..... | 11 |
| History | 7 | <i>Refer: Items 89 to 91.....</i> | <i>11</i> |
| Objective | 7 | 10) Traffic Management Works..... | 11 |
| Scope | 7 | <i>Refer: Items 92 to 130.....</i> | <i>11</i> |
| Stage One | 7 | 11) Drainage Works..... | 11 |
| Stage Two | 7 | <i>Refer: Items 131 to 134.....</i> | <i>11</i> |
| Stage Three..... | 7 | 12) Road Maintenance Works | 11 |
| Stage Four..... | 7 | <i>Refer: Items 135 to 151.....</i> | <i>11</i> |
| Community Engagement..... | 8 | 13) Road Upgrade Works | 11 |
| Community Engagement Sessions | 8 | <i>Refer: Items 152 to 166.....</i> | <i>11</i> |
| Stage One | 8 | 14) Bridge Condition Works | 11 |
| Stage Two | 8 | <i>Refer: Items 167 to 171.....</i> | <i>11</i> |
| Stage Three..... | 8 | 15) Environmental Works | 11 |
| Outcomes | 9 | <i>Refer: Items 172 to 174.....</i> | <i>11</i> |
| 1) Truck movements through, within and around Lara township | 9 | 16) Landscape Works..... | 11 |
| <i>Refer: Items 1 to 18.....</i> | <i>9</i> | <i>Refer: Items 175 to 176.....</i> | <i>11</i> |
| 2) 'Six-ways' intersection | 9 | 17) Public Transport | 11 |
| <i>Refer: Items 19 to 23.....</i> | <i>9</i> | <i>Refer: Items 177 to 179.....</i> | <i>11</i> |
| 3) Grade separation of the Geelong rail line and McClelland Avenue..... | 10 | The Action Plan | 12 |
| <i>Refer: Item 24.....</i> | <i>10</i> | Short Term Actions (1-2 years)..... | 12 |
| 4) Review of speed limits on local roads | 10 | Medium Term Action (2-5 years) | 12 |
| <i>Refer: Items 25 to 42.....</i> | <i>10</i> | Long Term Actions (5-10 years) | 12 |
| 5) Lara Station car parking | 10 | Action Plan..... | 13 |
| <i>Refer: Items 43 & 44.....</i> | <i>10</i> | | |
| 6) Intersection upgrades | 10 | | |
| <i>Refer: Items 45 to 57.....</i> | <i>10</i> | | |

Executive summary

The Traffic Management Plan for Lara is a 10 year plan to identify and address traffic related issues within Lara and Little River. This 10 year plan captures the community feedback on safety, amenity and accessibility relating to all modes of movement and transport infrastructure.

The Traffic Management Plan for Lara and Little River included extensive community consultation occurring over 71 days, involving 13 community sessions, access to an online and hardcopy survey, collecting over 340 responses.

Throughout the engagement many issues were raised, and solutions identified.

During the community sessions, the City received 179 individual items relating to safety for pedestrian and cyclists, quarry truck issues, safety for motorists and gaps in transport infrastructure.

The key issues and priority actions for Lara are;

- Implement revisions to truck routes to, within and around Lara township;
- Improvements to the safety and operation of the '6-ways' intersection;
- Grade separation of Geelong Rail Line and McClelland Avenue;
- Car parking capacity of the Lara train station and the impacts to surrounding local streets; and,
- Speed limit reductions of various roads within Lara

The Traffic Management Plan for Lara and Little River has been developed to identify the location of the issue, the responsible authority and the associated action or response with an estimated timeframe.

The Traffic Management Plan for Lara and Little River gives the City a consolidated view of the transport challenges and concerns facing Lara and Little River communities. This plan will enable a targeted approach to prioritise issues and their consideration with other challenges that face the Geelong municipality.

The outcomes of the Traffic Management Plan for Lara and Little River will allow informed budgeting to existing programs and submissions for future budget bids for Council's consideration.

The Traffic Management Plan for Lara and Little River also includes actions that relate to matters that are the

responsibility of State Governments agencies, which allows the City to advocate and seek commitment to these actions.

Background

LARA AND LITTLE RIVER AREAS

The area considered for the Traffic Management Plan for Lara and Little River is bound by Bacchus Marsh Road to the west, Little River Ripley Road to the north and east, including You Yangs Road and the Geelong Ring Road and Princes Freeway to the south (Refer Figure 1).

Lara is the major township at the northern end of the municipality approximately 15 kilometres north of the Geelong Central Activities Area, just west of the Princes Freeway. The township of Lara is over 89 km² in land area and houses over 18,000 residents.

Little River is a rural town located within the Cities of Greater Geelong and Wyndham local government areas. Little River recorded a population of 1,322 residents.

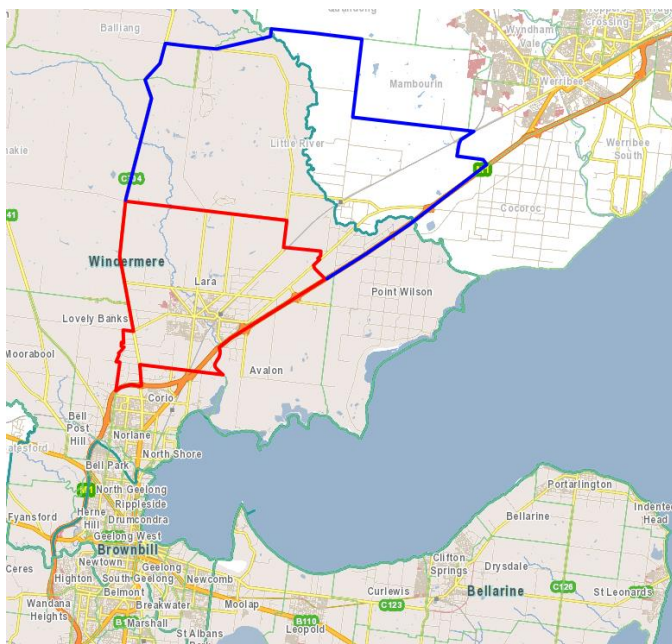


Figure 1: Lara and Little River

Lara is an attractive community, supporting many local attractions, significantly the You Yangs Regional Park and Serendip Sanctuary. Lara also has an extensive community group network, particularly within sport and recreation, including Lara Football and Netball Club, Lara United Football Club, Lara Bowling Club amongst a few. These attractions and local groups and activities attribute the nature of Lara's close community and have significantly grown with residential growth and broader tourism within Lara.

Lara is located between the two major north and south bound arterial routes of Princes Freeway and Bacchus Marsh Road, and has reasonably direct access to these. East – westbound roads such as Windermere Road and Patullos-Station Lake Road provide the connections between the two. Forest Road South, a declared main road, is the main link between Lara and Geelong.

Little River residents experience amenity and safety concerns due to quarry trucks travelling through their township. These quarry trucks travel between Princes Freeway and the quarries in Sandy Creek Road.

Lara Township has key transport services that make Lara an attractive and accessible township, including;

Avalon's international and domestic airport; a major economic, employment and tourism asset to the region.

Lara train station; provides train service connectivity between Lara and Melbourne and to Geelong. Lara Train Station car park was increased to hold more than 585 car spaces. The demand for extra car parking spaces is growing.

The Lara township experienced rapid growth between 1985 and 2006 where the population increased from 5,186 persons to 10,525 persons, and this increase of 5,339 represents a 2.34% p.a. growth rate. The most recent 2016 Census revealed a population of 16,355.

The car ownership in 2016, indicates 65% of households in Lara had access to two or more motor vehicles, compared to 52% in City of Greater Geelong. Travel to work in Lara was 69.5% as driver and people who travel to work by car as driver or passenger was 76.6%. And people who travel to work by public transport was 7.7%. (ABS Data).

Lara has experienced continued growth in recent years with the commencement of Lara West growth area and various subdivisions, including; Manzeene Village; Grand Lakes Estate; Lara Central Estate; Canterbury Lakes Estate; Lara Views Estate; and various other smaller localised subdivisions along with major developments such as the Barwon Prison Precinct. This growth has changed and evolved Lara from a rural township to a now well established and denser residential suburb.

As a result of this growth we know the volume of vehicles on the road network has increased. Assessments are undertaken by applicants, and reviewed by Council and Regional Roads Victoria, on the generation of traffic and the capacity for the road network to cater for these traffic

volume increases. The current network is capable of catering for the above-mentioned growth.

In addition to these localised assessments, the City in partnership with the Department of Transport and the Victorian Planning Authority are undertaking the Geelong Growth Areas Transport Infrastructure Strategy (GGATIS). This strategy will inform how the growth occurring now and, in the future, will impact the transport network, across the entire Geelong municipality. This will give the City and Department of Transport a clear understanding of congestion in the network and required future upgrades. The project seeks to achieve four key objectives:

1. To identify the major transport (road and rail) infrastructure requirements to support the ultimate development scenario in Geelong's growth areas.
2. To identify the requirements and staging of infrastructure based on modelled growth scenarios at intervals of: 2018 (base case - which is validated to current volumes), 2031, 2041 and 2051.
3. To deliver reporting material, communication material and advocacy documentation to facilitate state infrastructure funding and delivery.
4. To form the basis for the identification of mechanisms that may secure a growth area infrastructure contribution for Geelong.

As noted during the community consultations, the main transport issue that concerns Lara residents is the continuing use of Lara's roads by heavy trucks, especially quarry trucks.

Council has commenced identifying revisions to truck routes to, through and within Lara township. The City will work with the Department of Transport to resolve the revisions, before engaging further with the community. The revisions to truck routes will consider such measures as appropriate directional signage, load limits, time curfews and upgrades to other routes to support truck movement.

ROAD CATEGORIES

The map below shows the road categories associated for the roads within Lara and surrounds.

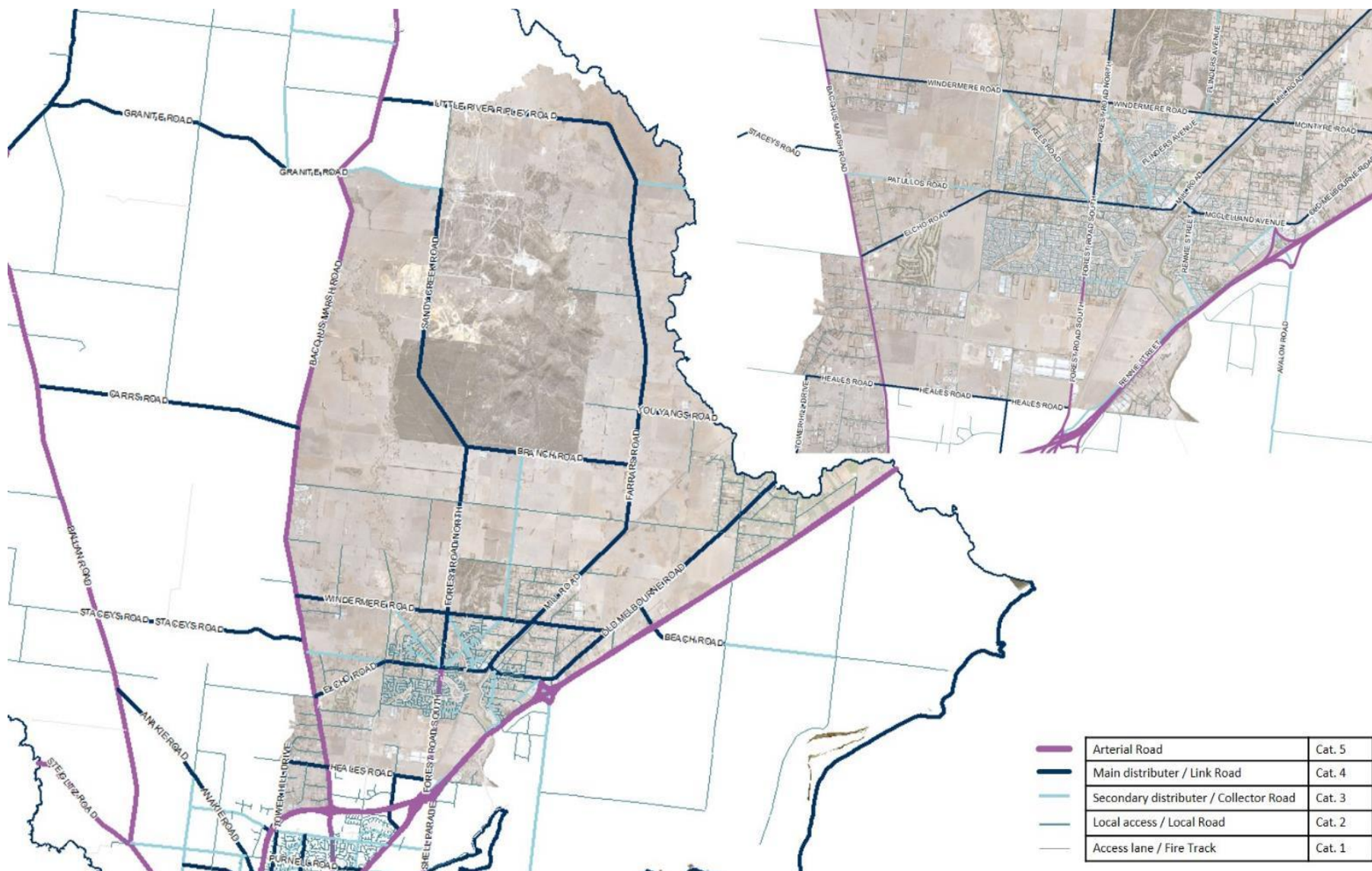
Arterial roads are road category 5 roads. These roads are the responsibility of Regional Roads Victoria and are the highest order roads for vehicle movement. Typically carrying more than 10,000 vehicles per day including all types of vehicles. Heavy vehicles use these roads to move through and around the municipality.

Main distributors, or Link Roads, carry heavy volumes of traffic, including heavy vehicles for local access, and also act as principle routes for traffic flow. These roads supplement the arterial roads and provide the connection between arterial roads and lower order streets. These roads typically carry up to 10,000 vehicles per day.

Secondary distributors, or Collector Roads, carry moderate volumes of traffic and provide a connection between local roads and the distributor road network. In urban areas, these are residential streets. They don't typically cater for heavy vehicle movement, unless required for local access/delivery. These roads typically carry up to 5,000 vehicles per day.

Local access, or Local Roads, carry local residential traffic. Typically short in length, these roads typically carry up to 2,000 vehicles per day.

Access lanes and Fire Tracks are used infrequently and typically carry minimal or no regular daily traffic.



Objective

HISTORY

Over recent years the Lara and Little River community has raised over 200 requests regarding transport safety, movement, parking and access.

OBJECTIVE

The objective of the Traffic Management Plan for Lara and Little River is to undertake a broad community wide engagement to collate the concerns of the community relating to traffic and transport.

As part of this Traffic Management Plan for Lara and Little River, the City intends to categorise community raised concerns into separate themes and identify when the works or actions will be implemented.

The timeframes are divided into three; short, medium and long term, indicating when the works or actions will be carried out. The listed items will be actioned within existing programs or by submitting budget bids for Council consideration for delivery.

- **Short term (1-2 years)** being those concerns that can be mitigated or resolved within a short term (2019/20-2020/21), typically smaller scale solutions. These may be able to be delivered in Councils existing programs, or may require specific budget bids to be submitted for Councils consideration.
- **Medium term (2-5 years)** being those concerns that are typically more complex and need some further investigation to determine the best outcome for the community. These may also be slightly larger in scale and require a specific Council budget bid to fund the implementation, or source external funds to assist delivery.
- **Long term (5-10 years)** being those initiatives that require significantly more planning and development to identify the correct and most appropriate solution. These are typically large projects that require a specific Council budget bid, co-funding with State Government, or rely totally on external funding.

The desired outcome is to have an action plan that captures community concerns, who is responsible for the works and an indication of when these listed items will be implemented.

SCOPE

The Plan was divided into four key stages, centred on community engagement activities.

Stage One

The first stage opened the community engagement process. The objective was to capture the community's initial feedback and concerns. The City then used this feedback to develop the draft 'Traffic Management Plan for Lara and Little River' that responded to the initial concerns raised.

Stage Two

Following the development of the first initial draft plan, the City presented the initial findings to Council, to release for a second round of engagement. The purpose of this second round of engagement was to further capture concerns from the community and to assist further refining the 'Plan'.

Stage Three

The purpose of this stage was to present the final 'Traffic Management Plan for Lara and Little River' to the Department of Transport and Regional Roads Victoria and to seek feedback on their responsibilities within the 'Plan'.

Stage Four

The final stage of the 'Traffic Management Plan for Lara and Little River' was to refine the actions and articulate the key priorities considering the feedback throughout all of the Study's engagement stages.

The City has worked closely with agencies, including the Department of Transport, Transport for Victoria, Public Transport Victoria and Regional Roads Victoria.

The City may have no control over some of the concerns raised that relate to the responsibilities of Department of Transport or Regional Roads Victoria.

Community Engagement

Community engagement throughout the Study was split into three key stages. The engagement involved an on-line survey via, on-line 'have your say', hard-copy surveys and in person community sessions. The engagement was widely publicised, with local community groups, newspaper adverts, social media and local township signage.

There were over 340 comments received which were consolidated into 179 different items and more than 281 people attended the various community sessions throughout the engagement.



13 COMMUNITY
ENGAGEMENT
SESSIONS



71 DAYS
of community
engagement



340+
survey responses

COMMUNITY ENGAGEMENT SESSIONS

Stage One

The City opened an online 'Have Your Say' page from 26 September 2018 through to 22 October 2018. Hard copies were made available on request and written submissions could be mailed in.

The first stage of community engagement sessions were held on Wednesday 10 October 2018 (10am-12pm and 4pm-7pm) and on Saturday 13 October 2018 (9am-12pm). During these three sessions 66 people visited the forum and 111 people provided comments via on-line 'have you say' survey.

The first stage of community consultations assisted forming the draft plan which was presented to Council at the 12 March 2019 Community Focus Council Meeting. The resolution noted further consultation on the draft plan and for the final revised plan to present back to Council for adoption.

Stage Two

The second stage of community engagement sessions consultations commenced 25 March 2019. Community sessions were held on 28 March (4.30pm-7.30pm), 4 April (9am-12pm), 10 April (10am-1pm and 4pm-7pm) and 1 May (10am-12pm and 5pm-7.30pm). During these five sessions 65 people visited the forum and 69 people provided further comments via on-line 'have your say' survey.

Stage Three

The third stage of community engagement sessions was a forum held on the 30 May (7pm-9.30pm). Representatives from Regional Roads Victoria and City of Greater Geelong presented updates on current action plans. More than 100 people attended this forum

Outcomes

From the thirteen community sessions, on-line survey and ‘have your say’, a total 343 comments were raised, across a range of transport and infrastructure topics.

The 343 comments from the community relate to 179 individual items throughout the Lara community area, and have been articulated in the ‘Traffic Management Plan for Lara and Little River’ Plan.

Throughout the engagement sessions many issues were raised that were not only recurring themes in the communities comments, but also significant issues for the broader Lara community.

Some of the 179 items in the Plan have been identified as short term actions and may have been completed, are in progress or have been identified and incorporated into 2019-20 programs. The remaining actions will continue to be developed and referred to future year programs or require additional funding through Council budget bid process or external funding grants.

Key Priority Actions

1) Truck movements through, within and around Lara township

Refer: Items 1 to 18

Concerns regarding truck movements through Lara have been an increasingly consistent concern raised by residents. Particularly those heavy vehicles and trucks associated with residential subdivisions and the quarries located along Sandy Creek Road. The key concerns regarding truck movements are that quarry trucks are creating amenity issues to residents, particularly along Branch Road, Forest Road North, Forest Road South, Windermere Road, Patullos Road, Station Lake Road and McClelland Ave. Our observations have shown that trucks use local roads to access the quarries and residential developments.

- An outcome of the ‘Traffic Management Plan for Lara and Little River’ has recommended revisions to truck route through Lara. The revisions are to consider all truck travel within Lara in order to identify suitable routes for truck haulage and truck travel times, which will result in recommendations to any changes of the Regional Roads Victoria approved Heavy Vehicle Routes.
- Background work has commenced on reviewing existing and potential truck routes, including the

consideration of the feedback received from community engagement to-date from this plan. Further engagement with the community will occur on the revised routes.

- The implementation of revisions will include the consideration of appropriate measure to restrict trucks from local streets, particularly those being used for ‘through township’ movement
- Interventions such as time curfews, load limits, appropriate signage, upgrades to alternate routes and reviewing the designated routes under the Regional Roads Victoria approved Heavy Vehicle Routes, will be considered as part of the implementation of revisions to truck routes in Lara.
- Significant investment will be required for such actions that require the upgrade or sealing of identified alternate routes.

2) ‘Six-ways’ intersection

Refer: Items 19 to 23

The Lara Community raised safety and accessibility issues in regards to the Six-Ways intersection;

- The issues raised varied from; access and safety for cyclists navigating through the roundabout, safety concerns with heavy vehicles moving through the roundabout, difficulty and safety concerns for pedestrians crossing at the roundabout, traffic congestion due to the volume of vehicles passing through the roundabout, vehicle speed and associated safety concerns, lighting within the roundabout, line marking within the roundabout and improvements to existing pedestrian crossing infrastructure to improve safety for pedestrians
- Regional Roads Victoria has undertaken community consultation on the design and layout of a new intersection for Six-ways. They recommended two options including a new roundabout or traffic signals at the intersection. In the short-term Regional Roads Victoria are in the process of finalising the design of the proposed new intersection. The feedback received from ‘The Lara Traffic Management Plan’ has been passed onto Regional Roads Victoria for their consideration in the design process. Once the design is finalised the construction of the new intersection will be submitted with other regional projects in Regional Roads Victoria’s budget process.

3) Grade separation of the Geelong rail line and McClelland Avenue

Refer: Item 24

A recurrent theme throughout 'The Lara Traffic Management Plan' engagement related to the rail crossing of McClelland Avenue. Concerns specifically related to the congestion and safety of pedestrians and vehicles at the railway crossing, condition of the road surface across the rail tracks and delays for emergency vehicles wanting to cross the rail line. The grade separation would improve traffic movements from Station Lake Road to McClelland Avenue.

- During one of the community consultation sessions, Department of Transport discussed the grade separation (road over rail) issue with the community. The State Government's Level Crossing Removal Authority has this crossing listed on their 'top 300 sites for removal' and at the time of this Plan ranked 169 in Victoria.
- The Geelong to Melbourne rail corridor is being reviewed as part of the Western Rail Plan [Geelong to Melbourne rail corridor improvements for fast rail & electrification]. Future plans for the existing level crossing are unknown at this stage. This crossing is not one of the 75 funded grade separation sites across the state.
- The City will continue to advocate with the community to the State Government for the grade separation to be committed for delivery.

4) Review of speed limits on local roads

Refer: Items 25 to 42

The community identified a number of roads within Lara for speed reductions. The City has commenced reviewing these roads to assess the appropriateness of these requests and then develop and submit applications to Regional Roads Victoria to consider. The City has reviewed the requests and also consulted Victoria Police for their support of speed reductions on these identified roads. Speed limit applications were submitted to Regional Roads Victoria (RRV) commenced in July 2019 and are continuing with review

5) Lara Station car parking

Refer: Items 43 & 44

There is a demand for parking at the Lara Train Station during morning peak times. The community raised a number of comments in relation to Transport for Victoria's car parking associated with the Lara Train Station, these comments related to: Not enough car parking spaces within the Lara Station Car Park; Overflow parking occurring on unsealed areas within Lara Train Station; The overflow parking creating a safety hazard in Hicks Street; The overflow of parking into local roads creates amenity issues in surrounding streets.

Department of Transport have commenced investigating parking demands at each train station from Lara to Warrnambool as part of a Commuter Car Parking study. The study identifies requirements to meet growth in 2041.

The City will continue to advocate to the Department of Transport for interim measures to be considered, as well as implement measures to assist mitigating the impacts of overflow parking in surrounding local streets.

6) Intersection upgrades

Refer: Items 45 to 57

Community members commented on many intersections that are 'unsafe' for pedestrians and cyclists. The Lara Community requested the City and Regional Roads Victoria to investigate ways to improve safety at these intersections. Some of the concerns are related to poor intersection sight distance, issues with safety at intersections, poor safety due to high speeds of vehicles, and unsafe pedestrian crossing infrastructure;

The City has commenced discussing this intersections with Regional Roads Victoria to identify safe solutions. Any works within Forest Road South will be the responsibility of Regional Roads Victoria and will be subject to State Government funding.

7) Pedestrian and cyclists safety crossing upgrades

Refer: Items 58 to 73

The City has constructed Stage One of the Hovells Creek shared path, which extends from Station Lake Road to Flinders Avenue along Hovells Creek. This stage of the shared path did not include a crossing of Station Lake Road

in the scope of works. The community expressed concerns regarding the safety of crossing Station Lake Road, particularly school children at peak times. The City is reviewing the location to improve safety to pedestrians, cyclists and people using motorised mobility devices.

8) Footpath Works

Refer: Items 74 to 88

The community identified a number of roads that require footpaths for safe accessibility. In Lara there are many roads without footpaths. The City has listed all these requests for footpaths in addition to existing gaps previously identified.

9) Lighting Works

Refer: Items 89 to 91

The community identified a number of roads that require street lighting improvements to improve community safety. The City has commenced investigations to upgrade street lighting.

10) Traffic Management Works

Refer: Items 92 to 130

The community raised a number of traffic management issues that vary from school drop off and pick up, safe vehicle accessibility to traffic lane configurations and new road connections. All these issues are investigated, and solutions are been programmed into City's infrastructure works programs.

Further to this, the community have raised concerns about the volume and access to the gaol's located along Bacchus Marsh Road. The City is raising these concerns and will request appropriate signage to direct visitors to use Princes Freeway and Bacchus Marsh Road, to deter visitors from travelling through the Lara township.

11) Drainage Works

Refer: Items 131 to 134

The community raised four issues related to poor drainage. These matters were referred to the Lara Flood Study team to investigate.

12) Road Maintenance Works

Refer: Items 135 to 151

Road maintenance was one of the key items raised during the community sessions. In Lara there are many gravel roads that needs constant maintenance. Issues pertaining to road maintenance varied from pot holes, to grading gravel roads, to vegetation on the road shoulders.

13) Road Upgrade Works

Refer: Items 152 to 166

The Community identified roads for sealing due to the on-going safety issues, such as pot holes, dust and amenity. They requested these roads to be sealed and to have kerb and channel works and lighting.

14) Bridge Condition Works

Refer: Items 167 to 171

The community raised five items in regard to bridge conditions.

15) Environmental Works

Refer: Items 172 to 174

Lara residents requested the City improve roadside waste management, due to roadside 'rubbish dumping and littering'.

16) Landscape Works

Refer: Items 175 to 176

The community requested the City to improve beautification and landscaping works on Forest Road North to attract tourists visiting You Yangs Reserve.

17) Public Transport

Refer: Items 177 to 179

The last section refers to 'Public Transport' service times, new connection to Avalon Airport and direct bus services from Lara to Geelong.

THE ACTION PLAN

The 343 comments, concerns and feedback received from the community throughout the engagement process have identified 179 items and actions. Each action has been identified as Short, Medium or Long term response, with the associated responsible authority (being City of Greater Geelong, Regional Roads Victoria (formerly VicRoads), or Department of Transport.

Short Term Actions (1-2 years)

Short term actions are items that can be mitigated or resolved with a quicker response (~0-2 years) and are typically smaller scale solutions. These may be covered in Councils existing programs or may require specific budget bids to be submitted for Councils consideration over the next two budgets.

Medium Term Action (2-5 years)

Medium term actions respond to concerns that are typically more complex and need some further investigation to determine the best outcome for the community. These may also be slightly larger in scale and require a specific Council budget bid to fund the implementation, or source external funds to assist delivery.

Long Term Actions (5-10 years)

Long term actions respond to initiatives that require significantly more planning and development to identify the correct and most appropriate solution. These are typically large projects that require a specific Council budget bid, co-funding with State Government, or rely totally on external funding.

The City will also record the frequency of the concerns raised by the community. This allows the priority actions to be considered against other competing demands throughout the rest of Geelong.

The desired outcome is to have an action plan that captures the feedback from the broader community, what the community has told us, who is responsible, what can be done and an indication of when something will be implemented.

Action Plan

| No. | Mode | Location | Issues | Responsible Authorities | Description | Timing | Status | Year |
|--|----------------|-------------------|--|--|---|--------|--------|-------------------|
| 1. TRUCK MOVEMENTS THROUGH, WITHIN AND AROUND LARA TOWNSHIP | | | | | | | | |
| 1 | Heavy Vehicles | 6 Ways | Request to remove Heavy Vehicles from 6 Ways to improve safety. | City of Greater Geelong & Department of Transport | Potential solutions to address safety and amenity concerns with heavy vehicles are being considered as part of implementing revisions to the truck routes In Lara. Department of Transport will be a key partner in supporting revisions and ultimate approval to changes to the Heavy Vehicle Route register. | Short | Open | 2019/20 - 2020/21 |
| 2 | Heavy Vehicles | Branch Road | Request to restrict trucks along narrow Branch Road to improve amenity to residents, provide safety to cyclists and visitors to You Yangs Reserve. It was also noted many animal deaths on the road (Kangaroo deaths). | City of Greater Geelong & Department of Transport | As mentioned in the Outcome section of the Plan, various control measures and upgrades will be considered in reviewing the entire network of truck routes across Lara. Further detailed work is required to finalise the revisions and will involve further community engagement. | Short | Open | 2019/20 - 2020/21 |
| 3 | Heavy Vehicles | Forest Road North | Request to review truck travel in Forest Road North to improve amenity and truck issues. | City of Greater Geelong & Department of Transport | Upgrades to Sandy Creek Road are a critical factor in supporting trucks to use alternate routes and access Bacchus Marsh Rd. In addition to this, other measures will be considered, such as appropriate signage, time curfews and potential speed limit reductions. Department of Transport will be a partner in finalising these revisions. | Short | Open | 2019/20 - 2020/21 |

| No. | Mode | Location | Issues | Responsible Authorities | Description | Timing | Status | Year |
|-----|----------------|---------------------------|--|--------------------------------|---|--------|--------|-------------------|
| 4 | Heavy Vehicles | Forest Road North & South | Reducing Heavy Vehicles on Forest Road South - Forest Road South is a declared arterial road and the favoured route to carry truck traffic relative to local residential routes. | Department of Transport | The City have commenced the initial preparations of reviewing Lara truck routes. As an arterial road, we will require input and input from Regional Roads Victoria. Further action will be taken after the completion and acceptance of this Plan. The implementation will consider measures to appropriately direct trucks to desired routes, including potential time curfews and supporting directional signage. Enforcement of these time curfews will be a key step in implementing these actions. | Short | Open | 2019/20 - 2020/21 |
| 5 | Heavy Vehicles | Little River Ripley Road | Request to review the Little River Ripley Road for trucks to enter Bacchus Marsh Road via sandy Creek Road and avoid travelling south via Lara City Centre. | City of Greater Geelong | Upgrades to Sandy Creek Road are a critical factor in supporting trucks to use alternate routes and access Bacchus Marsh Rd. As Little River Ripley may be the connection between Sandy Creek Road and Bacchus Marsh Road, this will need further detail geotechnical investigation. In addition to this, other measures will be considered, such as appropriate signage, time curfews and potential speed limit reductions. Department of Transport will be a partner in finalising these revisions. | Short | Open | 2019/20 - 2020/21 |
| 6 | Heavy Vehicles | McClelland Avenue | Request to review existing truck advisory signs and also to install 'truck engine brake warning' signs. | City of Greater Geelong | City to investigate and remove 'truck advisory' signs and install 'truck engine brake signs' | Short | Open | 2019/20 - 2020/21 |

| No. | Mode | Location | Issues | Responsible Authorities | Description | Timing | Status | Year |
|-----|----------------|--------------------------|--|--|---|----------------|--------|-------------------|
| 7 | Heavy Vehicles | McClelland Avenue | Request to review truck travel through McClelland Avenue. | City of Greater Geelong & Department of Transport | <p>As part of the revisions to truck routes through Lara, the need for McClelland Ave to support movement of through truck movement will be reviewed. Preliminary work has identified that the section of McClelland Ave between Avalon Road and the Geelong rail line is not required for truck access.</p> <p>The revisions to truck routes will also consider measures to appropriate direct trucks to desired routes, including potential time curfews and supporting directional signage.</p> <p>Department of Transport will provide in kind support to assist City to undertake the review and implement the outcomes.</p> | Short | Open | 2019/20 - 2020/21 |
| 8 | Heavy Vehicles | Patullos Road | Request to install new signs to reduce truck noise. | City of Greater Geelong | To investigate the need for 'truck engine brake signs' | Short | Open | 2019/20 - 2020/21 |
| 9 | Heavy Vehicles | Station Lake Road | Review to remove advisory truck route sign at station lake road. | City of Greater Geelong | The review of truck routes in Lara will consider the removal of advisory signs on Station Lake Road. The review will also consider measures to appropriate direct trucks to desired routes, including potential time curfews and supporting directional signage. | Short | Open | 2019/20 - 2020/21 |
| 10 | Heavy Vehicles | Little River Ripley Road | Request to seal and upgrade Little River Ripley Road to allow trucks to enter Bacchus Marsh Road. This would allow quarry trucks to travel | City of Greater Geelong | As part of City's long term strategic view to address quarry truck circulations, to review the need to seal and upgrade Little River Ripley Road between Bacchus Marsh Road & Sandy | Short - Medium | Open | 2019/20 - 2024/25 |

| No. | Mode | Location | Issues | Responsible Authorities | Description | Timing | Status | Year |
|-----|----------------|-----------------------|---|--|--|----------------|--------|-------------------|
| | | | north via Sandy Creek Road and use Little River Ripley Road and enter Bacchus Marsh Road. | | Creek Road to promote quarry truck access to Bacchus Marsh Road will also be considered. | | | |
| 11 | Heavy Vehicles | Sandy Creek Road | Request to seal Sandy Creek Road between Granite Road & Little River Ripley Road to promote truck access to Bacchus Marsh Road. | City of Greater Geelong | In the 'short term', City to decide whether to upgrade Sandy Creek Road between Granite Road and Little River Ripley Road to promote quarry truck access to Bacchus Marsh Road via Little River Ripley Road. This will require significant investment. | Short - Medium | Open | 2019/20 - 2024/25 |
| 12 | Heavy Vehicles | Windermere Road | Request to restrict trucks movements along Windermere Road East, where there is a 'no truck' sign. | City of Greater Geelong | This was referred to Regional Roads Victoria to monitor and restrict trucks from travelling through the 'no truck' limits. | Short - Medium | Open | 2019/20 - 2024/25 |
| 13 | Heavy Vehicles | Forest Road South | Request to install 'new' load limits in Forest Road South to Canterbury Road. | City of Greater Geelong | New request to be reviewed by Regional Roads Victoria and considered in overall revisions | Short - Medium | Open | 2021/22 - 2024/25 |
| 14 | Heavy Vehicles | Little River Township | Request to identify the impact of trucks on the township | City of Greater Geelong | The proposed truck route revisions will identify the impact to Little River township due to quarry trucks and other heavy vehicles. | Medium - Long | Open | 2024/25 - 2029/30 |
| 17 | Heavy Vehicles | Mill Road | Request to restrict B-Double and introduce 5 Tonne Load limit | City of Greater Geelong & Department of Transport | Potential solutions to address safety and amenity concerns with quarry and other heavy vehicles will be considered as part of the revision to truck routes in Lara. Enforcement of | Medium | Open | 2021/22 - 2024/25 |

| No. | Mode | Location | Issues | Responsible Authorities | Description | Timing | Status | Year |
|-----------------------------------|--------------------|--------------|--|--|---|--------|--------|-------------------|
| | | | | | these restrictions will be a key step in implementing these actions. | | | |
| 18 | Heavy Vehicles | Granite Road | Request to review and seal Granite Road as an 'alternative truck access' to Bacchus Marsh Road. Also review intersection upgrade at Bacchus Marsh Road to improve safe entry and exit. | City of Greater Geelong & Regional Roads Victoria | To review the need to upgrade Granite Road as part of the truck route revision. | Long | Open | 2024/25 - 2029/30 |
| 2. 'SIX-WAYS' INTERSECTION | | | | | | | | |
| 19 | Cycling | 6 Ways | Improve bicycle access through the roundabout. | Regional Roads Victoria & City of Greater Geelong | Regional Roads Victoria have developed a low cost improvement including: Bike lanes within the 6 way roundabout to increase awareness of cyclists. | Short | Open | 2019/20 - 2020/21 |
| 20 | Pedestrians | 6 Ways | Improve pedestrian infrastructure. | Regional Roads Victoria & City of Greater Geelong | Regional Roads Victoria to undertake an assessment of feasibility of pedestrian crossing infrastructure at the roundabout. Investigation Stage. | Medium | Open | 2021/22 - 2024/25 |
| 21 | Traffic Congestion | 6 Ways | If appropriate, install traffic signals at the 6 ways to improve pedestrian safety, vehicle accessibility from Flinders Avenue and to | Regional Roads Victoria | Regional Roads Victoria have undertaken an assessment of the future needs of the intersection and the technical investigations identified traffic signals as the preferred treatment, which is supported by the Lara community. Regional Roads Victoria indicated | Long | Open | 2024/25 - 2029/30 |

| No. | Mode | Location | Issues | Responsible Authorities | Description | Timing | Status | Year |
|---|--------------------|---------------------------------------|--|--|--|--------|--------|-------------------|
| | | | reduce congestion during peak times. | | that the construction of traffic signals will depend on future growth from Lara West and delays in peak hours. To gain full benefits from the intersection treatment, the whole east-west corridor needs to be upgraded. The cost of intersection upgrade ~\$12-15 Million. | | | |
| 22 | Traffic Management | 6 Ways | Review 'No Stopping' limits on Forest Road South from the 6 way roundabout to improve traffic circulation. | City of Greater Geelong | To review existing location of the 'No Stopping' sign posts and take appropriate action to address any circulation issues in Forest Road South. | Short | Open | 2019/20 - 2020/21 |
| 23 | Traffic Speed | 6 Ways | Request to install 40km/hr speed limit within the 6 way roundabout. | Regional Roads Victoria & City of Greater Geelong | Regional Roads Victoria will undertake a speed limit review in the 6 ways precinct, and determine if a lower limit is suitable. | Short | Open | 2019/20 - 2020/21 |
| 3. GRADE SEPARATION OF THE GEELONG RAIL LINE AND MCCLELLAND AVENUE | | | | | | | | |
| 24 | Traffic Congestion | Rail Overpass - At Lara Train Station | Request for a 'Rail Overpass or Underpass' at McClelland Ave level crossing to improve congestion and accessibility. | Department of Transport | <p>The Geelong to Melbourne rail corridor is reviewed as part of the Western Rail Plan [Geelong to Melbourne rail corridor improvements for fast rail & electrification]. Future plans for the existing level crossing are unknown at this stage. Department of Transport states that this crossing is not one of the 75 funded grade separation sites across the state.</p> <p>The City have also written to the CEO of PTV requesting urgent maintenance to the existing crossing surface.</p> | Long | Open | 2024/25 - 2029/30 |

| No. | Mode | Location | Issues | Responsible Authorities | Description | Timing | Status | Year |
|---|---------------|-------------------|---|--------------------------------|--|--------|--------|-------------------|
| 4. REVIEW OF SPEED LIMITS ON LOCAL ROADS | | | | | | | | |
| 25 | Traffic Speed | Branch Road | The speed limit of 100km/hr is high. This road caters for cyclist & tourists to You Yangs. Reduce it to 80 Km/Hr between Flinders Avenue & Forest Road North. | City of Greater Geelong | To review Branch Road (between Flinders Avenue & Forest Road North) traffic speeds according to 'Speed Limit Guidelines' and if warrants are met, a formal speed reduction application will be forwarded to Regional Roads Victoria. | Short | Open | 2019/20 - 2020/21 |
| 26 | Traffic Speed | Buckingham Street | Request to monitor vehicle speeds in Buckingham Street. | City of Greater Geelong | 50 km/h signs installed. The average speed is 49.4 km/h [8 Feb 2019]. | Short | Closed | |
| 27 | Traffic Speed | Forest Road North | Request to review and reduce existing posted speed limits between Branch Road & Windermere Road. | City of Greater Geelong | To review Forest Road North speeds according to 'Speed Limit Guidelines' and if warrants are met, a formal speed reduction application will be forwarded to Regional Roads Victoria. | Short | Open | 2019/20 - 2020/21 |

| No. | Mode | Location | Issues | Responsible Authorities | Description | Timing | Status | Year |
|-----|---------------|-------------------|---|--------------------------------|---|--------|--------------------|----------------------|
| 28 | Traffic Speed | Hicks Street | Request to reduce speed limits in Hicks Street (near Lara Train Station) between Bates Road & McClelland Avenue to 40km/h to improve pedestrian safety and vehicle movements. | City of Greater Geelong | To discuss speed reduction in Hicks Street to 40km/hr (between Bates Road & McClelland Avenue) with Regional Roads Victoria . City plans to improve Hicks Street line marking as part of this project. To address pedestrian safety & vehicle circulation, to discuss with Department of Transport and propose to install a footpath on the west side and to formalise existing parking bays to improve sight lines for motorists who are accessing the train station during peak times. Funding for the footpath works will be discussed with Department of Transport. | Short | Approved - Open | 2019/20 - 2020/21 |
| 29 | Traffic Speed | McClelland Avenue | Request to review and reduce posted speed limit of 80 km/hr in McClelland Avenue to improve safety for turning vehicles. | City of Greater Geelong | To review speed limits in McClelland Avenue and apply to Regional Roads Victoria for a speed reduction to improve safety to motorists. City to monitor. | Short | Approved - Open | 2019/20 - 2020/21 |
| 30 | Traffic Speed | Mill Road | Request to extend the existing 80km/h speed limit to Plains Road. | City of Greater Geelong | To reviewing Mill Road speeds according to 'Speed Limit Guidelines' and if warrants are met, a formal speed reduction application will be forwarded to Regional Roads Victoria. | Short | Approved - Open | 2019/20 - 2020/21 |
| 31 | Traffic Speed | Patullos Road | Request to reduce posted speed limit to 60km/hr in Patullos Road to provide safety to turning vehicles at O'Halloran's Road. | City of Greater Geelong | To review Patullos Road speeds according to 'Speed Limit Guidelines' and if warrants are met, a formal speed reduction application will be forwarded to Regional Roads Victoria. | Short | Open | 2019/20 - 2020/21 |

| No. | Mode | Location | Issues | Responsible Authorities | Description | Timing | Status | Year |
|-----|---------------|------------------|--|--------------------------------|---|--------|--------|-------------------|
| 32 | Traffic Speed | Peak School Road | Request to review and reduce posted speed limit to 80km/h. | City of Greater Geelong | Peak School Road is a gravel 100km/h road. to review Peak School Road speeds according to 'Speed Limit Guidelines' and if warrants are met, a formal speed reduction application will be forwarded to Regional Roads Victoria. | Short | Open | 2019/20 - 2020/21 |
| 33 | Traffic Speed | Perkins Road | Request to review and maintain 60 km/h and 5T load limit. | City of Greater Geelong | No change to existing conditions proposed at this time. To monitor traffic speeds. | Short | Closed | |
| 34 | Traffic Speed | Plains Road | Request to review and reduce speed limit to 80km/h, due to gravel surface. | City of Greater Geelong | Plains Road is a gravel 100km/h road. To review Plains Road speeds according to 'Speed Limit Guidelines' and if warrants are met, a formal speed reduction application will be forwarded to Regional Roads Victoria. | Short | Open | 2019/20 - 2020/21 |
| 35 | Traffic Speed | Sandy Creek Road | Request to review & reduce speeds to 80 km/h. | City of Greater Geelong | The average speed was 94.1km / hr (Oct 2017), between Granite Rd & Forest Rd North. To review Sandy Creek Road speeds according to 'Speed Limit Guidelines' and if warrants are met, a formal speed reduction application will be forwarded to Regional Roads Victoria. | Short | Open | 2019/20 - 2020/21 |
| 36 | Traffic Speed | Walkers Road | Request to reduce posted speed limit to 40 km/h. | City of Greater Geelong | Further investigation required. Average speed of vehicles in Walkers Road is 40.3 km/h. (21 Nov 2017) [In 2010, the average speed was 46.2 km/h]. Based on the existing, no speed limit reduction required. | Short | Closed | |

| No. | Mode | Location | Issues | Responsible Authorities | Description | Timing | Status | Year |
|-----|---------------|-------------------|--|--------------------------------|--|--------|--------|-------------------|
| 37 | Traffic Speed | Waverley Road | Requests to reduce posted speed limits to 40km/hr or install 50km/hr signs, due to schools and kindergartens nearby. | City of Greater Geelong | To review Waverley Road speeds according to 'Speed Limit Guidelines' and if warrants are met, a formal speed reduction application will be forwarded to Regional Roads Victoria. | Short | Open | 2019/20 - 2020/21 |
| 38 | Traffic Speed | Windermere Road | Request to review and reduce posted speed limits near Serendib Sanctuary. | City of Greater Geelong | This road has a posted speed limit of 80km and the average speed of vehicles was 78.5 km/h. (8 Mar 2019). The posted speed limit is consistent with the environment and 'Speed Limit Guidelines' to install 'stop/Look/Listen' warning signs on the footpath to promote safety to pedestrians. To monitor. | Short | Open | 2019/20 - 2020/21 |
| 39 | Traffic Speed | Curlettes Road | Request to review and reduce posted speed limits. | City of Greater Geelong | New request to be reviewed | Short | Open | 2021/22 - 2024/25 |
| 40 | Traffic Speed | Buckingham Street | Request to review and reduce posted speed limits due to two 'early learning / child care centres' on this street. | City of Greater Geelong | New request to be reviewed | Short | Open | 2021/22 - 2024/25 |
| 41 | Traffic Speed | Flinders Avenue | Request to review and slow existing speed limits. This is unsafe for cyclist to ride in 100 km/h zone. | City of Greater Geelong | To review Flinders Avenue speeds according to 'Speed Limit Guidelines' and if warrants are met, a formal speed reduction application will be forwarded to Regional Roads Victoria. | Medium | Open | 2021/22 - 2024/25 |

| No. | Mode | Location | Issues | Responsible Authorities | Description | Timing | Status | Year |
|------------------------------------|--------------------|--|--|--------------------------------|---|---------------|--------|-------------------|
| 42 | Traffic Speed | Canterbury Road / Canterbury Road East | Request to consider installing traffic calming in Canterbury Road West to reduce entering vehicle speeds to Forest Road South. | City of Greater Geelong | Investigated this intersection and have completed gathering data via 'traffic classier counts'. To identify most appropriate LATM treatment and then it would be listed in the Capital Works Program. | Medium - Long | Open | 2024/25 - 2029/30 |
| 5. LARA STATION CAR PARKING | | | | | | | | |
| 43 | Traffic Management | Lara Railway Station - commuter parking on local roads | Request to review existing on road parking in Local roads due to commuter parking demands. | City of Greater Geelong | Commenced investigating parking occupancy levels in local streets (Bates Road, Clover Street, Lockyers Road and Hicks Road past bates Road). | Short | Open | 2019/20 - 2020/21 |
| 44 | Public Transport | Lara Train Station Car Park shortages | Request to improve car parking shortage and to improve 'Park & Ride' at Lara station. | Department of Transport | Department of Transport has undertaken a study that investigated the existing capacity and occupancy of both on and off-street parking at Lara Station. The Strategy estimated that an additional 1,200 car parking spaces could be required at Lara station by 2041 based on forecasted patronage. The Department of Transport have not indicated any immediate actions. | Medium | Open | 2021/22 - 2024/25 |
| 6. INTERSECTION UPGRADES | | | | | | | | |

| No. | Mode | Location | Issues | Responsible Authorities | Description | Timing | Status | Year |
|-----|--------------------|--|---|--------------------------------|---|----------------|--------|-------------------|
| 45 | Traffic Management | Intersection - Forest Road South and Canterbury Road | Request to review the roundabout at this intersection. This has become a high risk accident zone due to limited sight lines from Forest Road South. | Regional Roads Victoria | To discuss improvements with Regional Roads Victoria. | Short - Medium | Open | 2019/20 - 2024/25 |
| 46 | Traffic Management | Intersection - Forest Road South and Buckingham Street | Regional Roads Victoria is investigating to install traffic lights at Forest Road South and Buckingham Street to improve access. | Regional Roads Victoria | Regional Roads Victoria have not commenced any detail designs or assessments of this intersection. To install traffic signals, it may cost up to \$2 million. | Medium - Long | Open | 2024/25 - 2029/30 |
| 47 | Traffic Management | Intersection - Curlettes Road & Flinders Avenue | Request to review the location of 'STOP' sign post – it is set too far back. | City of Greater Geelong | To review and rectify the sign location as required. | Short | Open | 2019/20 - 2020/21 |
| 48 | Traffic Management | Intersection - Heales Road & Broderick Road | Request to improve dangerous intersection, due to see-through effect. | City of Greater Geelong | Traffic Signal works have commenced at this intersection to improve safety. | Short | Closed | |
| 49 | Traffic Management | Intersection of Mill Road & Windermere Road | Request to improve intersection for turning vehicles. | City of Greater Geelong | Additional hazard markers will be installed to stop vehicles driving between the hazard markers when approaching Mill Road. | Short | Open | 2019/20 - 2020/21 |

| No. | Mode | Location | Issues | Responsible Authorities | Description | Timing | Status | Year |
|-----|--------------------|--|---|--------------------------------|---|--------|--------|-------------------|
| 50 | Traffic Management | Intersection Old Melbourne Road & McIntyre Road | Request to improve this unsafe intersection for motorists. | City of Greater Geelong | There are no immediate plans to do any works. | Short | Closed | |
| 51 | Traffic Management | Intersection - You Yangs Road & Little River Ripley Road | Request to review unsafe intersection for motorists. | City of Greater Geelong | To upgrade faded line marking in Little River Ripley Road at the intersection and re-locate existing advance warning signs to prominent locations in You Yangs Road. These changes would improve safety and reduce the existing see through effect. to monitor this intersection. | Short | Open | 2019/20 - 2020/21 |
| 52 | Traffic Management | Intersection Avalon Road & Watts Street | Request to review and improve safety at this intersection due to high speeds of vehicles from Princes Highway Off Ramp or Service Road. | Regional Roads Victoria | Reduction of speed limits near the Avalon Rd/Watts St intersection are underway | Short | Open | 2019/20 - 2020/21 |
| 53 | Traffic Management | Intersection Bacchus March and Geelong Road | Request to review traffic signal timing to allow longer green arrow time. | Regional Roads Victoria | Referred to Regional Roads Victoria to review and rectify as appropriate. | Short | Open | 2021/22 - 2024/25 |
| 54 | Traffic Management | Intersection Curlett's Road & Flinders Avenue. | Request to review and install new roundabout at this intersection. | City of Greater Geelong | New request to be reviewed | Short | Open | 2021/22 - 2024/25 |

| No. | Mode | Location | Issues | Responsible Authorities | Description | Timing | Status | Year |
|---|----------------------|--|---|-------------------------|--|---------------|--------|-------------------|
| 55 | Traffic Management | Intersection Little River Ripley & Kirks Bridge Road | Request to investigate and install splitter islands and to improve the existing pavement surface due to 'hooning' activities. | City of Greater Geelong | Completed constructing a splitter Island to improve the safety at this intersection. New line marking and signage have also been installed. (installed May 2019) | Short | Closed | |
| 56 | Traffic Management | Intersection of Patullos Road, Elcho Road, and O'Halloran's Road | Request to review safety and accessibility at this intersection due to on-going residential development work. | City of Greater Geelong | To investigate this further with Lara West (Manzeene Village Developments). | Medium - Long | Open | 2024/25 - 2029/30 |
| 57 | Traffic Management | Intersection Windermere Road & Forest Road North | Request to review and remove tree branches blocking sight lines for motorists. | City of Greater Geelong | Issued instructions to prune branches to improve sight lines. New advance warning signs and speed limit signs will be programmed to improve safety. City to monitor. | Short | Open | 2019/20 - 2020/21 |
| 7. PEDESTRIAN AND CYCLISTS SAFELY UPGRADES | | | | | | | | |
| 58 | Cycling / Pedestrian | Canterbury Road / Canterbury Road East | Request to consider installing a dedicated bike lane or pedestrian and cyclist infrastructure or a 'Shared path' connection, linking Grand Lakes (via Elcho drain line) to Rennie Street. | City of Greater Geelong | To review as per existing Principal Bicycle Network (PBN). Path being included and constructed with the delivery of the Elcho drain line. | Medium | Open | 2021/22 - 2024/25 |
| 59 | Cycling | School Access | Request information on PBN bike plans to provide access | City of Greater Geelong | To investigate as per Principal Bicycle Network (PBN). | Short | Open | 2019/20 - 2020/21 |

| No. | Mode | Location | Issues | Responsible Authorities | Description | Timing | Status | Year |
|-----|---------|-------------------|--|--------------------------------|---|----------------|--------|-------------------|
| | | | to schools and Windermere Road accessibility. | | | | | |
| 60 | Cycling | Flinders Avenue | Request to widen Flinders Avenue from Windermere Road to Branch Road. | City of Greater Geelong | Currently being investigated, with the first stage being considered alongside Serendip Sanctuary (with Parks Victoria). | Short - Medium | Open | 2019/20 - 2024/25 |
| 61 | Cycling | Toynes Road | Request to install a bicycle path connection to 'You Yangs Reserve' via Toynes Road. | City of Greater Geelong | Needs further investigation. | Short - Medium | Open | 2019/20 - 2024/25 |
| 62 | Cycling | Waverley Road | Request to install bicycle lanes. | City of Greater Geelong | To install bicycle lanes as part of 'Lara Sports Precinct Master Plan'. These will be off-road paths. | Short - Medium | Open | 2019/20 - 2024/25 |
| 63 | Cycling | You Yangs Reserve | Request to install 'Bicycle Directional Signage' within Lara to key activity centres / You Yangs Reserve / Train Stations and Townships. | City of Greater Geelong | These requests will be carried out as per PBN projects. | Short - Medium | Open | 2019/20 - 2024/25 |
| 64 | Cycling | Flinders Avenue | 100km/hr speed zone in Flinders Avenue is unsafe for cyclist. | City of Greater Geelong | Pending the investigations and design into appropriate cycling facilities, a speed limit reduction may be required. | Medium | Open | 2021/22 - 2024/25 |

| No. | Mode | Location | Issues | Responsible Authorities | Description | Timing | Status | Year |
|-----|-------------|-------------------|--|--------------------------------|--|--------|--------|-------------------|
| 65 | Cycling | Forest Road South | Request to widen Forest Road South to have footpaths and bike lanes (off road) and have dual lanes. | Regional Roads Victoria | Regional Roads Victoria has developed a project scope to complete shoulder sealing works between Canterbury Road and the Wool Stores to connect bike lanes and will continue to be considered in road upgrade programs. The preference is to provide off road path connections, with the strategic cycling corridors. | Medium | Open | 2021/22 - 2024/25 |
| 66 | Cycling | Station Lake Road | Requests to provide wider cycle and pedestrian path and links to existing and future proposed paths. | City of Greater Geelong | There are bicycle paths in Station Lake Road. The City will also be considering connections to the newly constructed Hovells Creek Path to the service lanes along Station Lake Road. | Medium | Open | 2021/22 - 2024/25 |
| 67 | Cycling | Forest Road North | Request to review and install bicycle lanes/paths to You Yangs Reserve along Forest Road North. Also improve the road between Thomas Road & Patullos Road. | City of Greater Geelong | The need for bike paths in Forest Road North would be investigated in conjunction with Flinders Avenue. | Long | Open | 2024/25 - 2029/30 |
| 68 | Pedestrians | Forest Road South | Request to convert school crossing into a signalised pedestrian crossing. | Regional Roads Victoria | Regional Roads Victoria states that following the installation of the electronic school speed limit signs, requests for traffic signals at the crossing have been made. as undertaken a detailed design and estimate of the pedestrian crossing and is suitable for considering for funding (not funded). Likely cost of \$0.35-\$0.4 Million. | Medium | Open | 2019/20 - 2024/25 |

| No. | Mode | Location | Issues | Responsible Authorities | Description | Timing | Status | Year |
|--------------------------|-------------------|--|---|--------------------------------|--|----------------|--------|-------------------|
| 69 | Pedestrians | Intersection - Forest Road South & Bank Street | Request to provide safe pedestrian crossing infrastructure near Bank Street and Police Station. | Regional Roads Victoria | Regional Roads Victoria to undertake feasibility assessment of new crossing point in Forest Road South. | Short | Open | 2019/20 - 2020/21 |
| 70 | Pedestrians | Intersection - Walkers Road and Curlettes Road. Roundabout | Request to investigate and improve safety to pedestrians at the roundabout. | City of Greater Geelong | To install a pram ramp at this intersection to promote safe pedestrian crossing. | Short - medium | Open | 2019/20 - 2024/25 |
| 71 | Pedestrians | Rennie Street | Request to improve Hovells Creek shared path near Rennie St. | City of Greater Geelong | This requires further investigation and funding to implement rectification. | Short - Medium | Open | 2019/20 - 2024/25 |
| 72 | Pedestrians | Walkers Road | Requests to address pedestrian crossing needs. | City of Greater Geelong | To install a Wombat crossing near Library in Walkers Road. Referred to Capital Works Program – 5+ financial years. | Medium | Open | 2021/22 - 2024/25 |
| 73 | Pedestrian Bridge | Lara Pedestrian Bridge -Lara Train Station | Review the need to have a pedestrian bridge connecting Lara Railway Station and Mill Road. | Department of Transport | The Geelong to Melbourne rail corridor is being reviewed as part of the Western Rail Plan. This plan will consider Local and State Planning Policies, including the Lara Structure Plan which has identified a need for this connection. | Long | Open | 2024/25 - 2029/30 |
| 8. FOOTPATH WORKS | | | | | | | | |
| 74 | Footpaths | Altair Street | Provide missing footpaths. | City of Greater Geelong | Altair Street listed in the 'Footpath Customer Commitments Register'. This will be | Long | Open | 2024/25 - 2029/30 |

| No. | Mode | Location | Issues | Responsible Authorities | Description | Timing | Status | Year |
|-----|-----------|-------------------|---|--------------------------------|--|--------|--------|-------------------|
| | | | | | considered as a 'Special Rates & Charges' (SRC) Scheme. | | | |
| 75 | Footpaths | Antares Avenue | Provide missing footpaths to improve safety to school children. | City of Greater Geelong | Antares Avenue listed in the 'Footpath Customer Commitments Register'. This will be considered as a 'Special Rates & Charges' (SRC) Scheme. | Long | Open | 2024/25 - 2029/30 |
| 76 | Footpaths | Buckingham Street | Request to complete missing footpath between Windsor & Francis street. | City of Greater Geelong | Buckingham Street listed in the 'Footpath Customer Commitments Register'. This will be considered as a 'Special Rates & Charges' (SRC) Scheme. | Short | Open | 2019/20 - 2020/21 |
| 77 | Footpaths | Canopus Cres | Request new footpath connections | City of Greater Geelong | New request to be reviewed | Long | Open | |
| 78 | Footpaths | Curlettes Road | Requests to improve existing 'old bitumen footpath', on the east side (north of Flinders Avenue). | City of Greater Geelong | New request to be reviewed | Long | Open | |
| 79 | Footpaths | Flinders Avenue | Request to improve footpath and guttering along Flinders Avenue. | City of Greater Geelong | Flinders Avenue listed in the 'Footpath Customer Commitments Register'. This will be considered as a 'Special Rates & Charges' (SRC) Scheme. | Long | Open | 2024/25 - 2029/30 |
| 80 | Footpaths | Forest Road North | Request to review and install footpath to You Yangs Reserve from Thomas Road. | City of Greater Geelong | Investigated and due to its rural character, this was not listed this in the 'Footpath Customer Commitments Register'. | Long | Closed | |

| No. | Mode | Location | Issues | Responsible Authorities | Description | Timing | Status | Year |
|-----|-----------|---|---|--------------------------------|---|---------------|--------|-------------------|
| 81 | Footpaths | Forest Road North | Request to provide a footpath connection from Thomas Road to the Creek. | City of Greater Geelong | Investigated and listed in the 'Footpath Customer Commitments Register'. This will be considered as a 'Special Rates & Charges' (SRC) Scheme. | Short | Open | 2019/20 - 2020/21 |
| 82 | Footpaths | Intersection of Curletts Road & Flinders Avenue | Requests to improve safety at this intersection for pedestrians by installing safety fencing. | City of Greater Geelong | New request to be reviewed | Medium | Open | |
| 83 | Footpaths | Mill Road | Request to complete missing footpaths. | City of Greater Geelong | the west side of Mill Road (between Alkara Avenue & Lewton Road) included into the 'Footpath Customer Commitments Register'. This will be considered as a 'Special Rates & Charges' (SRC) Scheme. | Long | Open | 2024/25 - 2029/30 |
| 84 | Footpaths | Patullos Road | Request to complete missing footpaths. | City of Greater Geelong | Patullos Road Listed in the 'Footpath Customer Commitments Register'. This will be considered as a 'Special Rates & Charges' (SRC) Scheme. | Medium - Long | Open | 2024/25 - 2029/30 |
| 85 | Footpaths | Perkins Road | Request to complete missing footpaths. | City of Greater Geelong | Investigated and due to its rural character, this was not listed this in the 'Footpath Customer Commitments Register'. | Long | Closed | |
| 86 | Footpaths | Rigel Road | Request new footpath connections | City of Greater Geelong | New request to be reviewed | Long | Open | |

| No. | Mode | Location | Issues | Responsible Authorities | Description | Timing | Status | Year |
|-------------------------------------|---------------------------|-----------------------------------|--|--------------------------------|--|---------------|--------|-------------------|
| 87 | Footpaths | Station Lake Road | Requests to complete missing footpaths between Forest Road South & Howells creek Bridge. | City of Greater Geelong | Station Lake Road listed in the 'Footpath Customer Commitments Register'. This will be considered as a 'Special Rates & Charges' (SRC) Scheme. | Medium - Long | Open | 2024/25 - 2029/30 |
| 88 | Footpaths | Waverly Road | Request new footpath connections | City of Greater Geelong | New request to be reviewed | Medium - Long | Open | |
| 9. LIGHTING WORKS | | | | | | | | |
| 89 | Lighting | Forest Road North | Improve street lighting along Forest Road North from 6 way. | City of Greater Geelong | Inspected this site and all burnt out lights will be replaced as per City of Greater Geelong lighting policy. | Short | Open | 2019/20 - 2020/21 |
| 90 | Lighting | McClelland Avenue & Clover Street | Request to improve street lighting at this intersection. | City of Greater Geelong | New requests to be reviewed | Short | Open | |
| 91 | Lighting | Station Lake Road | Request to improve street lighting on Station Lake Road between 6 Way & Hume Bridge. | City of Greater Geelong | New requests to be reviewed | Short | Open | 2019/20 - 2020/21 |
| 10. TRAFFIC MANAGEMENT WORKS | | | | | | | | |
| 92 | School pick up / drop off | Lara Lake School | Request to review 'Lara Lake School' pick up/drop off as it blocks the traffic in the morning and afternoon. | City of Greater Geelong | Contacted the school with parking solutions. | Short | Open | 2019/20 - 2020/21 |

| No. | Mode | Location | Issues | Responsible Authorities | Description | Timing | Status | Year |
|-----|--------------------|--------------------------------------|--|--------------------------------|---|--------|--------|-------------------|
| | | | | | | | | |
| 93 | Traffic Congestion | Railway Crossing & McClelland Avenue | Request to review existing single lane at railway crossing and if possible, restore two lanes. | City of Greater Geelong | Reduced this to a single lane to improve pedestrian safety at the railway crossing. Insufficient width to accommodate two safe travelling lanes. No further remedial action will be taken at this stage. This may be further reviewed with any works carried out by VicTrack to upgrade the crossing surface and pedestrian facilities. | Short | Closed | |
| 94 | Traffic Management | Road connection to Freeway | Request for another 'Road connection to the freeway' to improve congestion and accessibility. | Department of Transport | New request to be reviewed | | Open | |
| 95 | Traffic Management | Alfred Street | Investigate Fisher Street & Alfred Street to improve traffic safety and accessibility. | City of Greater Geelong | Installed warning signs to improve safety to motorists. | Short | Closed | |
| 96 | Traffic Management | Bacchus Marsh Road | Request to install dual lanes and overtaking lanes in Bacchus Marsh Road. | Regional Roads Victoria | Regional Roads Victoria - To improve capacity in Bacchus Marsh Road, Regional Roads Victoria states that the initial assessment on timing of duplication and upgrade is medium term. Future road duplication will be based on future growth from North West Geelong Growth Areas (NWGGA) developments. There are a number of 'triggers' that are considered when prioritising major upgrades, including the | Medium | Open | 2021/22 - 2024/25 |

| No. | Mode | Location | Issues | Responsible Authorities | Description | Timing | Status | Year |
|-----|--------------------|--------------------|---|--------------------------------|--|--------|--------|-------------------|
| | | | | | safety performance, delay and future growth expectations. Regional Roads Victoria continues to monitor the operation of the road. | | | |
| 97 | Traffic Management | Bacchus Marsh Road | Request to review and improve traffic signal timing at the intersection of Geelong Road and Bacchus marsh Road. | Regional Roads Victoria | Regional Roads Victoria to review and make the necessary changes. | Short | Open | 2019/20 - 2020/21 |
| 98 | Traffic Management | Bank Street | Request to investigate and improve vehicle access into Forest Road South from Banks Street. Also remove the existing concrete channelling in Forest Road South to improve driver comfort. | City of Greater Geelong | These conditions are similar to any other side street located near an arterial roadway. The concrete channel is for drainage control as per other streets. No further action will be taken. | Short | Closed | |
| 99 | Traffic Management | Broderick Road | Request to re-consider 'On & Off Ramp' at Broderick Road and Geelong Ring Road. | Regional Roads Victoria | Regional Roads Victoria states that a re-assessment of the feasibility of access ramps at Broderick Road are now required. An investigation is also needed to identify ways to improve the current route, and links to the Geelong Ring Road to the Port of Geelong. | Medium | Open | 2021/22 - 2024/25 |
| 100 | Traffic Management | Buckingham Street | Request to investigate and improve vehicle access into Forest Road South. Also review the driveability across the concrete channelling across | City of Greater Geelong | The concrete channel if for drainage control as per other streets. In regard to access, the conditions are similar to any other side street located near an arterial roadway. Additional Local Area Traffic Management (LATM) works programmed 5+ financial years. | Medium | Open | 2021/22 - 2024/25 |

| No. | Mode | Location | Issues | Responsible Authorities | Description | Timing | Status | Year |
|-----|--------------------|-----------------------|--|--------------------------------|--|----------------|--------|-------------------|
| | | | Buckingham Street. Review on road parking and through traffic conflicts. | | | | | |
| 101 | Traffic Management | Coles Car Park Access | Request to review vehicle movements between Coles & Woolworths across Waverley Road. | City of Greater Geelong | City to monitor. | Short | Open | 2019/20 - 2020/21 |
| 102 | Traffic Management | Forest Road South | Review the future use of the 'disused train tracks' across Forest Road South. | City of Greater Geelong | Discussed this with Regional Roads Victoria. This would be kept for future Heales Road Industrial precinct users. | Long | Closed | |
| 103 | Traffic Management | Gibbons Road | Request to close road due to dust and safety issues. Also review road to be sealed or upgraded. | City of Greater Geelong | Road closed to improve amenity and safety to residents. City officers recommend that Gibbons Road to remain closed permanently. City completed installing 'No Through Road' signs. | Short - Medium | Open | 2019/20 - 2024/25 |
| 104 | Traffic Management | Heales Road | Request to review the long term strategic need to link Heales Road to O'Halloran's Road. | City of Greater Geelong | To review the long term, need for an additional north – south connection. Need further investigation. | Long | Open | 2024/25 - 2029/30 |
| 105 | Traffic Management | Karltan Close | Request Regional Roads Victoria to investigate ways to improve intersection and vehicle accessibility. | City of Greater Geelong | To discuss appropriate solutions with Regional Roads Victoria. | Medium | Open | 2021/22 - 2024/25 |

| No. | Mode | Location | Issues | Responsible Authorities | Description | Timing | Status | Year |
|-----|--------------------|-----------------------------|---|--------------------------------|---|--------|--------|-------------------|
| 106 | Traffic Management | Kees Road | Request to realign Kees Road to Forest Road North (before the roundabout). | City of Greater Geelong | Regional Roads Victoria do not support Kees Road realignment. Regional Roads Victoria carried out an assessment (including traffic modelling) and found out that limited width in Forest Road north for turning lanes at the new intersection to Kees Road, more delays due to required extra green time for Forest Road North and the increase in total delay at the 6-way intersection. | Long | Closed | |
| 107 | Traffic Management | Kees Road off-road car park | Request to re-design off street car park to improve pedestrian safety and vehicle circulation. | City of Greater Geelong | To survey and prepare concept plans to improve parking and pedestrian safety. | Medium | Open | 2021/22 - 2024/25 |
| 108 | Traffic Management | Lara Community Centre | Request to review the location of the bus stop outside Lara community centre. States that this obstructs 'sight view' of cars pulling out of the community centre car park. | City of Greater Geelong | To work with the Community Centre to resolve this issue. | Short | Open | 2019/20 - 2020/21 |
| 109 | Traffic Management | Lara - directional signage | Request the need for directional signage leading people from Avalon Airport to tourism sites, Lara, Little River townships, Serendib & You Yangs Reserve. | City of Greater Geelong | To discuss with key stakeholders to identify the key locations for these signs and funding sources. | Medium | Open | 2021/22 - 2024/25 |

| No. | Mode | Location | Issues | Responsible Authorities | Description | Timing | Status | Year |
|-----|--------------------|---------------------------------|--|--------------------------------|--|--------|--------|-------------------|
| 110 | Traffic Management | Manzeene Avenue | Request to review and improve 'Left & Right Turn lanes' from Patullos Road. | City of Greater Geelong | Investigated the existing Left & Right Turn lanes from Patullos Road. No safety issues identified. | Short | Closed | |
| 111 | Traffic Management | McClelland Avenue | Requests to improve property access from McClelland Avenue. Requests the need for a Service Road for properties located close to Avalon Road. | City of Greater Geelong | To investigate property access. Works to seal a shoulder for those properties between Austin Street and Avalon Road will be considered with the works occurring for McClelland Avenue, subject to funding. | Short | Open | 2019/20 - 2020/21 |
| 112 | Traffic Management | McClelland Avenue | Requests more police enforcement. | City of Greater Geelong | This has a posted speed limit of 80km/average speed of vehicles was 73.2 km/h. (29 Mar 2018), between Austin St & Avalon Rd. CoGG to monitor. | Short | Open | 2019/20 - 2020/21 |
| 113 | Traffic Management | McClelland Avenue | Requests to install 'Left Turn & Right Turn Lanes' in McClelland Avenue to provide safety to turning facilities for vehicles. | City of Greater Geelong | Constructing three turn lanes in McClelland Avenue (Locations: Clover Street, Gum Drive, Austin Street & Abbey Drive) in 2019/20. | Short | Closed | |
| 114 | Traffic Management | McClelland Avenue & Abbey Drive | Request to improve intersection treatment to provide safety for turning traffic. | City of Greater Geelong | New requests to be reviewed | Short | Open | 2019/20 - 2020/21 |

| No. | Mode | Location | Issues | Responsible Authorities | Description | Timing | Status | Year |
|-----|--------------------|---------------|---|--------------------------------|---|----------|--------|-------------------|
| 115 | Traffic Management | McIntyre Road | Request to review existing (in-correct) directional signage in Bacchus Marsh Roads which sends motorists via Lara. | Regional Roads Victoria | Signage has been completed by Regional Roads Victoria. | Complete | Closed | |
| 116 | Traffic Management | Other | Requests to have more 'entry/exits' from Rennie / Canterbury Road to the Freeway. | Regional Roads Victoria | Further action will be taken after the completion and acceptance of this plan. | Long | Open | 2024/25 - 2029/30 |
| 117 | Traffic Management | Other | Request to investigate the 'caution lights on the corner (behind Coles truck bay), due to cars travelling fast around the corner and other vehicles have to pull up quickly due to congestion. The sight lines is an issue. This happens mainly at school times and at train times. | City of Greater Geelong | To investigate this to identify any safety issues. | Short | Open | 2019/20 - 2020/21 |
| 118 | Traffic Management | Patullos Road | Request to investigate car parking issues in front of the shops. Many cars doing U Turn outside Six Ways. | City of Greater Geelong | To discuss these issues with key stakeholders and Regional Roads Victoria as part of the 6-way designs. | Short | Open | 2019/20 - 2020/21 |

| No. | Mode | Location | Issues | Responsible Authorities | Description | Timing | Status | Year |
|-----|--------------------|------------------|---|--|---|--------|--------|-------------------|
| 119 | Traffic Management | Patullos Road | Request to provide a 'Left Turn lane' into Bath Street from Patullos Road. | City of Greater Geelong | There are Right Turn lanes from Patullos Road into Bath Street. Introducing a new Left Turn from Patullos Road into Bath Road requires major culvert upgrade works to provide better turning radius. Need further investigation. | Medium | Open | 2021/22 - 2024/25 |
| 120 | Traffic Management | Peak School Road | Request to review the need to upgrade Peak School Road due to Lara Prison Precinct expansion and as a possible East-West connection. | City of Greater Geelong | The Department of Transport identified new truck route revisions would identify the purpose of Peak School Road. To monitor and collect traffic data. | Long | Open | 2024/25 - 2029/30 |
| 121 | Traffic Management | Peak School Road | Request to review and install 'Stop' signs at Mill Road (corner of McIntyre Road) to stop cars speeding through 'Give Way' sign. Also review and change 'directional signage' installed by Regional Roads Victoria in Bacchus Marsh Road. | City of Greater Geelong & Regional Roads Victoria | To review existing 'Give Way' signs in Peak School Road and if required change them to 'Stop' signs as per guidelines. The corresponding intersections are: Forest Road North, Flinders Avenue & Mill Road. to discuss 'Directional Signs' with Regional Roads Victoria and request Regional Roads Victoria to review and change as required. | Short | Open | 2019/20 - 2020/21 |
| 122 | Traffic Management | Peak Street | Accessing Station Lake Road from Peak Street during peak times is an issue. Request to review the provision for 'Right Turn lanes' in Station Lake Road. | City of Greater Geelong | There are gaps in traffic that allows vehicles to merge into Station Lake Road. No action is proposed at this stage. to monitor. | Medium | Open | 2021/22 - 2024/25 |

| No. | Mode | Location | Issues | Responsible Authorities | Description | Timing | Status | Year |
|-----|--------------------|---|---|--------------------------------|--|----------------|--------|-------------------|
| 123 | Traffic Management | Plains Road | Request to maintain 5T load limit. | City of Greater Geelong | No changes suggested. This will be investigated further as part of the implementation of the truck route revisions. | Medium | Open | 2021/22 - 2024/25 |
| 124 | Traffic Management | Roundabout - Rennie Rd & McClelland Ave | Request to review school time 'drop off & pick' for safety concerns. | City of Greater Geelong | Installed cameras to identify safety issues during school drop off & pick up times to review this further. | Short - Medium | Open | 2019/20 - 2024/25 |
| 125 | Traffic Management | Sandy Creek Road | Request for Vic Police presence to stop 'Hoon behaviour'. | City of Greater Geelong | Vic Police is aware of 'hoon' behaviour. City and Vic Police to monitor. | Short | Open | 2019/20 - 2020/21 |
| 126 | Traffic Management | Sandy Creek Road | Request to improve driver visibility at the intersection of Branch Road and Forest Road North. | City of Greater Geelong | To investigate this intersection in order to improve safety by installing curve warning signs, upgrade existing drainage infrastructure and improve line marking. This would be considered as a new budget item. | Medium | Open | 2021/22 - 2024/25 |
| 127 | Traffic Management | Smeaton Close | Request to improve parking facilities. | City of Greater Geelong | City investigated - no parking issues. | Short | Closed | |
| 128 | Traffic Management | St Laurence Park Retirement Village | Request to review and improve this intersection at 'St Laurence Park Retirement Village' and Station lake Road. | City of Greater Geelong | City to discuss this with Regional Roads Victoria, to identify the intersection treatment and to identify if it meets the warrants for a roundabout. | Short | Open | 2019/20 - 2020/21 |

| No. | Mode | Location | Issues | Responsible Authorities | Description | Timing | Status | Year |
|---------------------------|--------------------|--|--|--------------------------------|---|---------------|--------|-------------------|
| 129 | Traffic Management | Station Lake Road | Request to review and install 'left turn and right turn turning lanes' in Station Lake Road. This is mainly to reduce damage to shoulders. | City of Greater Geelong | City to investigate these intersections in Station Lake Road to see if it meets the warrants to install turning lanes. If warrants are met, then City will proceed with the work. | Medium - Long | Open | 2024/25 - 2029/30 |
| 130 | Traffic Management | You Yangs Road | Request to install 'directional signage for cyclist' from Werribee and Little River to You Yangs Reserve and Melbourne Road. | City of Greater Geelong | City to investigate this further as part of the Principle Bicycle Network (PBN) | Medium | Open | 2021/22 - 2024/25 |
| 11. DRAINAGE WORKS | | | | | | | | |
| 131 | Drainage | Intersection - Forest Road North & Windermere Road | Request to review and improve existing poor drainage issues at the roundabout | City of Greater Geelong | City to review new request. | Short | Open | 2019/20 - 2020/21 |
| 132 | Drainage | Sandy Creek Road | Request to install a new 'culvert' at the low point in Sandy Creek Road to reduce water damage to road. | City of Greater Geelong | Programmed to be installed as per 'Drainage Works Program'. | Medium | Open | 2021/22 - 2024/25 |
| 133 | Drainage | Walkers Road | Request to improve drainage issues (driveway access and particular under trees). | City of Greater Geelong | City to carry out improvement works from Mill Road to Waverley Road include roundabout at east end and finish at rail crossing. | Medium | Open | 2021/22 - 2024/25 |

| No. | Mode | Location | Issues | Responsible Authorities | Description | Timing | Status | Year |
|-----------------------------------|------------------|--------------------|--|--------------------------------|--|----------------|--------|-------------------|
| 134 | Drainage | Hicks Road | Request to improve drainage along Hicks Road, with a spoon drain. | City of Greater Geelong | New request to be reviewed | | Open | |
| 12. ROAD MAINTENANCE ITEMS | | | | | | | | |
| 135 | Road Maintenance | Avalon Road | Request to investigate and repair the 'dip' in Avalon Road. It's located on the highway in the direction of 'Melbourne bound'. | Regional Roads Victoria | Regional Roads Victoria will determine appropriateness of warning signage | Short | Open | 2019/20 - 2020/21 |
| 136 | Road Maintenance | Bacchus Marsh Road | Request to investigate and repair road surface. | Regional Roads Victoria | Regional Roads Victoria to inspect Bacchus Marsh Road and prioritise works according to safety and risk. | On-Going | Open | |
| 137 | Road Maintenance | Forest Road North | Improve road surface between Thomas Road & Patullos Road due to many potholes and edge breaks. | City of Greater Geelong | Raised work orders for edge break and pothole repairs. | Short | Open | 2019/20 - 2020/21 |
| 138 | Road Maintenance | Forest Road South | Request to resurface Forest Road South from Six ways to Heales Road. Improve road surface near both school crossings. | Regional Roads Victoria | To repair Forest Road South, Regional Roads Victoria has identified repairs between Station Lake Road & Canterbury Road and repairs between Canterbury Road and Heales Road, to be prioritised in road upgrade programs. | Short - Medium | Open | 2019/20 - 2024/25 |

| No. | Mode | Location | Issues | Responsible Authorities | Description | Timing | Status | Year |
|-----|------------------|---|---|--------------------------------|---|----------------|--------|-------------------|
| 139 | Road Maintenance | Intersection McClelland Ave & Avalon Road | Request to improve faded line marking at the intersection. | City of Greater Geelong | Resurfaced McClelland Avenue between Clover Street to Avalon Road under the spray seal program. (Work carried out in May 2019) | Short | Closed | |
| 140 | Road Maintenance | McClelland Avenue & Clover Street | Request to improve line marking at this intersection. | City of Greater Geelong | New requests to be reviewed | Short | Open | |
| 141 | Road Maintenance | Mill Road | Request to repair damaged road shoulders. | City of Greater Geelong | This will be referred to maintenance unit. | Medium | Open | 2021/22 - 2024/25 |
| 142 | Road Maintenance | Minns Road | Minns Road in Little River, need road maintenance and road upgrading. | City of Greater Geelong | This was referred to maintenance unit. Currently being re-sheeted, however this has been placed on hold until the weather has improved. | Short | Open | 2019/20 - 2020/21 |
| 143 | Road Maintenance | O'Halloran's Road | Review and repair damage road surface within the local area. | City of Greater Geelong | This was referred to maintenance unit. | Short - Medium | Open | 2019/20 - 2024/25 |
| 144 | Road Maintenance | Railway Crossing & McClelland Avenue | Request to repair road surface at the railway crossing section for pedestrians. | Vic Rail | Recent observations showed that Vic Rail has repaired this section. Requires further attention. | Short | Open | |
| 145 | Road Maintenance | Sandy Creek Road | Request to repair damaged road surface (pot holes) and shoulders. | City of Greater Geelong | This was referred to maintenance unit. | Medium | Open | 2021/22 - 2024/25 |

| No. | Mode | Location | Issues | Responsible Authorities | Description | Timing | Status | Year |
|-----|------------------|--------------------------|--|--------------------------------|---|----------------|--------|-------------------|
| 146 | Road Maintenance | Thomas Road | Request to review and improve road maintenance. | City of Greater Geelong | This was referred to maintenance unit. | Medium | Open | 2021/22 - 2024/25 |
| 147 | Road Maintenance | Bath Street | Request to investigate road surface damage due to the new bus route (both ways) | City of Greater Geelong | The road surface is in good condition. No further action required. | Short | Closed | |
| 148 | Road Maintenance | Farras Road | Request to repair damaged road surface between Branch Road and You Yangs Road. | City of Greater Geelong | Maintenance unit issued a 'Work Order' to rectify 'edge breaks' in Farras Road. | Short - Medium | Open | 2019/20 - 2024/25 |
| 149 | Road Maintenance | Flinders Avenue | This road needs a complete resurface due to pot holes. | City of Greater Geelong | Maintenance unit issued Work Orders to repair edge breaks and potholes. | Short | Open | 2019/20 - 2020/21 |
| 150 | Road Maintenance | Little River Ripley Road | Request to repair road surface between Kirks Bridge road and You Yangs Road. | City of Greater Geelong | Maintenance unit - Work Order issued for an edge break which will be addressed by the end June. | Short | Open | 2019/20 - 2020/21 |
| 151 | Road Maintenance | Lara | Requests to improve road surface conditions in – Bath Street, Buckingham Street to Forest Road, Flinders Avenue, Kees Road, McClelland Avenue, Lewton Road, Avalon Road and Station Lake Road. | City of Greater Geelong | This was referred to maintenance unit. | Medium | Open | 2021/22 - 2024/25 |

| No. | Mode | Location | Issues | Responsible Authorities | Description | Timing | Status | Year |
|-------------------------------|--------------|--|--|--------------------------------|---|----------------|--------|-------------------------|
| 13. ROAD UPGRADE WORKS | | | | | | | | |
| 152 | Road Upgrade | Branch Road (Farras Road – Flinders Avenue) | Request to improve road surface condition and drainage issues. | City of Greater Geelong | This request is included in the 'Road Surfacing Reseal Program'. Work includes 'two coats of spray seal (10mm / 7mm). | Short | Open | 2019-2020 (~ \$138,000) |
| 153 | Road Upgrade | Constantine Drive | Request to seal this road. | City of Greater Geelong | Constantine Drive would be considered as a 'Special Rates & Charges' (SRC) Scheme. | Long | Open | 2024/25 - 2029/30 |
| 154 | Road Upgrade | Gibbons Road (Bacchus Marsh Road to Gravel Road –Sealed section) | Review and improve road condition from Bacchus Marsh Road to Gravel section. | City of Greater Geelong | Included in the 'Road Surfacing Reseal Program' to complete Two Coats Spray Seal 10mm / 7mm. | Short | Open | 2019-2020 (~ \$16,000) |
| 155 | Road Upgrade | Gibbons Road (Soccer Club Entry) | Improve condition of road surface near the football club entry. | City of Greater Geelong | This is included in the 'Road Surfacing Asphalt Program' to complete patching & 35mm Overlay –Intersection works. | Short | Open | 2019-2020 (~\$11,000) |
| 156 | Road Upgrade | Glenoe Drive | Residents in Glenore Drive requested CoGG to review and seal the road to improve dust and corrugations issues. | City of Greater Geelong | Glenoe Drive would be investigated and implemented under a 'Special Rates & Charges Scheme' (SRC). | Long | Open | 2024/25 - 2029/30 |
| 157 | Road Upgrade | Kees Road | Upgrade gravel section (narrow bitumen) up to Windermere Road as per | City of Greater Geelong | This was handed over to City Sub-Divisions unit as per Lara West (Manzeene Village Developments) to review. City of Greater Geelong Maintenance - Work Order raised for | Short - Medium | Open | 2019/20 - 2024/25 |

| No. | Mode | Location | Issues | Responsible Authorities | Description | Timing | Status | Year |
|-----|--------------|-------------------|--|--------------------------------|--|--------|--------|------------------------|
| | | | 'Lara West Development' plans. | | Potholes and Edge breaks to be rectified. These will be addressed by the end June. | | | |
| 158 | Road Upgrade | Lewton Road | Request to review and seal Lewton Road to manage dust and road maintenance issues. | City of Greater Geelong | Lewton Road would be investigated and implemented under a 'Special Rates & Charges Scheme' (SRC). | Long | Open | 2024/25 - 2029/30 |
| 159 | Road Upgrade | McIntyre Road | Request to review and upgrade road surface. | City of Greater Geelong | To commence remedial works. | Short | Open | 2019/20 - 2020/21 |
| 160 | Road Upgrade | McIntyre Road | Review and upgrade road surface between the rail lines in McIntyre Road at the Railway Crossing. | City of Greater Geelong | Vic Rail has repaired this section. | Medium | Closed | |
| 161 | Road Upgrade | Perkins Road | Enquiry regarding the on-going works and the delay in completing stage one works. | City of Greater Geelong | Stage one works are completed. The stage two works are included in the 'Federal Roads Program – Stage two'. The stage two sealing works (Old Melbourne Road – McIntyre Road) to commence soon. | Short | Open | 2019-2020 (~\$283,500) |
| 162 | Road Upgrade | Station Lake Road | Request to plan upgrading Station Lake Road to have two carriageways in 10 years. | City of Greater Geelong | New request to be reviewed | Short | Closed | |
| 163 | Road Upgrade | Thomas Road | Request to seal Thomas Road. | City of Greater Geelong | Sealing of Thomas Road would be investigated and constructed under a 'Special Rates & Charges Scheme' (SRC). | Medium | Open | 2021/22 - 2024/25 |

| No. | Mode | Location | Issues | Responsible Authorities | Description | Timing | Status | Year |
|------------------------------|------------------|--|---|--------------------------------|---|--------|--------|-------------------------|
| 164 | Road Upgrade | Watts Street /Stephenson Street | Requests to seal these roads up to Rennie Street. | City of Greater Geelong | Developed concept designs. Construction is subject to funding availability. | Medium | Open | 2021/22 - 2024/25 |
| 165 | Road Upgrade | Waverley Road (From The Centreway to Walkers Road) | Requests to improve road surface condition. | City of Greater Geelong | Included in the 'Road Surfacing Asphalt Program' to complete patching & 40mm Overlay. | Short | Open | 2019-2020 (~ \$100,000) |
| 166 | Road Upgrade | You Yangs Road | Request to upgrade road surface. | City of Greater Geelong | Most sections near property entries are re-sealed. | Short | Closed | |
| 14. BRIDGE CONDITIONS | | | | | | | | |
| 167 | Bridge Condition | Bridge on Peak School Road at Howells creek | Review condition of culvert on Peak School Road. | City of Greater Geelong | City investigated as per inspection levels in 2017. No structural defects identified. | Short | Closed | |
| 168 | Bridge Condition | Grants Bridge on You Yangs Road | Request to check for any structural damages to Grants Bridge on You Yangs Rd due to trucks. | City of Greater Geelong | City investigated as per inspection levels. No structural defects identified. | Short | Closed | |
| 169 | Bridge Condition | Rothwell Bridge on Old Melbourne Road | Request to assess the bridge for any structural damage due to heavy vehicles. | City of Greater Geelong | City investigated as per inspection levels. No structural defects identified. | Short | Closed | |

| No. | Mode | Location | Issues | Responsible Authorities | Description | Timing | Status | Year |
|--------------------------------|------------------|--------------------------|---|--------------------------------|---|---------------|--------|-------------------|
| 170 | Bridge Condition | Windermere Road | Request to review Bridge condition. | City of Greater Geelong | City investigated as per inspection levels in 2017. No structural defects identified. | Short | Closed | |
| 171 | Bridge Condition | Curletts Road | Request to 'widen' existing narrow bridge. | City of Greater Geelong | New request to be reviewed | Short-Medium | Open | |
| 15. ENVIRONMENTAL WORKS | | | | | | | | |
| 172 | Environmental | Bacchus Marsh Road | Request to consider installing new signage to control Illegal dumping. | Regional Roads Victoria | Regional Roads Victoria to investigate and install warning signs. | Short | Open | 2019/20 - 2020/21 |
| 173 | Environmental | Little River Ripley Road | Install warning signs to stop illegal rubbish dumping. | City of Greater Geelong | Waste Management Unit have issued work orders to install warning signs. | Short | Open | 2019/20 - 2020/21 |
| 174 | Environmental | Sandy Creek Road | Request to manage 'rubbish dumping' along this road. | City of Greater Geelong | Maintenance unit have issued work instructions to install warning signs at key locations. | Short | Open | 2019/20 - 2020/21 |
| 16. LANDSCAPE WORKS | | | | | | | | |
| 175 | Landscaping | Forest Road North | Request to 'beautify' Forest Road North for the opening of Avalon Airport to International. | City of Greater Geelong | This will be discussed with Parks Unit. | Medium - Long | Open | 2024/25 - 2029/30 |

| No. | Mode | Location | Issues | Responsible Authorities | Description | Timing | Status | Year |
|-----------------------------|------------------|-------------------------|---|--------------------------------|---|--------|--------|-------------------|
| 176 | Landscaping | Lara Landscaping | Request to provide volunteers to carry out landscaping to all Lara Roundabouts. | City of Greater Geelong | Due to high risk involved, the city does not support this type of request to allow volunteers to carry out works in high risk zones, such as working within roundabouts due to OH & S and high-risk concerns. | Short | Closed | |
| 17. PUBLIC TRANSPORT | | | | | | | | |
| 177 | Public Transport | Avalon Airport | Request for a new bus services between Lara Train Station and Avalon Airport. | Department of Transport | Department of Transport have reserved land by Public Acquisition Overlay for a long-term future connection to Avalon Airport from Geelong-Melbourne rail line. Avalon Airport have also advocated for a new dedicated train station on the line between Lara and Little River. | Long | Open | 2024/25 - 2029/30 |
| 178 | Public Transport | Lara - Public Transport | Request to review existing bus routes, service timings and weekend services as Lara has grown in the last five years. | Department of Transport | Department of Transport stated that bus services in Geelong have strong connections to trains Monday to Friday. | Long | Open | 2024/25 - 2029/30 |
| 179 | Public Transport | Lara - Public Transport | Request the need for a 'direct' bus from Lara to Geelong. | Department of Transport | During the week, trains provide connectivity from Lara to Geelong Central Business District stations and buses connect to trains at Lara. During the weekend, the patronage on the Geelong bus network does not justify increasing frequencies to 20 minutes. Reducing frequency to 40 minutes to coordinate with trains would not be considered acceptable as it would reduce access in the local area. Department of Transport will | Medium | Open | 2021/22 - 2024/25 |

| No. | Mode | Location | Issues | Responsible Authorities | Description | Timing | Status | Year |
|-----|------|----------|--------|----------------------------|--|--------|--------|------|
| | | | | | continue to monitor patronage in order to adjust frequencies appropriately. | | | |