

CITY OF GREATER GEELONG

# LABUAN SQUARE

CONCEPT DESIGN PRESENTATION – NOV 2021



Existing conditions.  
Community and  
stakeholder vision.

# Community Vision for Labuan Square

Over a four week period in May 2021 we heard from almost 180 people who told us their vision for Labuan Square.

*The broad community vision is for Labuan Square to again be a vibrant, green, attractive, friendly, accessible, and safe public space for our neighbourhood with a mix of essential and specialty shops, cafés or eateries, services, and activities – a community hub.*



**Create a vibrant, green, attractive, friendly, accessible and safe public space.**

To achieve this we need to:

- Improve pedestrian access and amenity to Labuan square
- Slow cars through the Labuan Square area
- Improve public amenity (look and feel) on journey to Labuan Square. More trees, seating, signage..
- Improve toilet facilities/position





**Existing Conditions - East View**





Looking North East from Tennyson Street

## Existing Conditions - East View Tennyson



**Create a vibrant, green, attractive, friendly, accessible and safe public space.**

To achieve this we need to incorporate:

- Wadawurrung heritage and knowledge
- Sustainable landscape design
- More useable, vibrant spaces to help flow through the site
- Heritage
- Informal play
- Aesthetic night lighting
- Formal and informal sitting, alfresco opportunities



Looking South from Forster Street

# Concepts



## Create a safe and comfortable trip to and from Labuan Square.



To achieve this we need to:

- Upgrade footpath and crossing conditions, linkages
- Slow cars through the Labuan area via road treatments
- Improve the public amenity on the journey to Labuan Square. More trees, seating, signage
- Improve bike riding infrastructure and connections



## Create a safe and comfortable trip to and from Labuan Square.

- Footpath and crossing conditions, linkages
- Slow cars through the Labuan area via road treatments
- Public amenity on journey to Labuan. More trees, seating, signage
- Bike riding infrastructure and connections





View West towards Labuan Square

**Labuan Sq - Access and amenity - Forster St**



Extended kerb  
added planting

Proposed flush  
pedestrian  
pathway

Extended kerb and  
planting. Improve  
pedestrian crossing points

## Create a safe and comfortable trip to and from Labuan Square.

- Footpath and crossing conditions, linkages.
- Slow cars through the Labuan area via road treatments.
- Public amenity on journey to Labuan. More trees, seating, signage.
- Bike riding infrastructure and connections.



Extended kerb and  
planting

More street  
tree planting

Extended kerbs  
and planting





View East towards Labuan Square

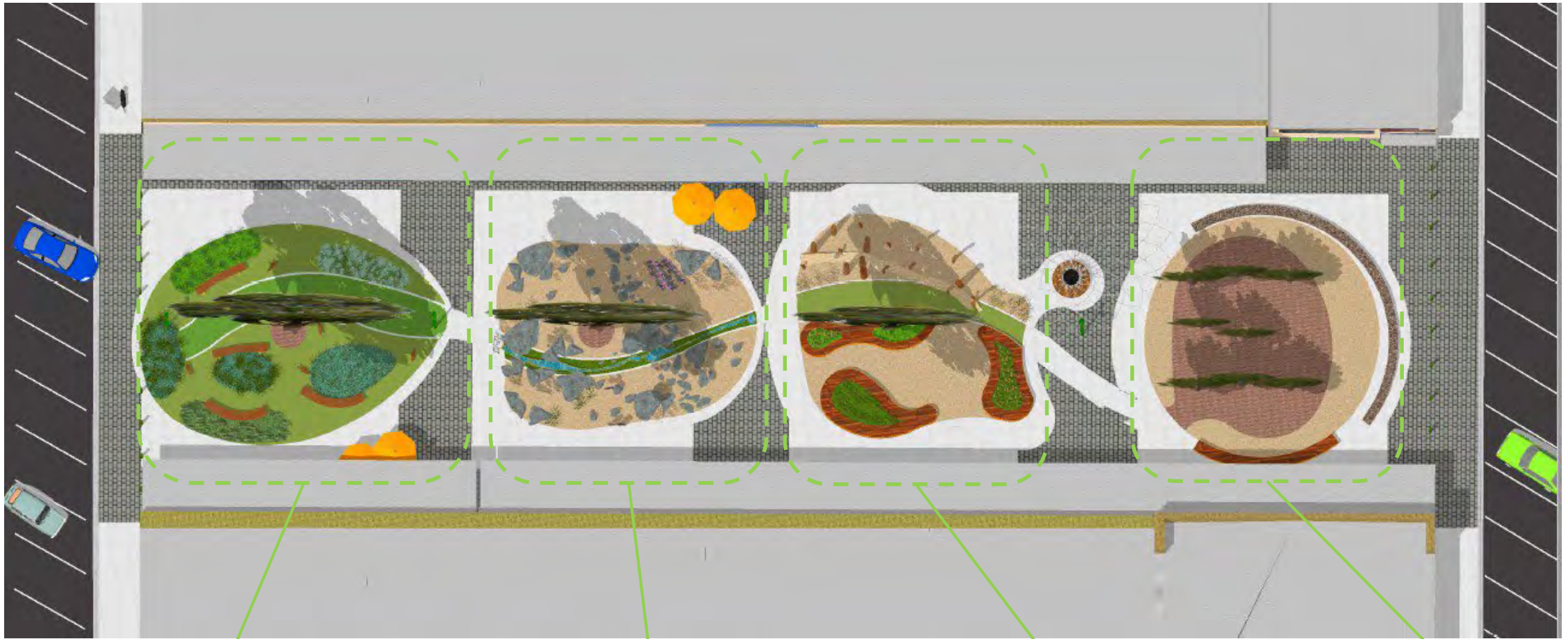
**Labuan Sq - Access and amenity - Forster St**







Forster Street



Tennyson Street

1-Grassy plains of Moorabool, the source of Cowies Creek

2-Basalt rocks of the gullies and steeper flowing areas

3-Open water, wetland and woodland areas of lower Cowies Creek

4-Exit into the Bay through the geomorphological significant cliffs





Looking South from Forster Street

- Soft mounded plantings
- Lawn area
- Timber seating
- Timber sculpted animal for sitting on.
- Remove light coloured concrete pavement and replace with new
- Orange coloured highlights on furniture, (based on cliff colours at Bay exit)

## Labuan Square - 1 - Grassy Plains





Looking South from Forster Street

- Soft mounded plantings
- Lawn area
- Timber seating
- Timber sculpted animal for sitting on
- Remove light coloured concrete pavement and replace with new
- Orange coloured highlights on furniture, (based on cliff colours at Bay exit)

## Labuan Square - 1 - Grassy Plains





Looking South from Forster Street

- Basalt rock landscape
- Informal seating
- Gravel surfaces
- Plantings through rock areas
- Push button controlled fountain stream. (re-use water in gardens)
- Remove light coloured concrete pavement and replace with new
- Orange coloured highlights on furniture, (based on cliff colours at Bay exit)





Looking South from Forster Street

- Basalt rock landscape
- Informal seating
- Gravel surfaces
- Plantings through rock areas
- Push button controlled fountain stream. (Reuse water in gardens)
- Remove light coloured concrete pavement and replace with new
- Orange coloured highlights on furniture, (based on cliff colours at Bay exit)





Looking South from Forster Street

- Water Hole seat planters
- Woodland pathway, weave poles
- Gravel surfaces
- Plantings in seats and gravel
- Remove light coloured concrete pavement and replace with new.
- Orange coloured highlights on furniture, (based on cliff colours at Bay exit)

## Labuan Square - 3 - Wetland and woodlands





Looking South from Forster Street

- Water Hole seat planters
- Woodland pathway, weave poles
- Gravel surfaces
- Plantings in seats and gravel
- Remove light coloured concrete pavement and replace with new
- Orange coloured highlights on furniture, (based on cliff colours at Bay exit)





Looking South from Forster Street

- Seat wall representing the cliffs at Corio Bay
- Seating surrounding the orchard
- Gravel surfaces, mulch
- Remove light coloured concrete pavement and replace with new
- Orange coloured highlights on furniture, (based on cliff colours at Bay exit)





Looking North from Tennyson Street

- Seat wall representing the cliffs at Corio Bay
- Seating surrounding the orchard
- Gravel surfaces, mulch
- Remove light coloured concrete pavement and replace with new
- Orange coloured highlights on furniture, (based on cliff colours at Bay exit)





- Urban Canopee
- Self supporting trellis system for growing vines on
- Seating all around
- Shade in summer and part shelter in winter

Labuan Square - Canopee

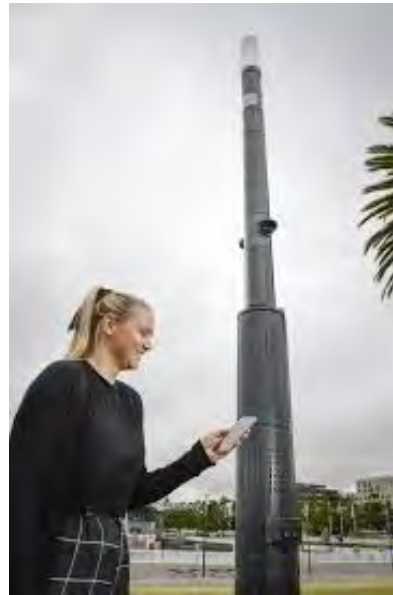




- Remove existing toilets, replace with gardens and trees
- Position new toilet on Forster Street car park, East
- Good views all around
- Easy access from Labuan Sq
- Landscape potential

**Labuan Square - Toilet position**





- Update lighting, not just safety type lighting but aesthetic. e.g. accentuate trees
- Integrate smart pole with lighting and CCTV, free Wi-Fi
- Sculpture-part of the cities relocatable sculpture program
- Ongoing programs to get more art onto shops



## Your feedback?

We would love to hear your thoughts on the design.

Please complete the feedback section to have your say on the upgrade of Labuan Square; or

Contact Genevieve Cooper on Ph 5272 5021 to discuss the project.

