



Plains freshwater sedge wetland providing critical habitat for the endangered Latham's Snipe & frogs.



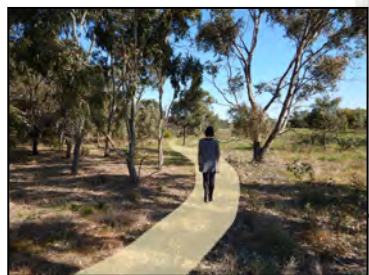
Bird hide to provide secluded views to Plains Freshwater Sedge Wetland & mature redgum habitat.



Woodland & grassland ecology provides habitat for snakes & reptiles.



Grassy open space for informal recreation.



Gravel path meandering through reserve providing nature trail.



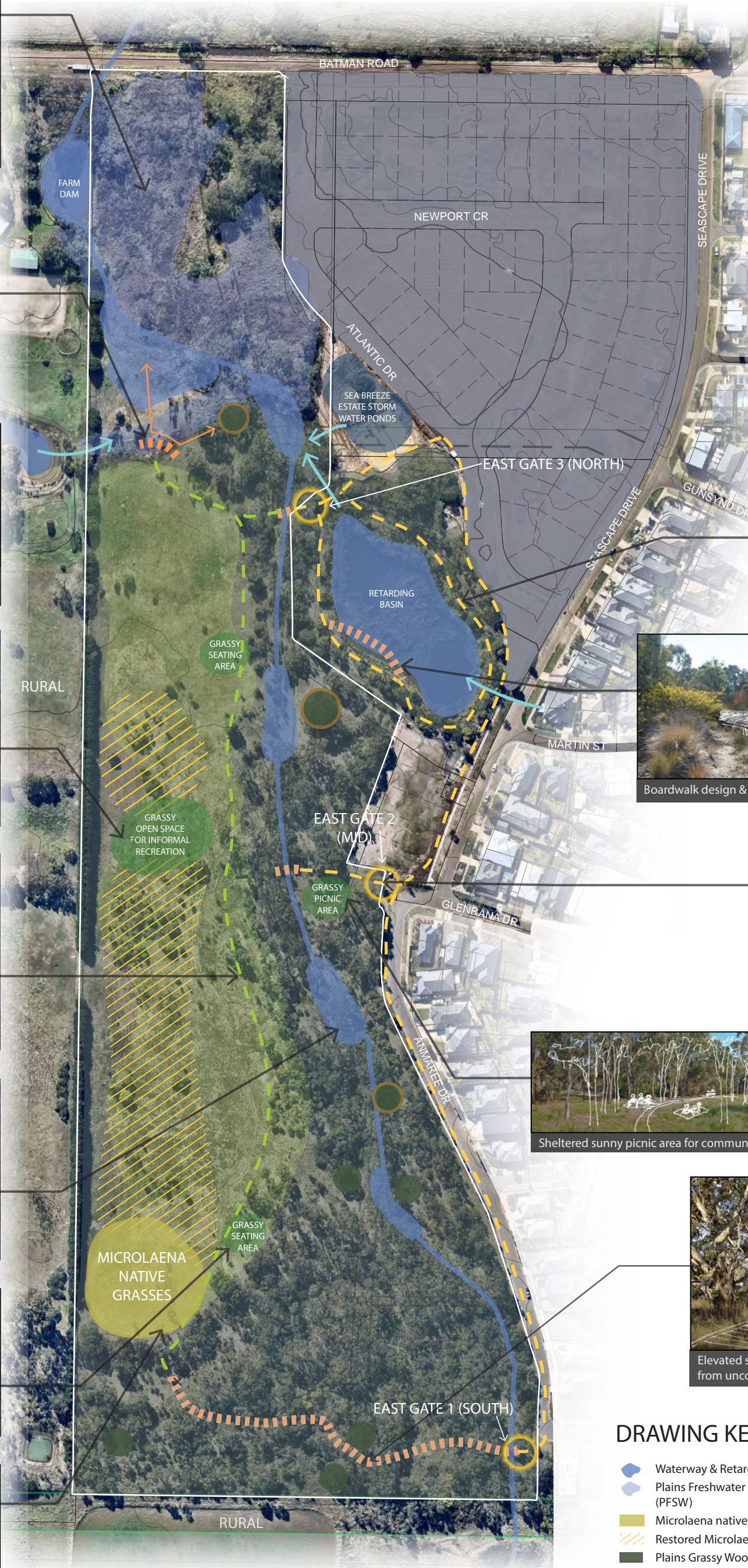
Improve long term health of redgums by enhancing waterflow into creek.



Use of fallen trees to create informal seating.



Ongoing protection & enhancement of remnant microlaena grassland habitat.



INDENTED HEAD NATURE RESERVE

VALUES

- Significant conservation reserve for CoGG.
- Demonstration site for indigenous regeneration techniques.
- Ecological focus for visitor experiences.
- Massive remnant redgum trees.
- Vibrant native wildlife habitat.
- Important habitat for bird species.
- Contrasts of bushland and rural land.
- Creek and redgum ecology.
- Significant Freshwater Sedge Wetland.

EXPERIENCES

- Engender conservation values for the new residents with ecological education for young and old residents.
- Contemplation of the natural environment.
- Sense of remoteness and tranquillity.
- Sounds, colours, and aromas of the bush.



Creation of short loop walking track around retaining basin wetland.



Boardwalk design & seating installation providing tranquil views to wetland.



Entry point into Indented Head Nature Reserve with seating and signage.



Sheltered sunny picnic area for community use close to main entrance.



Elevated southern boardwalk protecting Plains Grassy Woodland from uncontrolled pedestrian access.

DRAWING KEY

Waterway & Retarding Basin

Plains Freshwater Sedge Wetland (PFSW)

Microlaena native grasses

Restored Microlaena native grasses

Plains Grassy Woodland

Extended Plains Grassy Woodland

Significant Trees

Significant Trees with Bird Habitat

Nature Strip Trail Alignment

Internal Trail Alignment

Potential Informal Picnic Areas

Dog Proof Gate

Storm Water Drainage Flows

IHNr Boundary

Approx. Alignment of Elevated Boardwalk