



PARKING SPACES IN RUSSELL STREET
REALIGNED

EXTENSION OF LIBRARY FOOTPRINT
SHOWN IN BLUE

EXISTING DRIVEWAY AND CARPARK
REMOVED AND RETURNED TO PARKLAND

EXISTING TOILET BLOCK REMOVED AND
RETURNED TO PARKLAND

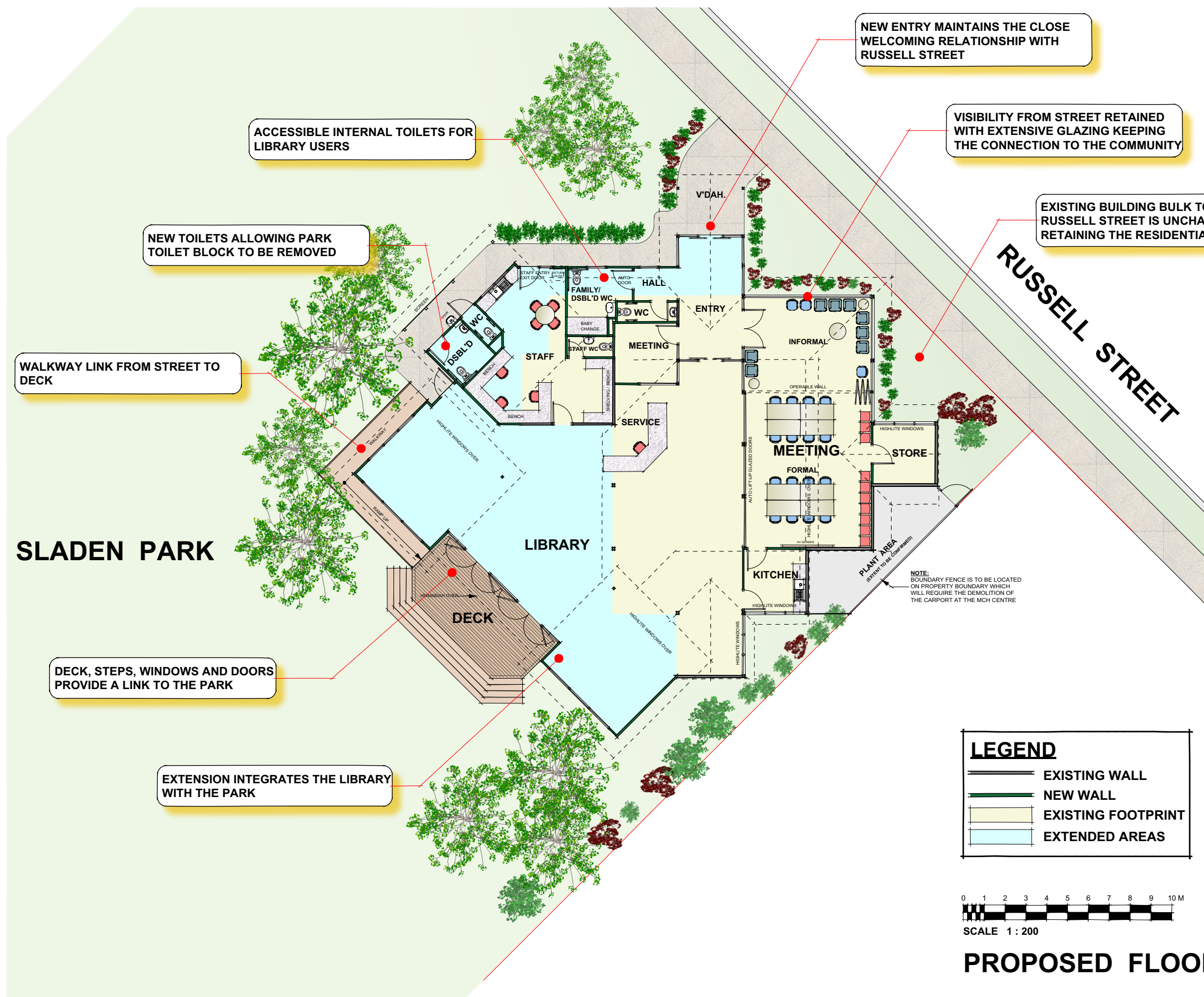


REVISION	DATE	REVISION NOTE	BY
NOTES			
Notes			

PROJECT	
Chilwell Library - Alterations and Additions	
ADDRESS	
51 Russell Street, Newtown	
CLIENT	
City of Greater Geelong	
DRAWING	
Proposed Site Plan	

Terry Atchison
Architect

1 / 7 Retreat Road, Newtown, Vic. 3220 T: 5222 5701 E: terry@terryatchison.com.au			
PROJECT NO.	20 028	DWG STATUS	Sketch Stage
DWG DATE	26.10.21	DWG NO.	REVISION
ORIGINAL SHEET SIZE	A3	SK 01	
SCALE @ A3	1:500		
DRAWN	TA	CHKD	TA
		OF	



REVISION	DATE	REVISION NOTE	BY
Notes			

PROJECT	Chilwell Library - Alterations and Additions
ADDRESS	51 Russell Street, Newtown
CLIENT	City of Greater Geelong
DRAWING	Proposed Floor Plan

Terry Atchison
Architect

1 / 7 Retreat Road, Newtown, Vic. 3220

T: 5222 5701 E: terry@terryatchison.com.au

PROJECT NO.	20 028	DWG STATUS	Sketch Stage
DWG DATE	27.10.21	DWG NO.	REVISION
ORIGINAL SHEET SIZE	A3		
SCALE @ A3	1:200		
DRAWN	TA	CHKD	TA
			OF

SK 02

DESIGN PRINCIPLES

- **COMMUNITY ENGAGEMENT**
- **CREATIVITY, HISTORY AND CULTURE**
- **RETAINING MODESTY**
- **WARM, WELCOMING AND SAFE SPACE**
- **ACCESSIBILITY AND FLEXIBILITY**
- **INTEGRATION WITH THE PARK**

DESIGN RESPONSES

- *The new Entry continues to address Russell Street.*
- *The transparency of the building facade to the street has been increased, and the building now is linked to the Park.*
- *The community will be genuinely engaged and heard through the consultation process for the redevelopment.*
- *The Detailed Design will consider engagement insights and incorporate these into the finishes, furnishings and detailing to create the look and feel of the building, including indigenous elements.*
- *Local knowledge, skills and connections will be drawn on to celebrate the history and culture of the area in the design.*
- *The modest bulk and scale of the building facing Russell Street is largely unchanged so that it continues to sit comfortably within the streetscape.*
- *The building is not intrusive or large, and continues the focus on servicing local people and events.*
- *The existing library is a warm, welcoming and safe space which feels like a 'second home'.*
- *This ambience has been retained by the modest scale of the extension, and the large windows allowing for winter sun penetration into the Entry.*
- *This feature of the library will be further considered in the engagement process and the Detailed Design stage.*
- *Accessibility to and within the building has been considered and improved so that all parts of the Library will now be fully accessible to all visitors and staff.*
- *Arrangement of doors, and operable walls allows the Library to be broken up into a variety of spaces for different uses.*
- *Flexibility will allow for different uses and for uses by groups at different life stages.*
- *Sladen Park provides a unique natural parkland setting for the Library and presents opportunities which are not taken advantage of in the existing Library.*
- *The extension connects the Library to Sladen Park through large windows and doors which provide views in both directions.*
- *The Deck provides a space for activities and recreation which further link the Library and the Park.*
- *Users of both the Library and the Park will be exposed to, and invited to explore the adjoining space.*

REVISION	DATE	REVISION NOTE	BY
NOTES			
Notes			

PROJECT	
Chilwell Library - Alterations and Additions	
ADDRESS	
51 Russell Street, Newtown	
CLIENT	
City of Greater Geelong	
DRAWING	
Design Principles and Responses	

Terry Atchison
Architect

1 / 7 Retreat Road, Newtown, Vic. 3220			
T: 5222 5701 E: terry@terryatchison.com.au			
PROJECT NO.	20 028	DWG STATUS	Sketch Stage
DWG DATE	27.10.21	DWG NO.	REVISION
ORIGINAL SHEET SIZE	A3	SK 03	
SCALE @ A3	NTS		
DRAWN	TA	CHKD	TA
		OF 3	