

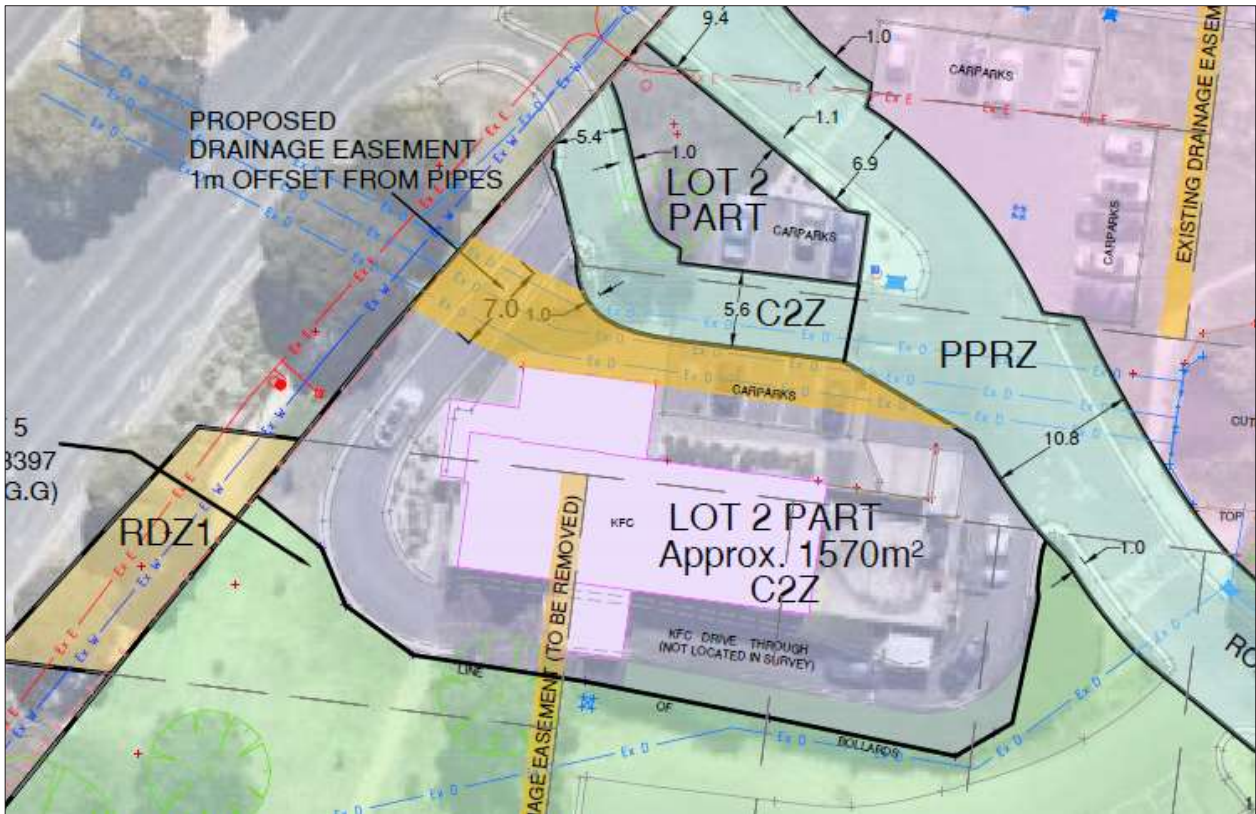
200 Princes Highway, Corio

- The land at 200 Princes Hwy, Corio contains a KFC restaurant and associated car parks which have been there for over 40 years.
- The property is commercially leased until 2029 with a further 2 x 5 years options to extend the lease.
- The leased area is within Stead Park, which is a well utilised, regionally significant reserve.
- The commercial activity is inconsistent with the reserve land use; however, the fast-food restaurant is a well-located and a popular amenity for the area.
- The City intends to subdivide approximately 1,570m² from the reserve and rezone it to a Commercial 2 Zone (C2Z) to conform with the developed use. This is shown in the images as Lot 2 on the proposed plan of subdivision.
- If the land is rezoned, the City proposes to sell the C2Z land which will enable the commercial use to continue without the City being responsible for maintaining the land and buildings.
- This proposed land sale will not negatively impact the reserve as the income will support ongoing maintenance and investment in improving Stead Park and other reserves for the enjoyment of the wider community.
- The subdivision will create road reserves to align with the constructed roads, create easements over the existing drainage and discontinue an unmade road reserve.

Locality Plans – 200 Princes Highway, Corio



Site Plan – Proposed plan of subdivision – Lot 2



Site Plan – Proposed plan of subdivision- Stead Park

