



THE CITY OF
GREATER GEELONG

SOUTHEAST BELLARINE COAST (4W-COLLENDINA)

COASTAL AND MARINE
MANAGEMENT PLAN

Contents

Acknowledgements	4
Project acknowledgements.....	4
Ministerial foreword.....	5
Mayor's message	6
Executive summary	7
Introduction	9
Strategic context.....	11
Policy context.....	12
Our planning framework	12
About the area	13
Wadawurrung living cultural heritage	13
Present day management.....	14
Landscape.....	14
Planning overlays.....	16
Local industry	16
Local community	16
How we engaged.....	17
Stakeholder engagement.....	17
Community engagement.....	17
Engagement informed plan	18
About this plan.....	19
Plan overview	19
Values, issues and opportunities	20
1. Acknowledge Traditional Owners rights, aspirations, and knowledge	20
2. Protect and enhance the marine and coastal environment	23
Natural features and landscapes	23
Cultural values and heritage sites.....	23
Value of marine and coastal Crown land.....	23
3A. Respect natural processes	26
3B. Strengthen resilience to climate change.....	26

4. Use and develop sustainably	31
Marine and coastal industries	31
Recreation and tourism	31
Buildings, structures, and access	32
5. Promote stewardship and collaborative management.....	35
Outcomes.....	37
Actions	39
Resource needs	43
Southeast Bellarine Biolink Master Plan	44
Implementation	46
Monitoring and evaluation	47
Monitoring five-year outcomes	47
Evaluation	47
Further consultation	48
Appendix 1	49
Bibliography	51

COVER IMAGE: Southeast Bellarine Coast

Acknowledgements

We acknowledge the Wadawurrung People as the Traditional Owners of the Lands, Waterways and Skies of Wadawurrung Country. We pay our respects to their Elders, past, present, and emerging. We Acknowledge all Aboriginal and Torres Strait Islander People who are part of our Greater Geelong community today.

The City of Greater Geelong is committed to genuinely partnering and meaningfully engaging with Wadawurrung Traditional Owners to support the protection of their Country, the maintenance of spiritual and cultural practices and the implementation of their Healthy Country Plan: *Paleert Tjaara Dja – Let's make country good together 2020–2030*.

PROJECT ACKNOWLEDGEMENTS

This plan has been developed in consultation with community and stakeholders from across the municipality. We would like to acknowledge the many individuals and organisations whose enthusiasm, commitment and contributions helped shape this plan.

COMMUNITY REPRESENTATIVE GROUP	PROJECT STEERING GROUP
Animal Justice Party	Wadawurrung Traditional Owners Aboriginal Corporation
Bellarine BirdLife Group	Barwon Water
Bellarine Catchment Network	Barwon Coast Committee of Management
Friends of Buckley Park	Borough of Queenscliffe
Friends of Ocean Grove Nature Reserve	Corangamite Catchment Management Authority
Geelong Environment Council	City of Greater Geelong
Geelong Field Naturalist Group	Department of Environment Land Water Planning
Ocean Grove and Barwon Heads Lions Club	Parks Victoria
Ocean Grove Coastcare Group	LANDHOLDER GROUP
Ocean Grove Community Association	Landholders adjoining the coastal Crown land and within the biolink region surrounding the Lonsdale Lakes.
Point Lonsdale Civic Association	
Queenscliff Community Association	
Queenscliff Environment Forum	
Swan Bay Environment Association	

We would also like to thank Barwon Coast Committee of Management, Borough of Queenscliffe and Hobsons Bay City Council for providing their Coastal and Marine Management Plans as guiding documents for this plan.

Ministerial foreword

A Coastal and Marine Management Plan is a public document, prepared under the *Marine and Coastal Act 2018* and approved by the Minister for Energy, Environment and Climate Change. It establishes an agreement between the Victorian Government, the land manager and the community as to how an area of coastal Victoria will be managed.

The Hon Lily D'Ambrosio MP

Minister for Energy, Environment, Climate Change

Mayor's message

On behalf of the City of Greater Geelong, and the Project Steering Group, I have great pleasure in presenting the Southeast Bellarine Coast (4W-Collendina) Coastal and Marine Management Plan.

Since 2021, we have been working towards developing a management plan for the Southeast Bellarine Coast, which includes the foreshore dune running from 4W at Fellows Rd, Point Lonsdale, through Buckley Park Foreshore Reserve Collendina at Bonnyvale Rd. The plan considers the connectivity of the adjacent coastal lakes of the Lonsdale Lake Wildlife Reserve, moonah woodland and adjoining foreshore areas, which all work together to form an important landscape-scale biolink.

The release of the *Marine and Coastal Act 2018*, and subsequent strategy and policy, meant there was more emphasis on state-wide protection of marine environments. A marine spatial planning framework was also introduced. To address these changes, this coastal and marine management plan has been developed.

The cornerstone of this plan is the ongoing need to recognise, protect and enhance our natural areas. It has been informed by the views of the Wadawurrung Traditional Owners, a highly engaged community, private landholders, land managers and stakeholders.

To meet the needs of this unique, remote, and environmentally significant coastal environment, the plan focuses on management of the landscape, and best-practice action. As well as factoring in the increasing impacts of sea-level rise caused by climate change, it also considers the needs of an ever-growing number of locals and visitors, whose enjoyment of this coastline must be balanced against the need to protect the area for the benefit of future generations.



A handwritten signature in black ink, which appears to read 'Peter Murrihy'.

Cr Peter Murrihy

Mayor
City of Greater Geelong

Executive summary

The Bellarine Peninsula Southern Coast extends from the mouth of Swan Bay, Queenscliff around the head of Port Phillip Bay at Point Lonsdale, through the Southeast Bellarine Coast (Buckley Park Foreshore Reserve), on to the mouth of the Barwon River, and beyond to Breamlea.

There are four foreshore managers along the Bellarine Peninsula Crown land coastline:

- Barwon Coast Committee of Management – west of Bonnyvale Rd (at Collendina – just east of 7W), through to 42W (at the west end of Thirteenth Beach), which includes the lower Barwon River.
- Barwon Water – Black Rock section between 13th Beach and Bancoora
- City of Greater Geelong – Collendina (Bonnyvale Rd, just east of 7W) east to 4W, and
- the Borough of Queenscliffe – 4W through to the Point Lonsdale Lighthouse (1W), and into Port Phillip Bay.

Emergency Markers

The beach marker system (#W) is used by emergency services as the location for a particular section of coastline. The Bellarine Peninsula Southern Coast includes the natural foreshore areas from 1W at Point Lonsdale through to 42W at the end of Thirteenth Beach, Breamlea.

The *Southeast Bellarine Coast (4W-Collendina) Coastal and Marine Management Plan (CMMP)* relates to only the coastal Crown land managed by the City of Greater Geelong.

Beyond the coastal Crown land coastline lies the Lonsdale Lake Wildlife Reserve, comprising four lakes managed by Parks Victoria. These lakes are land locked by private land backing onto the dune system and contain a significant green break between townships, environmental values, conservation zones and farming land. Due to the connectivity of these environs and their inhabitants, the Lonsdale Lake system, extensive dune system and biolink has been considered in developing this Coastal and Marine Management Plan.

This Coastal and Marine Management Plan (see page 9) sets the vision, objectives, priority actions and outcomes we aim to achieve in this area over the next ten years. In formulating this plan, we have taken into account:

- legislative and policy directions provided by the Victorian Government
- *Bellarine Peninsula Distinctive Areas and Landscapes Statement of Planning Policy 2022*
- similar plans developed by the Barwon Coast Committee of Management and Borough of Queenscliffe
- Wadawurrung *Paleert Tjaara Dja: Healthy Country Plan 2020–2030*
- relevant City-led strategies, including the *Environment Strategy 2020–30* and *Settlement Strategy 2020*
- feedback provided by the Project Steering Group, Community Representative Group and Landholder Group
- views expressed by those who participated in a community engagement process.

In line with these inputs, the plan addresses:

- balancing the demands for greater visitation to the area with environmental protection
- supporting programs to care for, rehabilitate and protect natural habitats and biodiversity
- planning for the increasing effects of climate change
- increasing the level of community, user and stakeholder engagement in setting priorities.

A monitoring, evaluation, reporting and improvement plan will inform the ongoing development of the Coastal and Marine Management Plan. All activities will be supported by research, investigations and planning designed to help the City, in conjunction with the Project Steering Group, to prepare for, and respond to, both short-term issues and long-term changes.

PLAN OVERVIEW

Vision: Ensuring and replenishing coastal and marine ecosystems to support nature, whilst fostering cultural connection and community stewardship.

OBJECTIVES					
1. Acknowledge Traditional Owners' rights, aspirations & knowledge	2. Protect & enhance the marine & coastal environment	3a. Respect natural processes	3b. Strengthen resilience to climate change	4. Use and develop sustainably	5. Promote stewardship and collaborative management
Understand, acknowledge and act upon rights and aspirations of Wadawurrung People for Country.	Protect and enhance intrinsic values, and goods and benefits, of the marine and coastal environment.	Understand dynamic natural processes in planning for, and managing, risks to people and assets.	Understand current and future stressors and assess how well marine and coastal environments can cope with, and adapt to, change, and how that can be strengthened	Consider impacts and benefits of existing, as well as new, use and development on the environment, other users and prosperity of future generations.	Take a stewardship approach, build understanding and knowledge, engage and collaborate.
VALUES, ISSUES AND OPPORTUNITIES: How the local context is shaping our response (refer page 20)					
OUTCOMES: What we want coastal and marine management to achieve (refer page 37)					
ACTIONS: How we will achieve the outcomes (refer page 39)					
RESOURCE NEEDS: What we need to support sustainable marine and coastal management (refer page 43)					
IMPLEMENTATION: How we will track progress and identify opportunities for refinement (refer page 46)					

Introduction

The purpose of the *Southeast Bellarine Coast (4W-Collendina) Coastal and Marine Management Plan* is to describe how the City of Greater Geelong will manage the Crown land coastal and marine areas of the Southeast Bellarine, working with Wadawurrung Traditional Owners and stakeholders.

This plan has been developed to complement the *Corio Bay Coastal and Marine Management Plan*. Together, both plans set the strategic direction for the management of Crown land coastal areas managed by the City (see Figure 1).



Figure 1: City of Greater Geelong's Crown land coastal areas to be managed under Coastal and Marine Management Plans

In *Greater Geelong: A Clever and Creative Future*, the thirty-year vision for the Greater Geelong region, the community described the uniqueness and significance of natural bushland, coastlines, wetlands, rivers and beaches as something they highly valued, stating a desire to preserve, enhance and grow these natural areas.

The Victorian Government's *Biodiversity 2037* plan includes ambitious targets to stop the state's declining biodiversity and achieve a net gain in the extent and condition of habitat across the terrestrial, waterway and marine environments. This emulates the values and programs set by the Wadawurrung Traditional Owners as part of the *Paleert Tjaara Dja: Healthy Country Plan 2020–2030*, as well as The City of Greater Geelong *Environmental Strategy 2020–30*, which aims to conserve the environment and achieve a net gain of biodiversity within Greater Geelong.

The Department of Environment, Land, Water and Planning's *Marine and Coastal Strategy 2022* establishes a state-wide direction for achieving the long-term outcomes outlined in the *Marine and Coastal Policy 2020*. It identifies priority actions to be completed over the next five years, which include:

- supporting Wadawurrung Traditional Owners to embed their rights and obligations into planning and management of the marine and coastal environment
- improving the condition and connectivity of habitats, and respect and care for marine and coastal areas
- supporting sustainable use and development of the marine and coastal environment
- adapting to impacts of climate change
- implementing integrated marine planning
- identifying the resource needs and funding for sustainable marine and coastal management.

This Coastal and Marine Management Plan has been structured to align closely with the legislation, guidelines, and government policy, including key objectives and outcomes. The plan presents:

- a vision and objectives that reflect community and stakeholder sentiment and align with legislative direction
- outcomes that convey the values and future aspirations for the coastal and marine environments of the Southeast Bellarine Coast and will guide actions.
- current and emerging issues, including those which may potentially threaten values
- objectives for the next 10 years
- priority actions for the short, medium and long term
- an implementation pathway and monitoring framework.

The Project Steering Group, Community Representative Group, Landholder Group and Greater Geelong community helped define the values, issues and opportunities. Ongoing community and stakeholder consultation and input helped inform the coastal and marine context, potential opportunities, and priority actions.

Strategic context

Coastal management reform in Victoria, led by the Department of Environment, Land, Water and Planning, has prompted new legislation, policy, and guidance material over recent years.

These reforms support coordinated coastal and marine management, providing the tools to identify and adapt to coastal hazards in the future. The *Crown Land (Reserves) Act 1978* enables local government to manage coastal crown land on behalf of the state government. Current coastal management arrangements are also driven by the *Marine and Coastal Act 2018*.

The planning and decision pathway outlined by the Department of Environment, Land, Water and Planning in the *Coastal and Marine Management Plan Guidelines 2022* is detailed in Figure 2.

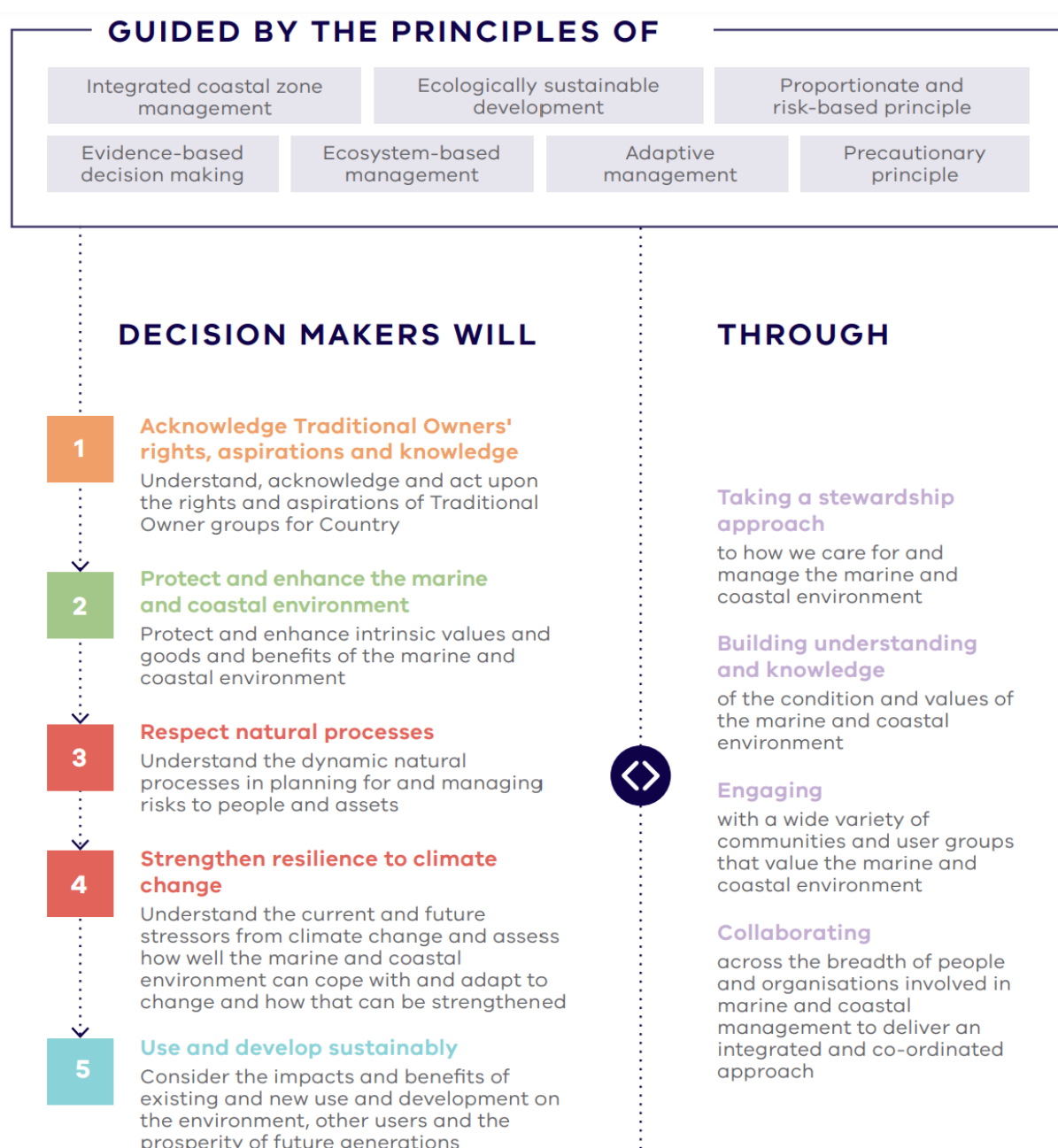


Figure 2: The Planning and Decision Pathway shows how the objectives and guiding principles of the Act should be used in decision making in the marine and coastal environment

POLICY CONTEXT

Table 1 shows the three levels of institutional arrangements that make up the core of coastal and marine management arrangements in Victoria – state, regional and local.

When factoring in all these institutional arrangements, coastal management becomes very complex. Consequently, there is a large range of relevant legislation, government policies, plans, reports and other documents that have been factored into the formulation of this plan. These are listed in Appendix 1.

Table 1: Coastal and marine planning hierarchy

Level	Document	Purpose
State	<i>Marine & Coastal Act 2018</i>	Sets state-wide direction for coastal planners and managers
	<i>Marine & Coastal Policy 2020</i>	
	<i>Marine and Coastal Strategy 2022</i>	
Regional	<i>Corangamite Regional Catchment Strategy to 2027</i>	Identifies regional values, issues and priorities and sets regional vision, guiding principles and strategic directions to guide local management
	<i>Wadawurrung Paleert Tjaara Dja: Healthy Country Plan 2020-2030</i>	
	Regional and Strategic Partnership agreements	
Local	<i>Southeast Bellarine Coast (4W-Collendina) Coastal and Marine Management Plan 2023–2033</i>	Sets out the requirements and planning for a coastal area and includes actions and implementation arrangements describing proposed works for the area
	<i>Southeast Bellarine Biolink Master Plan 2023-2033 (draft)</i>	
	Local Strategies	

OUR PLANNING FRAMEWORK

The key City-led strategies that this plan must align with include our *Sustainability Framework 2020*, *Climate Change Response Plan 2021–30* and, in particular, Goal 4 of the *Environment Strategy 2020–30* (see box inset).

Goal 4: Protect, enhance and restore biodiversity.

Principles:

- Collaborate with the Wadawurrung Traditional Owners to connect culture and biodiversity
- Protect and enhance indigenous biodiversity
- Adaptive management approach to biodiversity conservation.
- Build community knowledge, engagement and partnerships.

Source: *The City of Greater Geelong Environment Strategy 2020–30*

About the area

Areas of state significance occur along the Bellarine Peninsula Southern Coast and extend between settlement boundaries from Queenscliff through to Point Lonsdale in Port Phillip Bay, before following a remote southern coastal dune system for approximately 10 kilometres to Ocean Grove. It then extends along the Spit, Barwon River estuary and the Barwon Bluff at Barwon Heads, and through to Breamlea.

The City is the land manager responsible for the Southeast Bellarine Coast foreshore reserve (part of Buckley Park Foreshore Reserve) from 4W to Collendina (from Fellows Road, Point Lonsdale to Bonnyvale Road, Collendina) – a narrow linear coastline area of 119 hectares that is approximately 5 kilometres long and 200 metres wide. This area is recognised as state significance, as highlighted in Figure 3 below.

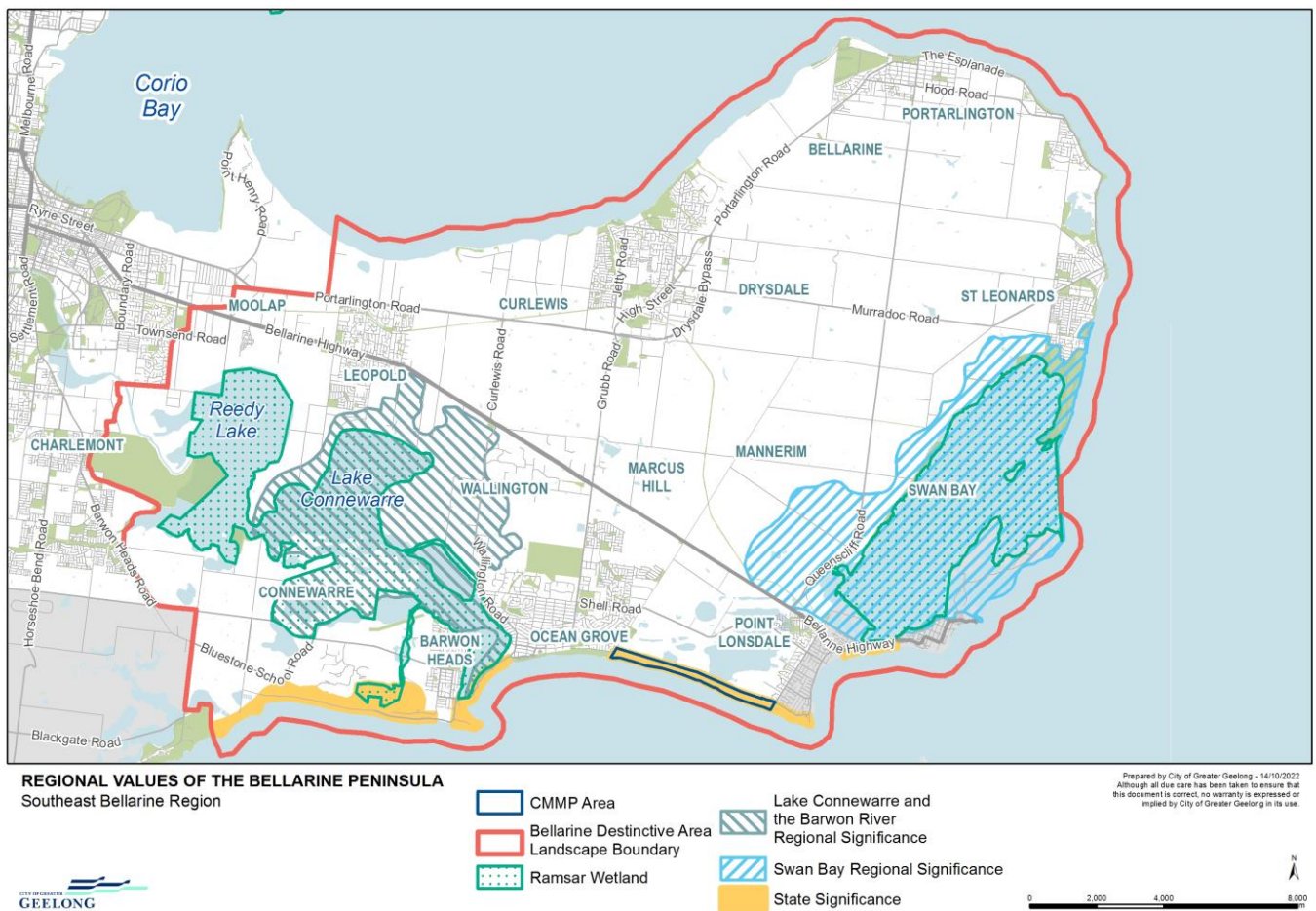


Figure 3: State and regional* environmental values of the Bellarine Peninsula

*The entire Bellarine Peninsula within the Distinctive Areas and Landscapes boundary is recognised as regionally significant (Bellarine Northern Coast and Central Hills Landscape, Lake Connewarre and Barwon River Landscape and Swan Bay Landscape). This excludes the settlement boundaries.

WADAWURRUNG LIVING CULTURAL HERITAGE

The Wadawurrung Traditional Owners continue to be the first custodians of this coastline, and the bountiful lands, waters and seas of the Bellarine Peninsula which is rich in Wadawurrung living cultural heritage. Wadawurrung People have a strong connection to Country and continue to play an important role in the land, water and natural landscape.

The Wadawurrung Traditional Owners Aboriginal Corporation are the Registered Aboriginal Party for the region under the Victorian *Aboriginal Heritage Act 2006*. Wadawurrung People have continually occupied the Geelong / Djilang area for over 30,000 years. Their Country extends from the Otway Ranges to the Werribee River / Wirribi Yalluk, incorporating the Bellarine Peninsula and Geelong. The Bengalat Balug clan were the custodians of the Bellarine Peninsula area.

Wadawurrung People concentrated occupation in the coastal zone and in particular the Moonah Woodlands and freshwater wetlands, the open woodlands of the Bellarine Peninsula, and along river flats and swamps, where seasonal food availability was plentiful. The beach interface, dune system, woodland and wetland environments of the Bellarine Peninsula Southern Coast area would have provided an abundance of food and resources to Wadawurrung people.

The Peninsula is named after the Wadawurrung word 'Bellawiyn' which means 'bended elbow' and fire – 'a place to rest around the fire'. The Victorian Aboriginal Heritage Register (VAHR) indicates that there are hundreds of registered archaeological sites, which reveal a long period of residency and utilisation by Wadawurrung People on the Peninsula. The reserve contains a rich and important heritage of middens, surface scatters, domestic remains and stone artefacts – indicators of past occupation. Figure 4 outlines the boundaries of Wadawurrung Country.

PRESENT DAY MANAGEMENT

While Wadawurrung Traditional Owners continue to play a vital role in managing Country, the designated land manager for the Bellarine Peninsula Southern Coast foreshore rests with the City (4W to Collendina) and adjacent land managers. Both Barwon Coast Committee of Management (2020-2025) and Borough of Queenscliffe (draft) have Coastal and Marine Management Plan's in place to support adjacent coastlines. This Coastal and Marine Management Plan completes the Crown land foreshore between these two land management areas. (see Figure 5 for the management boundaries of the Bellarine Peninsula Southern Coast).

LANDSCAPE

The Southeast Bellarine Coast relates to the coastal dune system located in the City of Greater Geelong Local Government Area. The area is one of great natural beauty featuring unique landscapes and a diversity of coastal ecosystems. It comprises a well-vegetated barrier dune system that defines a low-lying hinterland of moonah woodland. The landscape behind the coastal crown land reserve is intrinsically linked via water flows from Bonnyvale wetlands, through the natural saltmarsh and coastal wetlands of the Lonsdale Lakes Wildlife Reserve, and then on to Swan Bay, an internationally listed Ramsar wetland.

The 119-hectare coastal dune reserve forms part of the green-break biolink between the Ocean Grove and Point Lonsdale urban fringes. It has significant cultural heritage and historical sites and plays a vital role in protecting the coast from climate change impacts.

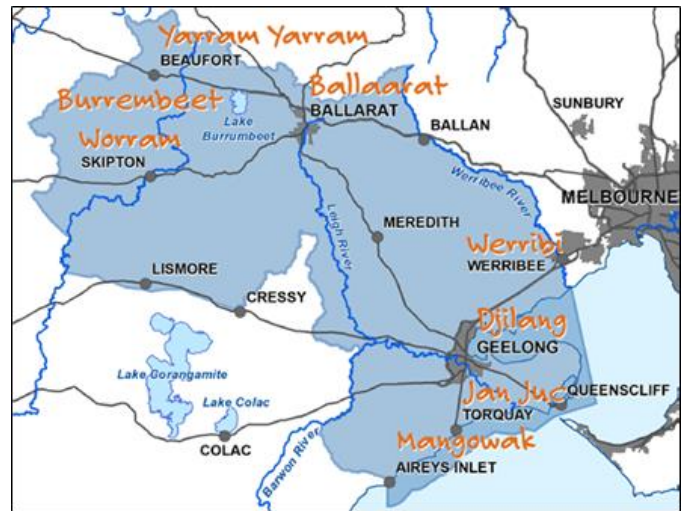


Figure 2: Map of Wadawurrung Country

At a landscape scale, the combined terrestrial, wetland, coastal and marine environments make this one of the largest and most important places for biodiversity remaining on the Bellarine Peninsula. The precinct *Southeast Bellarine Biolink Master Plan* (see page 44) will address this broader cross-jurisdiction landscape.

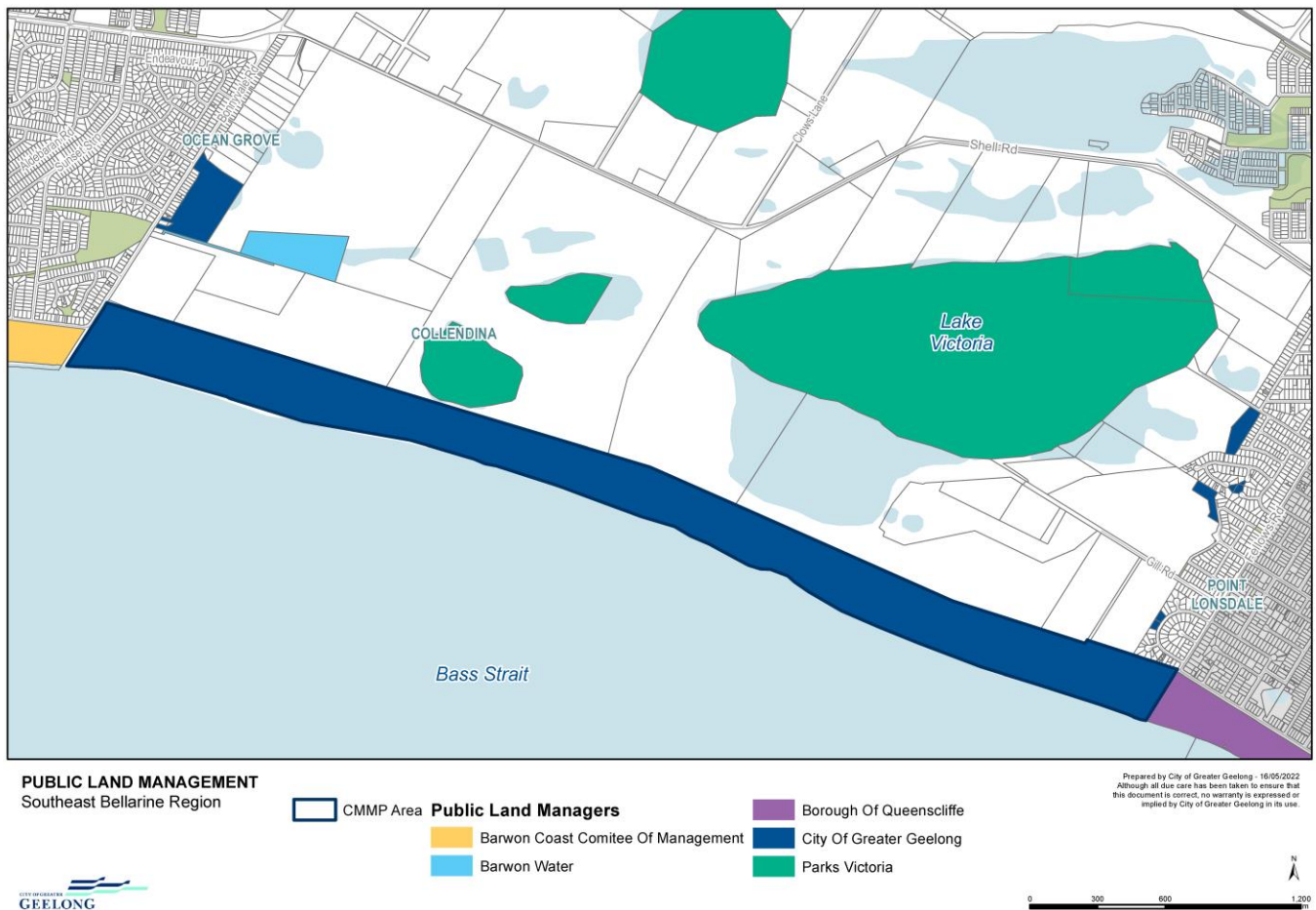


Figure 3: Crown land managers in the Southeast Bellarine region

PLANNING OVERLAYS

The completion of the *Southeast Bellarine Coast (4W-Collendina) Coastal and Marine Management Plan* coincides with the delivery by the Department of Environment, Land, Water and Planning Distinctive Area and Landscape legislation. The Victorian Government has legislated to protect and enhance Victoria's distinctive areas and landscapes, so they can be enjoyed by current and future generations. Parts of the City of Greater Geelong and all the Borough of Queenscliffe, which together constitute the Bellarine Peninsula, were declared a distinctive area and landscape under section 46AO of the *Planning and Environment Act 1987* (the Act).

The Bellarine Peninsula Distinctive Area and Landscapes *Statement of Planning Policy (2022)* aims to conserve and enhance the significant landscapes, environment, biodiversity and cultural heritage of the region. It sets a 50-year vision that identifies the values, priorities and preferences of the Victorian community in relation to the distinctive attributes of the declared area, including preferences for future land use, protection and development. Importantly, the planning policy also includes protected settlement boundaries to help assure local communities about the direction of future growth of settlements in the declared area. Objective Three is 'To conserve and enhance the significant biodiversity, ecological and environmental values of the declared area.'

The remaining green-break area is listed as a regionally significant landscape, as well as a biodiversity connection. Ocean Grove and Point Lonsdale are located adjacent to this State Significant landscape, and close to areas of Wadawurrung living cultural heritage and areas of high biodiversity value. As such, they should be protected from urban encroachment. Protected settlement boundaries are now being implemented for both Ocean Grove and Point Lonsdale townships to restrict development and encroachment.

LOCAL INDUSTRY

Historically, the Bellarine Peninsula has been dominated by agricultural and tourism industries, with seaward connections to Melbourne and Sorrento across Port Phillip Bay.

Visitor usage to the reserve can increase by 150 per cent during peak periods, which can negatively impact on biodiversity values. As pressure on the green break between the townships of Ocean Grove and Point Lonsdale continues to increase, high community usage and even greater numbers are expected during peak summer periods.

The adjacent land is still listed as an extractive industry interest area, which is in direct conflict with the environmental values outlined previously. While this state overlay is an information layer, only indicating where natural resources *could* be extracted, both the Wadawurrung Traditional Owners Aboriginal Corporation and the City have requested this overlay be removed to avoid conflicting values.

LOCAL COMMUNITY

The City of Greater Geelong Local Government Area has an estimated population of 269,502 people (2021 census) with population growth forecast to increase 43.17% to 2041. This is an estimated 118,569 extra Geelong residents across the region between 2021 and 2041.

With population growth expected, the number of people using the publicly accessible areas and associated threats (such as dogs, increased fire risk, erosion, vegetation destruction, pollution and litter) will increase. In terms of use, this coastal area does not form part of a recreation node and as such there is no future anticipated requirement to fulfil such a role.

How we engaged

This plan sets the strategic direction for our marine and coastal management arrangements for the next 10 years and has been informed by community and stakeholder input.

The framework, including the vision, aims to reflect expectations and aspirations for the Southeast Bellarine Coast.

The following is a short summary of key engagement activities with stakeholders and the community. Further feedback has been incorporated into Section 6.

For full details about the engagement process, refer to [Supplement A – Engagement Report](#).

STAKEHOLDER ENGAGEMENT

All coastal and marine areas have a wide range of stakeholders. In addition to land managers, there are various public and private agencies, landholders and community groups each with unique values, interests, and concerns.

To meet the needs of this diverse range of users, activities and priorities is complex and required a considered and clear method.

A stakeholder engagement plan was developed to inform the engagement throughout the development of the plan. Key to the stakeholder engagement were:

1. The Project Steering Group
2. The Community Reference Group.
3. Landholder Group

For a full list of stakeholders who contributed, please refer to the Acknowledgements on page 4.

COMMUNITY ENGAGEMENT

During the community engagement process, we received 385 online contributions from community members about usage of the space and many more through open house and formal meetings. The top three uses identified were:

1. access to ocean/beach
2. nature walks
3. walking/running.

The Bellarine Peninsula community and visitors value the remoteness and environmental significance of the Southeast Bellarine Coast, along with accessibility for passive recreation, cultural heritage and diversity of its coastal and marine areas.

These areas are used and enjoyed in a variety of ways, including:

- recreational opportunities, which can be improved with better facilities for access and enjoyment
- community benefits, such as open space, clean air and water, natural beauty and views, peace and serenity
- a healthy environment that supports unique and diverse ecosystems, and is enhanced by conservation initiatives
- a connection with cultural heritage, history, character, and identity
- environmental engagement activities.

As the coastal zone plays an important role in the lifestyle of Bellarine Peninsula residents and visitors, the increasing pressures from development and growth, as well as a changing climate, need to be carefully managed. Cohesive and coordinated strategic coastal management is essential for the City to retain a balance between protecting natural values, and the community's desire for increased use and access.

Visitors use the public areas via formalised access points, with the majority engaging in passive recreation such as running, nature walking, dog walking or birdwatching. This aligns with the community responses to the values and threats of the area, with a high level of appreciation for conserving and protecting this region for its natural values.

Some threats identified by the community included illegal uses of the reserve such as mountain bike riding, horse-riding, fires and destruction of vegetation. While all these threats have been observed and reported, continued efforts from land managers, private landholders and police have mitigated these activities.

One other significant threat identified and highlighted by the community, was people walking dogs off-leash during restricted periods. This activity poses an ongoing threat to beach nesting birds and wildlife using this area.

ENGAGEMENT INFORMED PLAN

The input from community, stakeholders, the Project Steering Group, Community Reference Group and Landholder Group have informed the values, issues and opportunities of this Coastal and Marine Management Plan.

Extensive engagement and wide-spread stakeholder input have been vital in informing the key directions and priorities of the plan to ensure alignment to community desires for the management of this coastal Crown land. The outcomes and implementation actions are positioned to mitigate the threats and challenges raised during the consultation process, to ensure the values of the Southeast Bellarine Coast are protected and enhanced.



Image 1: City Nature Reserves Staff conducting site tours as part of the community engagement process.

About this plan

The Coastal and Marine Management Plan has been deliberately designed to strongly align with the Victorian Government's *Marine and Coastal Policy*.

In aligning with the policy, it ensures the plan meets the legislative requirements set under the *Marine and Coastal Act 2018* and supports integrated marine planning along all areas of coastline. To highlight this alignment, the objectives have been colour coded in a manner that is similar to the state policy (see Table 2).

The plan is also designed to align with Goal 4 of *The City of Greater Geelong Environment Strategy 2020–30* (see Our Planning Framework on page 11).

PLAN OVERVIEW

Vision: Healthy and resilient coastal and marine ecosystems where nature thrives, whilst fostering cultural connection and community stewardship.

OBJECTIVES					
1. Acknowledge Traditional Owners' rights, aspirations & knowledge	2. Protect & enhance the marine & coastal environment	3a. Respect natural processes	3b. Strengthen resilience to climate change	4. Use and develop sustainably	5. Promote stewardship and collaborative management
Understand, acknowledge and act upon rights and aspirations of Wadawurrung People for Country.	Protect and enhance intrinsic values, and goods and benefits, of the marine and coastal environment.	Understand dynamic natural processes in planning for, and managing, risks to people and assets.	Understand current and future stressors and assess how well marine and coastal environments can cope with, and adapt to, change, and how that can be strengthened	Consider impacts and benefits of existing, as well as new, use and development on the environment, other users and prosperity of future generations.	Take a stewardship approach, build understanding and knowledge, engage and collaborate.
VALUES, ISSUES AND OPPORTUNITIES: How the local context is shaping our response (refer page 20)					
OUTCOMES: What we want coastal and marine management to achieve (refer page 36)					
ACTIONS: How we will achieve the outcomes (refer page 38)					
RESOURCE NEEDS: What we need to support sustainable marine and coastal management (refer page 42)					
IMPLEMENTATION: How we will track progress and identify opportunities for refinement (refer page 43)					

Values, issues and opportunities

Through consultation with community and stakeholders, perspectives and experiences have been used to establish values, issues, and opportunities for the marine and coastal areas of the Southeast Bellarine managed by the City of Greater Geelong.

1. ACKNOWLEDGE TRADITIONAL OWNERS RIGHTS, ASPIRATIONS, AND KNOWLEDGE

Understand, acknowledge, and act upon the rights and aspirations of Wadawurrung People for Country

The Wadawurrung Traditional Owners Aboriginal Corporation are the Registered Aboriginal Party for this region. Wadawurrung People have and continue to maintain a strong connection with their lands, waters and seas.

Wadawurrung People hold many important stories and experiences to be shared from living with this 'Bellawiyin' landscape. Wadawurrung storytelling explains changes in their lands and seascapes, their interactions with flora and fauna, and their relationships with significant sites – from places of ritual and ceremony to activities of everyday life.

We respect the Wadawurrung Traditional Owners' rights to self-determination, so that their aspirations for lands, waters and culture are realised through transfer of relevant decision-making powers. Wadawurrung traditional ecological knowledge and practices inform planning, land and water-management decisions, and help protect the environment and biodiversity. The Southeast Bellarine Coast is respected as a place of significance to the Wadawurrung People.

The community value the cultural heritage of this region with many contributions highlighting the need for greater appreciation, acknowledgment and signage links across this landscape. There is an opportunity to learn marine and coastal knowledge and practices of Wadawurrung People because of this long custodianship. Through appreciating and acknowledging this history, there is the opportunity to draw from these experiences in our management approaches, protecting and enhancing what has come before, and enabling its continuation in the future. There are many sites of cultural significance throughout the Bellarine Peninsula Southeast Coast, many of which remain undocumented. Figure 6 shows the existing 'Area of Cultural Heritage Sensitivity' overlay.

Support for Traditional Owners is essential in the integration of their *Paleert Tjaara Dja: Healthy Country Plan 2020–2030* principles and programs in this plan. Table 2 outlines the values, issues and opportunities for acknowledging Traditional Owners rights, aspirations and knowledge. As the Caring for Country team is established, opportunities for increased guidance, on-site representation and delivery by the Wadawurrung will ensure greater understanding and knowledge sharing to enable their *Paleert Tjaara Dja* - Let's 'make Country good together' approach.

Table 2: Values, issues, and opportunities for acknowledging Wadawurrung Traditional Owners rights, aspirations and knowledge

Values	Issues	Opportunities
<ul style="list-style-type: none"> • Respect and acknowledgement for Wadawurrung Traditional Owners and their cultural, ancestral, spiritual and historical connections to Country • Wadawurrung People's right to access and care for Country • Wadawurrung cultural sites and places • Bush tucker, medicines and resources • Protection of native animals including birds • Connectivity with Country, including Coastal and Sea Country 	<ul style="list-style-type: none"> • Genuine engagement from the beginning of decision-making processes that support cultural governance • Lack of coordination between land managers • Disconnection between Traditional Owners and Country • Lack of recognition, acknowledgement and understanding of the Wadawurrung • Lack of capacity • Inappropriate visitation • Lack of knowledge of cultural heritage by broader community 	<ul style="list-style-type: none"> • Strengthen partnerships with Traditional Owners and develop understanding of self-determination and expectations under the guidance of the <i>Paleert Tjaara Dja: Healthy Country Plan 2020-30</i> • Protect and retain culturally significant sites and connections to Country • Provide opportunities for re-connection with Country • Promote Wadawurrung language through naming of Country and connection along the entire Bellarine Peninsula Southern Coast • Promote connection to Country, share stories through walking tours, interpretative signage and so on • Investigate management and leadership practises under co-custodianship • Develop integrated and inclusive cultural heritage management with the Caring for Country team

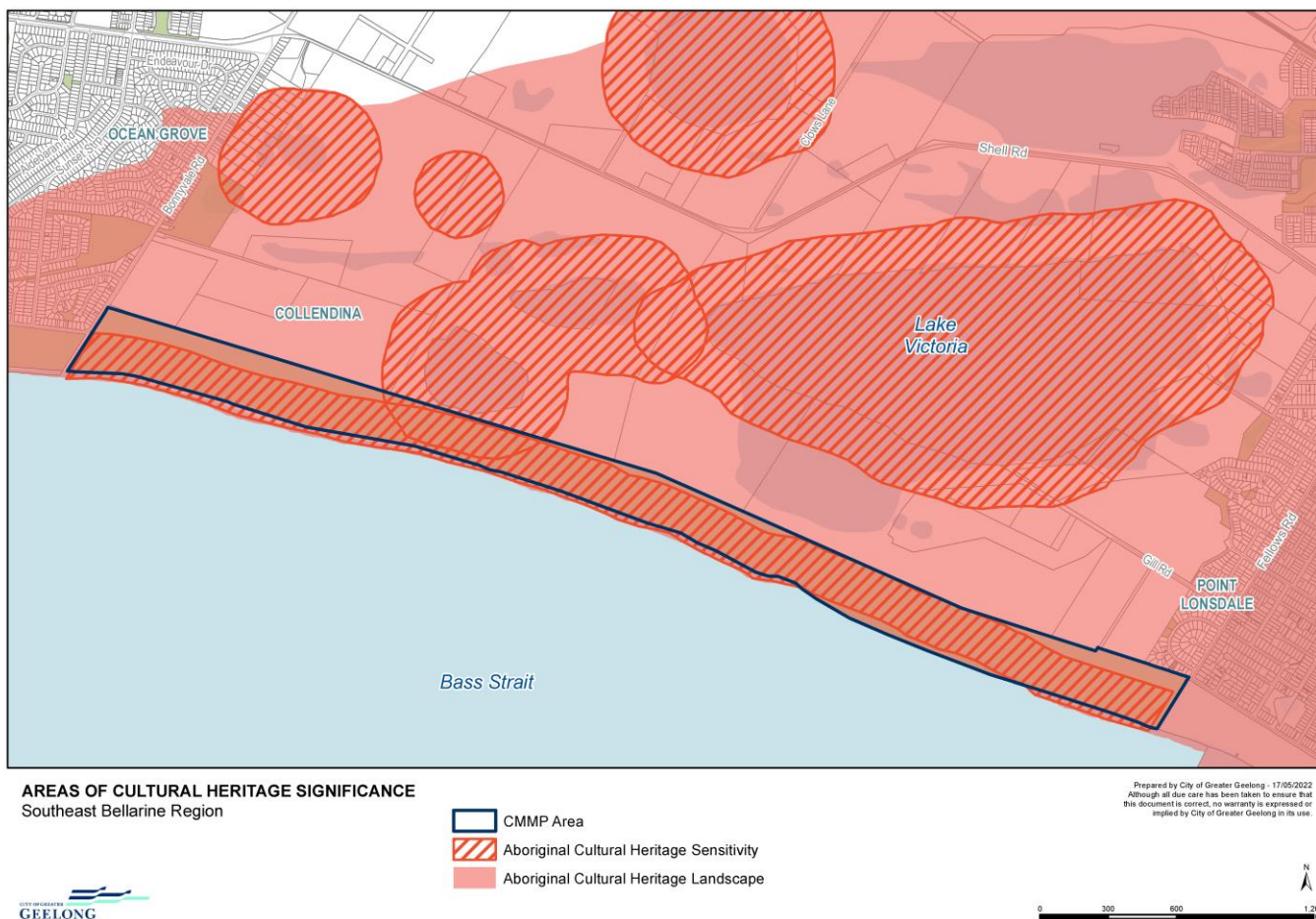


Figure 6: Areas of Aboriginal Cultural Heritage significance in Southeast Bellarine Coast region



2. PROTECT AND ENHANCE THE MARINE AND COASTAL ENVIRONMENT

Protect and enhance intrinsic values, goods and benefits of the marine and coastal environment

Natural features and landscapes

The Southeast Bellarine Coastal area brings together coastal wetlands, woodlands and a foreshore of sandy beaches, and an endemic marine environment. These diverse ecosystems help to sustain unique and important flora and fauna communities, including rare and threatened species, such as the Hooded Plover and migratory birds (Figure 7). The environmental values in the Southeast Bellarine Coast are highly regarded by the community, with the majority wanting this area to be protected and enhanced for nature.

The City developed their *Hooded Plover Conservation Action Plan 2019* to manage the preservation of this threatened species. This stretch of remote coastline supports breeding and foraging grounds for many resident and migratory birds, with increased population and climate change identified as the major threatening factors. Figure 7 outlines Hooded Plover use.

The coastal and marine zone supports resident and migratory shorebird species, Moonah woodland, nearshore reef and other marine communities. Management requires a holistic approach, from catchment to coast, to ensure the health of the entire Bellarine Peninsula Southern Coast, and broader Swan Bay catchment, is maintained.

The Southeast Bellarine Coast is close to the Port Phillip Bay (Western Shoreline) and Bellarine Peninsula Ramsar sites of Swan Bay and Lake Connemara. It is an important biolink and refuge site for bird and vegetation biodiversity across the region. The Lonsdale Lakes have been identified in the review of Ramsar wetlands across the region, due to its important role in supporting migratory bird populations, including those species that move between the coast and lakes.

A rich and diverse environment in close proximity to urban living is quite unique. Community and visitors are able to enjoy open space, natural beauty, and views across the bay and Southern Ocean. These areas are dynamic and constantly changing, and this must be recognised and reflected in how we manage and enjoy these areas into the future. There are opportunities to find integrated and innovative ways to protect and enhance these vulnerable communities and ecosystems, and to bring broader recognition of their importance (Table 3).

Cultural values and heritage sites

In addition to the extensive Wadawurrung history, more recent history has seen military use, shipwreck and salvage, as well as growth and evolution of the region through urban development and tourism sectors. The legacy of these cultural relics remain as heritage sites, along with historical stories and experiences. This history is valued by local residents and visitors to the Bellarine Peninsula, and it is important to find opportunities to share this knowledge with current and future generations. As a maritime area, these heritage sites can include shipwrecks and archaeological remains of early coastal settlements.

Value of marine and coastal Crown land

Marine and coastal areas are valued in a variety of ways. As well as enjoyment and recreation, these areas support carbon and nitrogen sequestration, and a healthy ecosystem supports coastal resilience and acts as a buffer from hazards. Some values are tangible, others more intangible.

Victoria's Crown land areas, including the marine environment, are intended for the benefit of all. Management requires coordination and balance to ensure use and enjoyment is sustainable, natural processes are respected, and broader impacts and connections to activities and networks in surrounding areas are considered.

Table 3: Values, issues and opportunities to protect and enhance the marine and coastal environment

Values	Issues	Opportunities
<ul style="list-style-type: none"> • Ecosystems and habitats including: <ul style="list-style-type: none"> - Bellarine Peninsula South Coast, area of State Significance - Cliff habitat - Sand beach - Intertidal surf zone - Intertidal rocky reef - Off-shore marine reef • Threatened fauna: <ul style="list-style-type: none"> - 1 nationally endangered - 11 state-listed - several internationally significant migratory and local shorebirds • Threatened flora: <ul style="list-style-type: none"> - 3 rare, 1 vulnerable species - 17 of regional significance - bush bird habit - one EVC Community vulnerable - one Flora-and-Fauna-Guarantee-listed community • Natural landscapes including: <ul style="list-style-type: none"> - Green space, scenery, aesthetic value - Remote and 'wild' - Fresh, clean air - Views to Port Phillip heads • Non-polluted, litter free environments • European heritage including Maritime history and Military heritage • Living heritage cultural sites and values • Access to enjoy and learn about the natural environment • Marine and coastal Crown land, including public access and use as a shared community resource 	<ul style="list-style-type: none"> • Increased visitation and climate change pressure on beach nesting bird breeding and foraging areas. • Impacts on fauna using both the dune and beach areas of the Southeast Bellarine Coast • Conflict with recreational use (for example, dogs off-leash in on-leash dog areas, illegal tracks) • Weeds and pest species • Illegal vegetation clearance • Nearby development, changing the character of the area • Noise pollution from motors (boats) • Waste management, litter, fishing waste, wildlife entanglements 	<ul style="list-style-type: none"> • Protect and enhance: <ul style="list-style-type: none"> - Native coastal vegetation - Monitoring of shore/bush birds and their habitat and identify further actions to support conservation - Marine habitat - Dune systems and buffers • Promote, communicate, and enforce regulations: <ul style="list-style-type: none"> - illegal vegetation clearing - zoning, such as conservation areas, fishing, dog controls and so on. • Promote and enhance interaction with, and education about, the natural environment and mitigation of threats • Protect and celebrate living cultural heritage and historic heritage values • Engage with other stakeholders (land managers, landholders, community groups, residents, tourists) for cross-jurisdiction collaboration and management • Consistent naming, messaging and signage across the entire Bellarine Peninsula South Coast • Increased protection for coastal Crown land • Lonsdale Lake Wildlife Reserve be recognised as a Ramsar site for increased biolink and environmental protection or the region

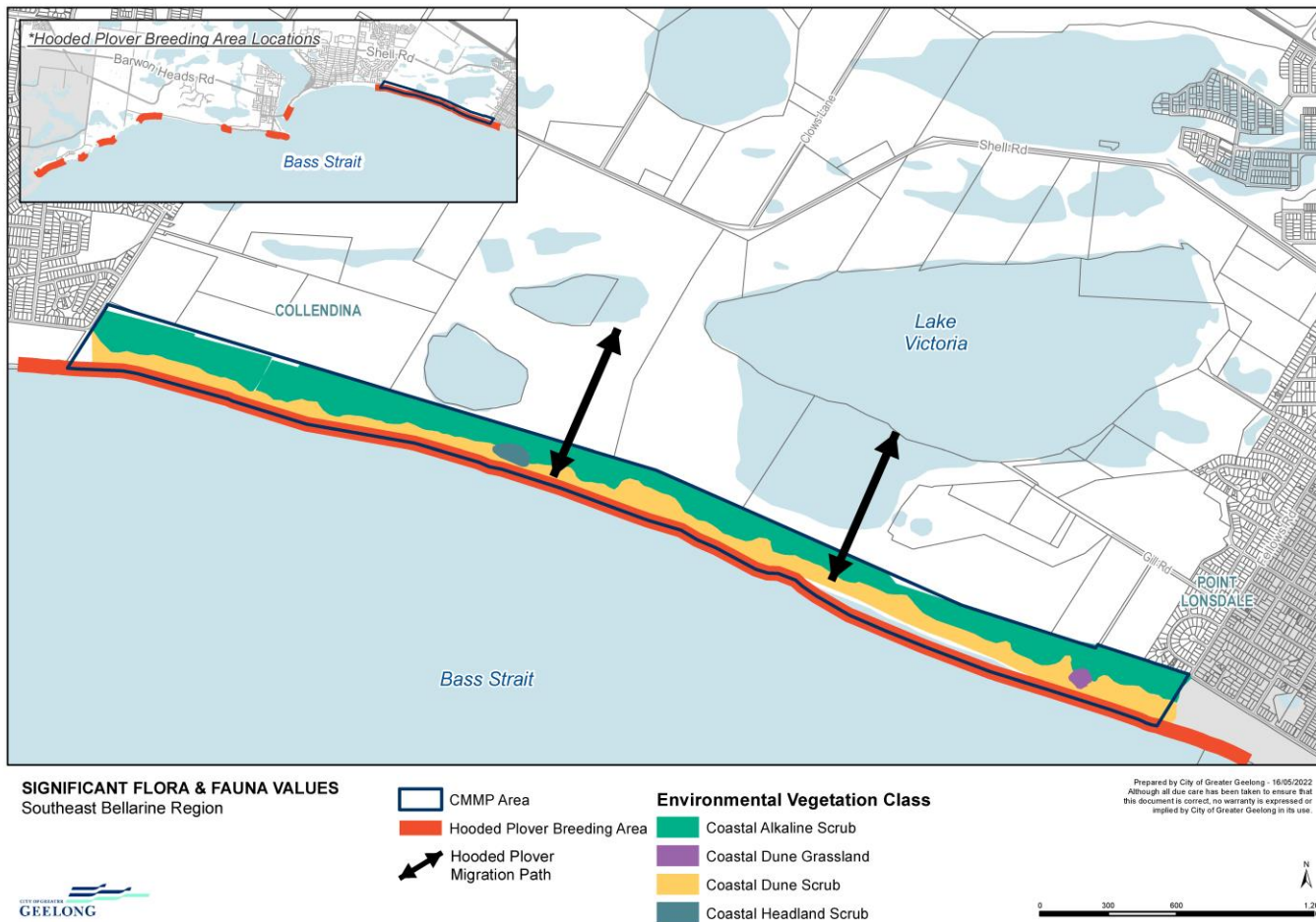


Figure 7: Significant fauna and flora values in Southeast Bellarine coast



3A. RESPECT NATURAL PROCESSES

Understand the dynamic natural processes in planning for and managing risks to people and assets.

3B. STRENGTHEN RESILIENCE TO CLIMATE CHANGE

Understand the current and future stressors from climate change and assess how well the marine and coastal environment can cope with and adapt to change and how that can be strengthened.

Proximity to the coast is one of the benefits of living in Greater Geelong and the Bellarine Peninsula. However, this means there is only a small buffer between land and sea. Southeast Bellarine Coast 4W–Collendina forms the central to eastern sector of the Bellarine Peninsula Southern Coast. It is a gently curving embayment approximately 5 kilometres in length that is bounded by the headlands of The Barwon Bluff in the west and Point Lonsdale in the east. The continuous dune limestone ridge (20 metres high) from Point Lonsdale to Ocean Grove, which underlies the reserve, has the profile of a coastal barrier with a broad crest (200-metres wide). The integrity of this barrier system is essential in protecting low-lying areas from coastal flooding in high tide and during storm tide events. These coastal hazards are likely to increase with rising sea levels and increasing storms.

The current coastal processes along the Victorian southern coast show very few sandy sections have been stable, or shown sustained accretion or advancement, in recent decades. The Southeast Bellarine Coast accumulated through blown sand dunes, which were piled up against and in front of the former sea cliff assisted by vegetation (including pioneer species that establish on new sand deposits and can withstand burial).

There are 18 substantial blow-outs along the backshore, ranging from less than 50 metres to over 200 metres in width, making up 12 per cent of the dune system surface area. Changes to vegetation retention, due to increased wave and wind action, erosional processes and increased anthropogenic impacts (Figure 9), can greatly influence the integrity of the dune face. Figures 12 and 13 indicate blowout eroded areas.

This is an ocean coast, subject to deflected ocean swell arriving predominantly from a southerly to south-westerly direction. Swell waves are amplified by local winds and the dominance of westerly winds, particularly during storms, results in a movement of water both eastwards and towards the coast. There are sectors of rocky shore platforms exposed at low tide outlined in Figure 10. This combination of swell and storm waves generates a long-term northeast sand drift towards the eastern Bellarine Peninsula coast and the entrance to Port Phillip Bay.

Climate change influences may see increased denudation of dunes. Sand shift exacerbation may gradually exhaust the beach, with the intertidal zone cut away to expose more rocky shore platforms. Figure 11 shows current intertidal reef habitat. Rising sea levels, storm surges and coastal erosion also threaten Wadawurrung living cultural heritage and historic heritage sites, many of which are within, or near, coastal reserves. Scouring of the dune toe also has implications for Hooded Plover nesting sites and juvenile feeding potential.

Urbanisation sees the coastal zone intersecting with assets and infrastructure – access points and other coastal structures. The legacy of past coastal management and use also presents a challenge. The surrounding landscape has been modified by European activities, including quarrying many of the shell beds and calcarenite ridges, draining and diverting of coastal wetlands behind the coastline, shoreline landscaping and other engineering works, with deliberate and accidental removal and/or introduction of plant species that impact on coastal landform processes.

Current management includes works to retain the expected coastal experience, which is highly valued by the community. It is imperative that ongoing safe access for passive recreational activities is maintained, modifying existing structures and landforms to withstand increased coastal impacts. We want to improve and enhance the foreshore areas and maintain the coastal barrier integrity to protect low-lying areas of the community on the Bellarine Peninsula, including private land and Point Lonsdale and Ocean Grove townships (Figure 8).

The *Greater Geelong Planning Scheme 2020* has been amended to ensure land subject to coastal hazards has been identified to help reduce risks to public safety and damage to properties. Improved understanding of potential coastal

hazard risk, opportunities for adaptation, and future planning and decision-making, will improve preparedness to respond and recover following hazard events (such as flooding in adjacent areas and erosion).

In addition, our *Sustainability Framework 2020*, *Climate Change Response Plan 2021–30* and *Environment Strategy 2020–30* detail the actions we'll take to support coordinated and collective action to achieve net zero community emissions and increase the resilience of our region to the impacts of climate change. Values, issues and opportunities are listed in Table 4.

Table 4: Values, issues and opportunities to respect natural processes and strengthen resilience to climate change

Values	Issues	Opportunities
<ul style="list-style-type: none"> • Natural coastal processes including the creation/ maintenance of natural areas – wetlands, sediment transport, beaches and so on • Natural protection in dunes, and rock outcrops from coastal hazards • Coastal green breaks providing cool areas and reducing urban heat • Disaster management to ensure human health and safety • Public and private property asset protection • Engineering and coastal management initiatives to strengthen resilience of foreshore • Integration of coastal hazard and climate change planning into City processes 	<ul style="list-style-type: none"> • Sea level rise • Coastal flooding impacting on surrounding environmental, urban and infrastructure values • Erosion impacting on values • Potential Increase in severity, frequency and magnitude of storm events • Changes in the beach and nearshore sediment profile resulting from storm events • Climate change impacting on changed wave regime that persistently removes sand from beaches, transferring it alongshore and offshore, leading to recession of foredunes • Limited monitoring and local data on sand movement and wave climate • Management processes – reviewing and updating coastal hazard predictions incorporating the most recent climate science 	<ul style="list-style-type: none"> • Strengthen understanding of local coastal processes, and emerging coastal hazards • Increase community awareness and understanding of changing climate and the dynamic coastal and marine environment • Assess impacts of climate change and beach profile on Hooded Plover and beach-nesting breeding success and undertake research into methods for mitigating scouring impacts on nesting sites and juvenile feeding potential • Increase adaptation measures as required, including: embed consideration of coastal hazards into decision making and design, integrate the latest hazard mapping into disaster management planning, upgrade infrastructure to accommodate or withstand changing conditions, promote and integrate innovative management such as nature-based adaptation, bioengineering, living seawalls • Identify adjacent areas for suitable environmental offset and refuge to mitigate the impacts of climate change • Respect, understand and work with sediment shift and natural coastal processes

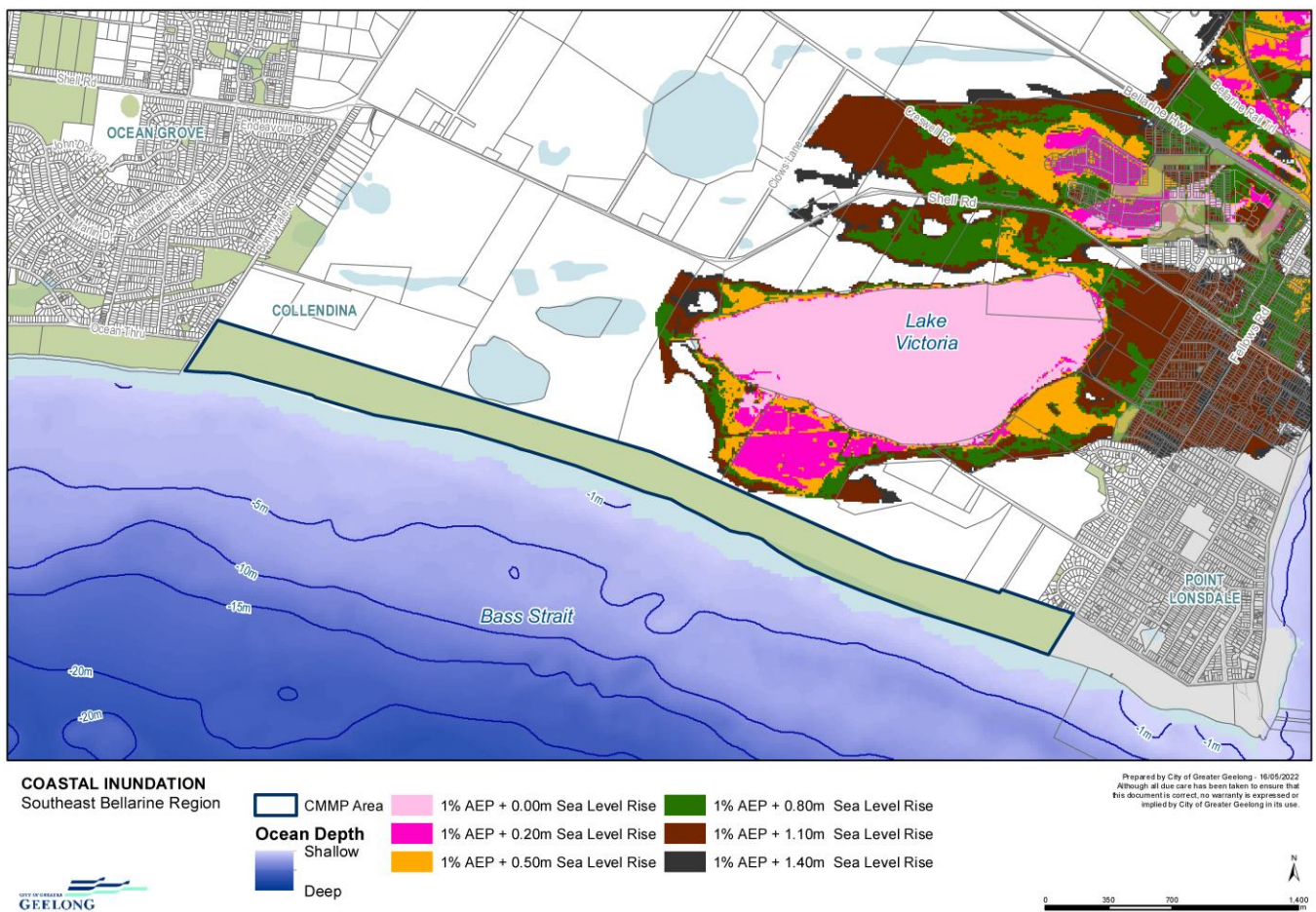


Figure 8: Bathymetry and Sea Level Rise predictions of the Southeast Bellarine Coast region



Figure 9: Foot traffic showing deviation from track erosion at 6W access



Figure 10: Southeast Bellarine Coast with blowout erosion and intertidal reef mapping



Figure 11: Southeast Bellarine Coast intertidal reef habitat



Figure 12: Trough Blowout E



Figure 13: A - Wall Blowout G 1990's showing exposed ridgeline, B&C - 2022 showing recovery



4. USE AND DEVELOP SUSTAINABLY

Consider the impacts and benefits of existing and new use and development on the environment, other users, and the prosperity of future generations.

As an early colonisation settlement site in Victoria, our region has a long history of development in the coastal zone. Residential and commercial buildings have been constructed along the foreshore overlooking the Southern Ocean in areas adjacent to the Southeast Bellarine Coast, include Ocean Grove and Point Lonsdale. Both urban areas have vibrant built central business districts, retail and industry, along with strong community and tourism values.

Neighbourhood character and community feel is considered very important to residents and visitors, as is the green break which is highly valued for its ecosystem services, tourism, and lifestyle benefits. Continued population growth, housing demands, and limited available space potentially threaten these natural values. Planning and other controls need to ensure growth is carefully managed in a sustainable way.

This plan coincides with the delivery by the Department of Environment, Land, Water and Planning's Distinctive Area and Landscapes (DAL) project. The DAL's *Statement of Planning Policy 2022* aims to conserve and enhance the significant landscapes, environment, biodiversity and cultural heritage of the region. In addition, township boundaries are established to mitigate urban expansion into green breaks, preserving natural coastline areas.

Our *Settlement Strategy 2020* and *Sustainability Framework 2020* will continue to shape our thinking about how to create the best outcomes for people, environment and the economy. Our *Social Infrastructure Plan – Generation One 2020–2023* will also influence the way we assess the needs of our community and invest in community places, spaces and services. Table 5 outlines the values, issues and opportunities to use and develop sustainably.

Marine and coastal industries

The *Greater Geelong Planning Scheme* and *Settlement Strategy 2020* recognise the green break, landscape and environmental significance of the area. Much of this land; both the coastal Crown land reserve and adjoining private land, is well recognised for conservation importance and has been protected through appropriate zoning and overlays. (see Figure 14). There is limited capacity for industry development without significantly impacting on the natural and recreational values of this landscape. Historical extractive industries remain, with a working quarry and shell grit merchant on the private land behind this coastal dune system. However, these have a limited lifespan. While there is a historical state extractive overlay over this land (recognising the natural resources), the conservation and cultural values of this landscape would mean future extractive industries would unlikely be permitted.

Recreation and tourism

Residents and visitors enjoy interacting with nature during passive recreational activities. These include walking, running, dog walking, swimming, surfing, fishing, birdwatching and boating. The Southeast Bellarine Coast is a place for people to relax, connect with nature and enjoy the environment.

The City currently own, manage and maintain over 1,700 hectares of open space and \$85 million worth of sport and recreation facilities and assets, that are utilised by approximately 300 clubs and community groups. Hospitality and accommodation adjacent to the Crown land foreshore includes the Lonsdale Links Golf Course and Club House, Ocean Grove Hotel, Surfside Ocean Grove Motel and Cabins, Collendina Caravan Park and The Lon Retreat which provide accommodation and social facilities. Our *Open Space: Social Infrastructure Plan Generation One 2020–2023* will guide us to protect and provide one of the communities most valued assets: an open space network that is fit-for-purpose, sustainable, accessible and safe for all residents and visitors to enjoy.

Greater Geelong and Bellarine Tourism Development Plan 2019–22 found the Greater Geelong and the Bellarine region attracted 5.8 million visitors in 2018, generating \$2.2 billion and 11,264 jobs. The Bellarine Peninsula is a very popular destination for tourists and locals with the water-based assets of the region acting as a key motivator for visitation, particularly in the peak summer season. The region also has primary strengths in food and beverage, as well as arts and culture. Geelong is also the only city in Australia that has been designated as a City of Design by the UNESCO

Creative Cities Network. As such, there is an opportunity to increase off-peak events and activities to promote visitation year-round.

South Bellarine's key strengths lend themselves well to nature-based tourism, including the ocean beaches to the south, the Barwon River and Lake Connewarre. Investment into these natural assets, including master planning and infrastructure development, are a significant tourism growth opportunity for the region.

There is limited commercial guestroom accommodation in Bellarine North and Bellarine South. Reinvestment in contemporary accommodation for visitors is a key opportunity, as is the development of eco-accommodation. The private land inland of the Southeast Bellarine Coast is well positioned for eco-accommodation opportunities, with passive recreation and low-density eco-tourism prospects.

Buildings, structures, and access

With a long maritime history, there many structures located throughout the City of Greater Geelong's coastal and marine zone. This includes wharfs, piers, jetties and boat ramps, along with cafes, recreation clubs and other facilities. There are also various coastal structures – seawalls, rock revetments and groynes that influence how people and the environment interact with the coast. These facilities are located outside of this Coastal and Marine Management Plan.

The Southeast Bellarine Coast structures only include three usage sections:

Western Section: two formalised beach access points for visitor use that are managed by the City – 5W and 6W. The area has high visitation numbers from Ocean Grove residents, Collendina Caravan Park, Surfside Ocean Grove Motel and Cabins and visitors. The City manages the land adjacent to 6W with access via a road leading to the Collendina Caravan Park and ample carparking. The 5W access is also a public access point, used by accommodation clientele, residents and visitors. This walkway is only via pedestrian access.

Middles Section: remote and land-locked by private land, which contains significant vegetation and a biolink from foreshore through to the Lonsdale Lake system.

Eastern Section: There is a formal access point at the Point Lonsdale end of the reserve at 4W, managed by the Borough of Queenscliffe, with carparking at the end of Fellows Rd. In addition, a less-formal access point branches off this track, to the west, managed by the City, which is mainly utilised by residents living adjacent to the reserve.

These community access points feature fenced pathways and wooden staircases to provide safe access down the steep dune foreshore, protecting vegetated areas and reducing erosion from foot traffic on the dunes. There is an opportunity for improved safe pedestrian connection between 7W Barwon Coast access to the 6W City access via Bonnyvale Rd.

Table 5: Values, issues and opportunities to use and develop sustainability

Values	Issues	Opportunities
<ul style="list-style-type: none"> • Maintenance and pristine environment of beaches/public access • Accessible - close to urban fringes • Atmosphere and character – peaceful, family friendly, safe, 'village' feel • Diverse and multicultural including strong Aboriginal heritage • Balance of 'passive' and 'active' areas for recreation across the region • Areas adjacent that provide economic input and jobs for the region 	<ul style="list-style-type: none"> • Growing resident population and increased tourist numbers • Barriers to access including: <ul style="list-style-type: none"> – limited access points – physical barriers and limitations – limited car parking or other transport provisions – social vulnerability impacting on access for all community members 	<ul style="list-style-type: none"> • Strengthen planning and controls, including to review and update overlays, improve communication and consistent signage along coast to help enforce controls, identify and coordinate improvement works • Promote fair use of coastal and marine areas, including to review existing dog controls, communication, and enforcement • Enhance the user experience to maintain and improve coastal access

Values	Issues	Opportunities
<ul style="list-style-type: none"> • Current zoning recognises environmental and conservation significance 	<ul style="list-style-type: none"> • Conflict with beach users – dog walkers and hooded plover conservation volunteers – safety issue • Limited toilets facilities • Limited structures to provide shade • Tree vandalism concentrated around urban fringes • Litter and other waste management (such as dog poo) • Historical development and use • No formal connection between 6W and 7W on the landward side of the reserve. 	<p>facilities, increase educational and interpretive signage, promoting connectivity to the environment and cultural values</p> <ul style="list-style-type: none"> • Apply the new siting and design guidelines for structures on the Victorian coast to ensure integration into the coastal landscape and strengthen resilience to climate change • Consider business, accommodation and tourism opportunities in areas adjacent to Crown land, while retaining green break landscape character • Investigate formal, safe pedestrian access between 6W and 7W to improve use between these two walkways

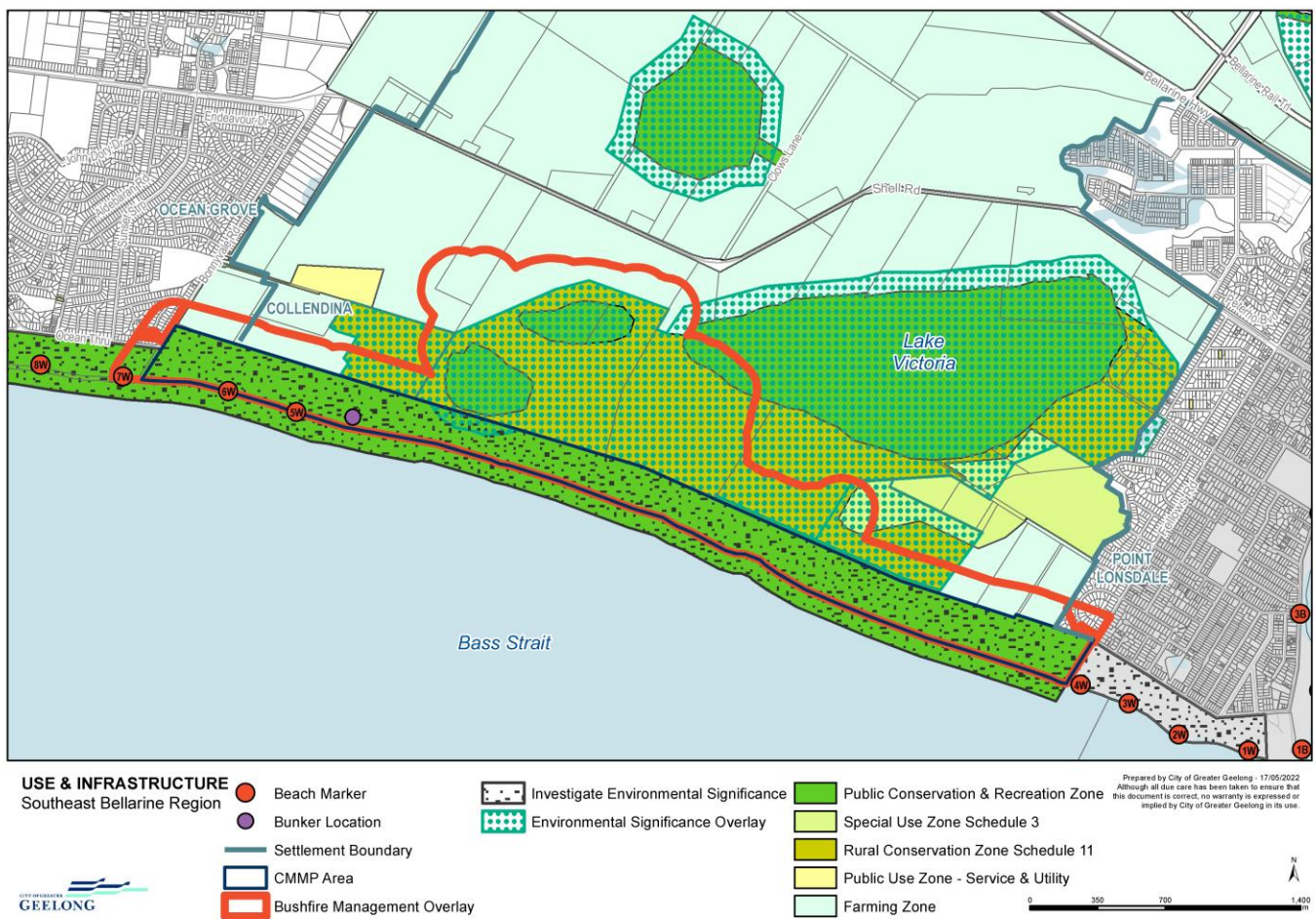


Figure 14: Planning zones and land use for the Southeast Bellarine Coast region

5. PROMOTE STEWARDSHIP AND COLLABORATIVE MANAGEMENT

Empower the community to play a part in the care of natural marine and coastal places, to help to enhance their resilience.

The Southeast Bellarine Coast area between 4W and the Collendina foreshore, as well as its facilities, are the responsibility of the City on behalf of the Victorian Government. Aligned to the *Paleert Tjaara Dja: Healthy Country Plan*, Wadawurrung People's needs, aspirations and experiences should be embedded into the day-to-day management of our coastal and marine areas.

Managing the Crown land coastal landscape discretely and separately to the adjacent landscapes does not allow for a holistic management approach. The development of the Project Steering Group, which includes eight land managers (see Acknowledgements on page 4) will address this for the purposes of this plan, as well as future landscape scale precinct Master Plan. Landholders who manage the private land adjacent to the foreshore and form part of the biolink, are vitally important in the continued protection and enhancement of this landscape. Table 6 outlines the values, issues and opportunities to promote stewardship and collaborative management.

The Greater Geelong community is already taking an active role in environmental stewardship and caring for the marine and coastal environment. Fourteen community groups have been involved in developing this plan through the Community Reference Group (see Acknowledgements on page 4). These include 'friends of' and environment groups, Coastcare and Landcare, as well as community and civic associations. There is an opportunity for greater inclusion of our community and visitors in the way we approach coastal and marine management.

Expanding the reach and fostering further interest in the care of marine and coastal zones could be achieved through improved awareness and engagement opportunities for different interest groups. Building knowledge of our marine and coastal environment across the region is currently supported by research and citizen science monitoring programs such as: BirdLife (Hooded Plover), Backyard Bird Count, annual bird surveys, the Geelong Field Naturalists (flora and fauna surveys), Orange-bellied Parrot Recovery Group Bellarine (OBP surveys) and state agencies (SeaSearch, Waterwatch, Estuarywatch and Litterwatch).

The nearby Queenscliff Marine Freshwater Discovery Centre provides environmental education to residents, Victorian and international students, and fisheries research. The proposed Sparrovale Nubitiyooree Wetlands Interpretation Centre, located at the gateway to the Bellarine Peninsula, will aim to increase environmental stewardship, support education, and participation, and foster respect for the natural environment. Partnership projects with the Wadawurrung People, tourism operators and other stakeholders could also encourage increased interest, knowledge sharing and help to build capacity in coastal and marine management.

Table 6: Values, issues and opportunities to promote stewardship and collaborative management

Values	Issues	Opportunities
<ul style="list-style-type: none"> An active and engaged community already taking a stewardship role Numerous enthusiastic community groups with Community Representative Group Established Project Steering Group collaboration on CMMP development Established Landholder Group to provide input and collaborative actions in the following biolink Master Plan 	<ul style="list-style-type: none"> Numerous agency stakeholders in adjoining landscapes – management disconnection Insufficient or ineffective stakeholder collaboration Public perception and information gaps around asset ownership, usage, and responsibilities Uncertainty around beginning and end of management jurisdiction and roles, particularly in the marine environment 	<ul style="list-style-type: none"> Incorporate Wadawurrung knowledge into marine and coastal management, including knowledge sharing and partnership projects Collaborate and coordinate with relevant management agencies, stakeholders in holistic landscape management Promote and support community groups and on-ground action

Values	Issues	Opportunities
<ul style="list-style-type: none"> • Integration of the <i>Paleert Tjaara Dja</i>: Owners Healthy Country Plan 2020-30 • Support for natural environmental education and engagement activities (noted in Biodiversity and Environment Strategies) – for planting, weeding days and educational tours • Collaboration with universities – research and citizen science programs • Environmental education centres close-by, such as the Queenscliff Marine Freshwater Discovery Centre 	<ul style="list-style-type: none"> • Certain demographics lacking in community connection and stewardship • Limited community understanding about processes, permits and approvals for works in foreshore area • Conflicts between user groups • Disconnect with Wadawurrung People's engagement 	<ul style="list-style-type: none"> • Increase education and awareness of coastal and marine management and cultural connections • Develop targeted, cross-jurisdiction signage to promote, sustainable use of coastal and marine areas • Provide alternative engagement methods such as technology-based approaches – for example, enviro videos, live streams and workshops

Outcomes

Outcomes describe what we want coastal and marine management to achieve. These outcomes have been developed in line with the *Marine and Coastal Act 2018*, policy objectives and are based on feedback from the community, land management and stakeholder groups. They also aim to reflect the values, issues and opportunities.

The outcomes have guided the development of suitable actions, ensuring that any initiatives or proposed works are in keeping with our broader coastal and marine management vision.

The outcomes are to act as overarching principles that should be considered for any works, initiatives, decision making or planning for the management of coastal and marine areas. They should be used to determine the appropriateness of future works or management actions.

OBJECTIVES				
1. Acknowledge Traditional Owners' rights, aspirations & knowledge	2. Protect & enhance the marine & coastal environment	3a. Respect natural processes 3b. Strengthen resilience to climate change	4. Use and develop sustainably	5. Promote stewardship and collaborative management
OUTCOMES				
<ul style="list-style-type: none"> Wadawurrung People supported to connect with their land and Sea Country Wadawurrung aspirations and <i>Paleert Tjaara Dja: Healthy Country Plan</i> embedded into collaborative decision making, planning and management Two-way knowledge and capacity building is promoted, with effective working relationships and a shared understanding of Wadawurrung People, and other marine and coastal land managers The coastal experience is enriched for all through shared 	<ul style="list-style-type: none"> Coastal and marine ecosystems and habitats are protected and enhanced Biodiversity and habitat links are improved, providing migration and movement across the landscape Water quality and regime is improved through integrated water management, including urban runoff People feel increased connection to the environment Views, seascapes and natural aesthetics are protected Significant cultural and heritage values 	<ul style="list-style-type: none"> Understanding of the local coastal process and emerging coastal hazards is improved Consideration of coastal hazard is embedded into decision making and design. Innovative and adaptive management of coastal hazard is promoted. Internal and external capacity is built to improve people's ability to manage dynamic coastal and marine processes. Updated knowledge is integrated into disaster plan management to ensure increased resilience Resilience is built through upgrades, 	<ul style="list-style-type: none"> Growth, development and use of marine and coastal environment is environmentally, socially and economically sustainable Planning and development controls are utilised to maintain non-urban breaks, preserving the character of the coastlines a desirable place to live, work, stay and play Can cope with and adapt to change Recreational zoning is updated, enforced and communicated to ensure a balance between users and environmental values The recreational and tourism experience is 	<ul style="list-style-type: none"> Roles and responsibilities relevant stakeholders are defined with accountability and empowerment for action. Coastal and marine management is inclusive, transparent and holistic, with increased stewardship and collaboration between stakeholders The City, other agencies and the community have greater capacity to care for, protect and enhance the health of the coastal and marine environment The most current data and information,

OBJECTIVES				
cultural heritage through naming of place and signage	<p>are protected and celebrated</p> <ul style="list-style-type: none"> • Management of the natural environment occurs in a sustainable manner with respected zoning, increased education and engagement 	<p>modifications or relocation that appropriately adapt to increasing coastal hazards and character conditions</p> <ul style="list-style-type: none"> • Natural buffers, including dune systems, coastal wetlands are protected and enhanced to address increasing coastal impacts 	<p>enhanced through strategically located and designated infrastructure and attractions outside of sensitive environment areas</p> <ul style="list-style-type: none"> • Minimise impacts on marine and coastal environments in development of business and commercial area • Access to the marine and coastal zone occurs in a safe and accessible manner, with regards to the natural environment and cultural values 	<p>along with Traditional Owner knowledge are incorporated into evidence-based planning and management of the marine and coastal zone</p>

Actions

A suite of actions has been developed to guide investment and priorities over the next ten years and are to be reviewed and revised after five years. Actions are how we will achieve the outcomes.

Extensive engagement and wide-spread stakeholder input have been vital in informing the key directions and priorities of the Plan to ensure alignment to community desires for the management of this coastal Crown land. The outcomes and implementation actions are positioned to mitigate the threats and challenges raised during the consultation process, to ensure the values of the Southeast Bellarine Coast are protected and enhanced.

Each action is ranked by priority:

- **Short-term actions** – should commence immediately (within two years or are already underway) and are important to implement as soon as possible.
- **Medium-term actions** – should be initiated within three to five years during implementation of the plan.
- **Long-term actions** – should be commenced in six to ten years, however preliminary work and consultation may occur sooner if opportunities arise.
- **Ongoing actions** – part of the City's ongoing work in a 'business as usual' capacity. Priorities may shift throughout the life of the plan, depending on factors such as funding, new research, collaboration opportunities with other projects and changing conditions (for example, an extreme weather event).

Actions have been developed to achieve the outcomes and objectives of this plan. The City has committed to the actions as presented below, coloured under the objective themes, with key deliverables identified.

These actions will be also integrated into the *Southeast Bellarine Biolink Master Plan* along with additional actions in order to support the broader environment in this region. The Master Plan overview is provided in the following section.

Objective	Actions	Priority
Acknowledge Traditional Owners' rights, aspirations & knowledge	A Investigate opportunities to develop partnership projects with the Wadawurrung Traditional Owners Aboriginal Corporation and their Caring for Country team, and undertake Aboriginal Cultural Heritage Land Management Agreements or similar.	Short-term by 2026 Ongoing
	B Examine and implement ways to manage and protect cultural values within the coastal and marine zone in accordance with the <i>Paleert Tjaara Dja: Healthy Country Plan</i> and state legislation (inc. <i>Aboriginal Heritage Act 2006</i> , <i>Heritage Act 2017</i> , <i>Underwater Cultural Heritage Act 2018</i>).	Short-term by 2026
	C Promote Wadawurrung Language and stories through naming of Country, connection and consistency along the entire Bellarine Peninsula Southern Coast.	Short-term by 2026 Ongoing
	D Design and install a suite of signage focused on increased community awareness of the cultural, natural and heritage values of the coastal and marine zones in collaboration with Wadawurrung People, Land Management Groups, Community Reference Group and Landholder Group.	Short-term by 2026

Objective	Actions		Priority
Protect and enhance the marine and coastal environment	A	Contain and reduce cover of priority invasive plant species. Continue to use bushland regeneration techniques to encourage natural recruitment of local endemic species and where applicable revegetate rare flora.	Ongoing Annually
	B	Continue to monitor the seasonal population and community composition of fauna and flora surveys to ascertain biodiversity values and effectiveness of pest plant and animal controls.	Ongoing Annual program
	C	Support actions in the state and local biodiversity strategies to improve the coastal and marine environment, including using planning controls to retain and/or create biodiversity links.	As updated
	D	Deliver the Hooded Plover protection program, including fencing nesting sites, monitoring and awareness activities. Review our <i>Hooded Plover Action Plan</i> . Reassess dog controls to ensure the protection of Hooded Plover and other beach dwelling fauna. Deliver Responsible Pet Ownership awareness and education activities. Promote, communicate and enforce regulations. Monitor impacts of climate change and increased storm activity on success of breeding.	Ongoing Annual program
	E	Support management of wildlife on beaches by reporting wildlife sightings to responsible authorities, providing first responder services for marine wildlife including signage, temporary fencing and exclusion zones.	Ongoing As required
	F	Support the recognition of adjacent Lonsdale Lake Wildlife Reserve as a Ramsar site in the current boundary review for biolink connection.	Short-term by 2026
	G	Promote and enhance community interaction with, and education about the natural environment and threats such as erosion, litter and green waste dumping.	Ongoing
	H	Undertake marine ecosystem mapping through State Government support and programs.	As updated
Respect natural process Strengthen resilience to climate change	A	In-line with the <i>Victorian's Resilient Coast – Adapting for 2100+</i> state-wide approach to coastal hazard risk management and approach to coastal adaptation, undertake planning to assess future coastal vulnerability and associated risks.	Medium-term by 2029

Objective	Actions	Priority
	Provide economic risk assessment, rationale for action and specify adaptation responses/pathways.	
	B Ensuring ageing infrastructure is effectively maintained, upgraded or removed according to economic cost-benefit, risk assessment, and its role in increasing the resilience of the area/region.	Long-term by 2034
	C Increase community awareness and understanding of changing climate and the dynamic coastal and marine environment through knowledge-building activities. Improve communication and consistent signage along coast to help enforce controls.	Medium-term by 2029
	D Integrate innovative management of coastal areas using nature-based adaptation to work with sediment supply and natural coastal processes.	Long-term by 2034
	E Identify adjacent areas for suitable environmental offset and refuge to accommodate the impacts of climate change.	Short-term by 2026 Ongoing
	F Review and update overlays, mitigate encroachment from neighbouring private landholders, mapping, signage and information in collaboration with stakeholder agencies and Wadawurrung People.	Short-term by 2026 Ongoing
	G Review and incorporate coastal hazard adaptation and climate objectives/outcomes from current state projects in asset and land use management, planning scheme/zoning and City decision making (includes Marine and Coastal Strategy and Our Coast).	As updated
Use and develop sustainably	A Investigate opportunities for increased access and connectivity between the coastal townships, outside of the Southeast Bellarine Coast (for example, pathways and cycling trails).	Short-term by 2026
	B Expand monitoring to understand and quantify usage, visitation and demand, using this to inform strategic management of marine and coastal areas.	Medium-term by 2029
	C Implement effective usage of structures in accordance with <i>Siting and Design Guidelines for Structures on the Victorian Coast 2020</i> .	Long-term by 2034
	D Monitor blow out erosion and deliver sand dune protection activities such as erosion protection and management of human impacts (for example, fencing, signage, brush-matting and education).	Ongoing As required
	E Monitor and apply the sustainable practices used in the organisation, in accordance with the City's <i>Climate Change Response Plan</i> .	Short-term by 2026 Ongoing

Objective	Actions		Priority
	F	Undertake an audit of signage across the Bellarine Peninsula Southern Coast (messaging, compliance with standards, style, location, condition). Develop and implement a signage style guide and signage plan in collaboration with agency partners.	Short-term by 2026
	G	Review the coastal crown land classification to increase levels of protection.	Medium-term by 2029
	H	Investigate formal, safe pedestrian access between 6W and 7W to improve use between these two walkways.	Short-term by 2026
Promote stewardship and collaboration management	A	Strategically invest in resources for community stewardship programs and partnerships in response to increasing demand. Invest in knowledge sharing and education programs to generate interest and awareness of marine and coastal environments, hazards, and adaptation.	Ongoing
	B	Develop a communication and engagement plan for community, landholder and agency involvement in the marine and coastal management.	Short-term by 2026
	C	Strengthen partnerships and advocacy with stakeholders to raise awareness, promoting and supporting shared care of coastal and marine areas. Identify opportunities for collaboration, funding streams and efficiencies in management.	Ongoing
	D	Partner with neighbouring land managers and landholders to implement broader scale climate changes response and cross-jurisdiction management through a Southeast Bellarine Biolink Master Plan.	Short-term by 2026 Ongoing
	E	Develop a marine and coastal citizen science program/s, which includes monitoring and reporting on coastal hazards and environmental changes (Snap Send Solve). This may be in partnership with community groups, universities and so on.	Medium-term by 2029

Resource needs

To support the objectives, we've set for this plan, we will be relying on funding provided by the City, as well as collaborative project funding attracted by the Project Steering Group.

Financial support from State Government will be required to fully realise the vision. For sustainable marine and coastal management, additional resources will be needed to:

- support quality Wadawurrung engagement to increase resourcing for marine and coastal management and partnerships
- support research partnerships and modelling in order provide gaps in knowledge for marine and coastal management
- acquire adjacent land for increased habitat connections, biodiversity outcomes and refuge areas in response to climate change
- incentivise for private landowners in adjacent areas to protect habitats – for example, fencing for stock exclusion, blue/teal carbon (carbon/nitrogen credits), and conservation habitats in coastal areas
- provide access for all abilities infrastructure
- assess coastal hazards and erosion and implement corrective actions
- assess impacts of climate change and beach profile on Hooded Plover and beach-nesting bird breeding success and undertake research into methods for mitigating scouring impacts on nesting sites and juvenile feeding potential
- carry out near-shore reef and marine habitat mapping.

Southeast Bellarine Biolink Master Plan

The *Southeast Bellarine Biolink Master Plan* (being drafted) is a detailed precinct plan including the natural foreshore areas of the Bellarine Peninsula Southern Coast (including this Coastal and Marine Management Plan area) and biolink of the Lonsdale Lakes Wildlife Reserve and surrounding private land.

The Master Plan has been developed with extensive community engagement and encompasses Crown land areas managed under Coastal and Marine Management Plans including the City, Barwon Coast and the Borough of Queenscliffe as well as the Lonsdale Lakes Wildlife Reserve, managed by Parks Victoria (see Figure 15).

PRIORITY VALUES

- Vegetation and habitat for wildlife
- Wadawurrung living values and connection to Country
- Natural, quieter, and uncrowded beach
- Continued provision for passive recreation in designated areas whilst monitoring usage patterns and implementing actions to further protect natural values
- Threatened Temperate Coastal Saltmarsh and Moonah Woodland Communities
- Hooded Plover and beach-nesting bird breeding areas, Orange-bellied Parrot habitat and migratory bird refuge and feeding grounds

PRECINCT MASTER PLAN PRIORITIES

1. Manage informal pedestrian access, dune intrusion and trampling of vegetation.
2. Recognise Wadawurrung living cultural heritage through renaming, signage and co-management partnership
3. Maintain and provide for passive recreation where it does not impact upon natural values.
4. Manage informal dune intrusion at the front of the dunes by beach users and dogs.

This precinct is backed by a wide dune formation with extensive tracts of locally native vegetation providing important habitat for wildlife. The precinct covers the 140 hectares of the Southeast Bellarine Coast and adjoins Barwon-Coast-managed natural foreshore to 13W (west) and the Borough-of-Queenscliffe-managed natural foreshore to Port Phillip heads (east). The beach allows for passive recreation, providing a feeling of remoteness from nearby residential development. An increase in beach usage in this precinct has been observed in recent years and this will need to be monitored to assess whether further action is required. See Figure 15 below for a map of the Southeast Bellarine Biolink Master Plan precinct.

The role of the precinct is primarily protection and enhancement of natural values. An active group of volunteers from numerous community groups, such as Friend of Buckley Park, Ocean Grove Coastcare and Swan Bay Environment Association, support the City's environment programs. Maintaining public access while managing dune intrusion will be considered during the master planning process for this precinct.

This beach zone provides space for walking with dogs off leash at some times of the year (provided they are under effective control) and on leash during Hooded Plover breeding times. Responsible dog ownership and monitoring is needed to minimise potential impact on conservation values. A strategic review of dog controls will aim to simplify regulations and increase enforcement. This is aligned with community input and the motivation for prioritising protection and enhancement of this area.

SOUTHEAST BELLARINE BIOLINK – LAND OWNERSHIP / MANAGEMENT

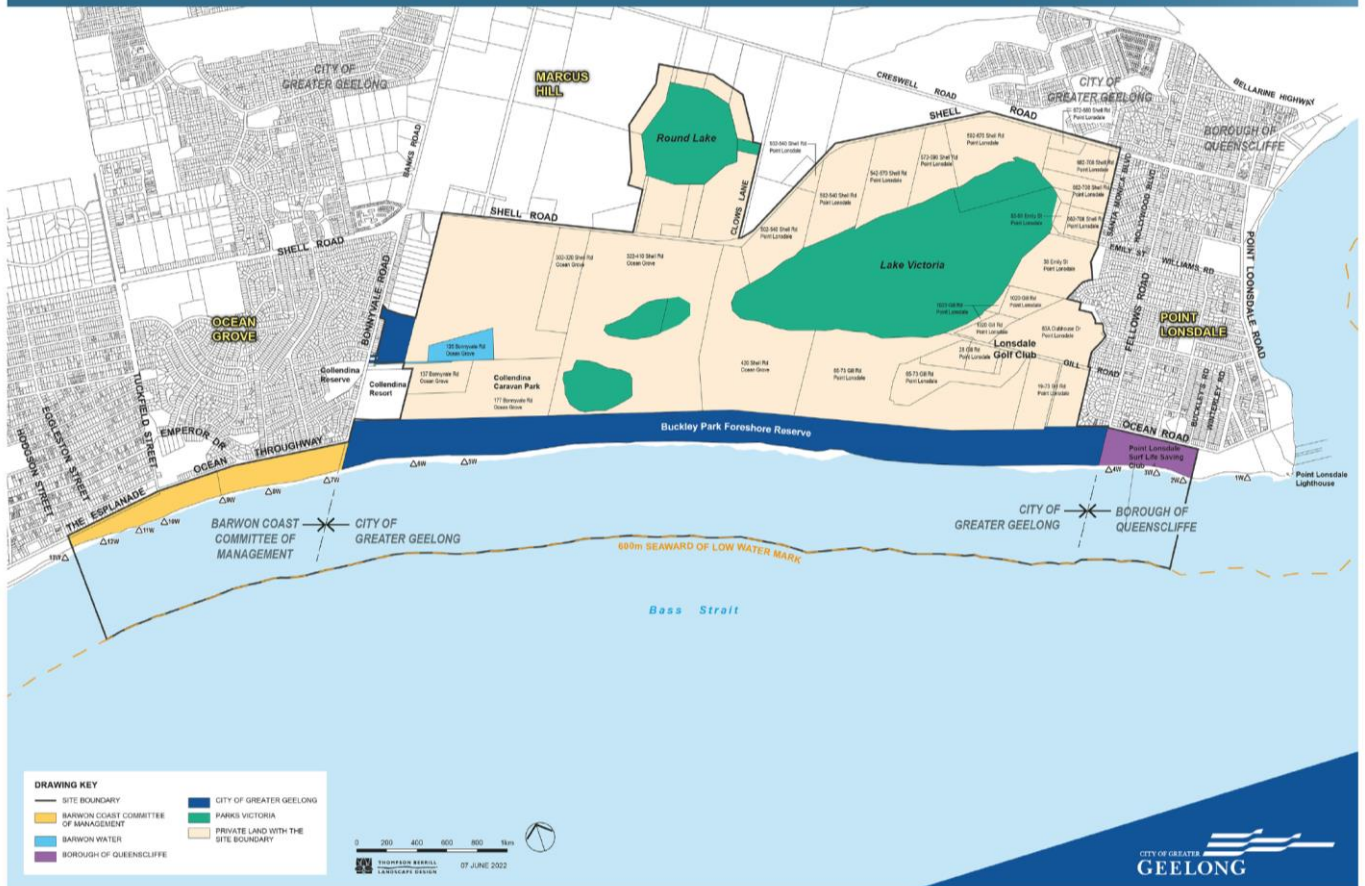


Figure 15: Map of area covered under the Southeast Bellarine Biolink Master Plan (which includes the Southeast Bellarine Coast – Coastal and Marine Management Plan area)

Implementation

This plan sets the strategic direction and actions for implementation over the period 2023–33, with many of the recommendations to take place in the first five years of the plan.

The action plan will be adaptive, allowing responses to changing conditions, new opportunities or updated technical information. This section provides an overview of implementation arrangements. Implementation includes aspects of monitoring, evaluation, review, and improvement. An overview of the next steps in implementation and the adaptive management framework is provided in Figure 16 and Table 7.

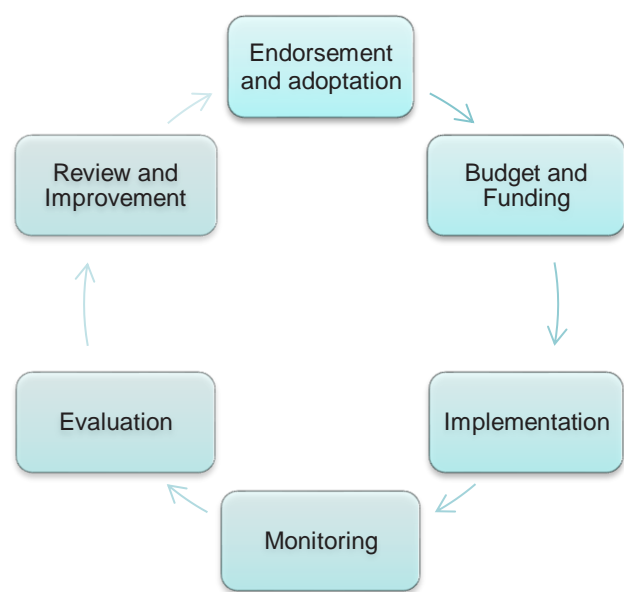


Figure 16: CMMF implementation and adaptive management framework

This plan has been developed using the available knowledge and expertise of staff, community and agency partners. Five-year outcomes were developed using a monitoring, evaluation, reporting and improvement process to link the objectives and actions, and provide measures of success that can be tracked over the life of the plan. Research and investigation activities have been identified to address critical knowledge gaps. Further prioritisation of knowledge gaps and investigations will be required throughout the review process.

Table 7: CMMF implementation and adaptive management framework

Endorsement and adoption	Endorsement of plan by Council, DELWP and Minister
Budget and Funding	Budget priority actions as part of City’s ongoing work in a ‘business as usual’ capacity. Seek and advocate for external collaborative funding, State and Federal pertaining to marine and coastal management.
Implementation	Implementation of actions by embedding into existing City processes and activities such as: Local laws, Planning schemes and overlays, Strategies, Master Plans.
Monitoring	Regular systemic and operational monitoring which includes action progress, risk assessments, community perception surveys and participation, triggers to review and update (changes in policy, legislation, scientific advancement).
Evaluation	Evaluate outcome success against planned outcomes.

Endorsement and adoption	Endorsement of plan by Council, DELWP and Minister
Review and Improvement	Formal review every five years or if triggered sooner through the monitoring and evaluation process. Outcomes from the review are embedded through improvement of the existing Plan or the development of a new CMMP.

MONITORING AND EVALUATION

Monitoring and the collection of data and evidence will be undertaken to inform progress towards the five-year (short-term and medium-term actions) outcomes and assess the effectiveness of management actions. Routine monitoring techniques are described below and a list of potential measures, indicators and evidence to support evaluation. Monitoring resources and funds will be implemented based on priority actions.

Monitoring five-year outcomes

We will develop an initial monitoring and data collection plan for five-year outcomes within the precinct master plan, in collaboration with the Project Steering Group. The data collected through existing monitoring programs will be used where possible. However, for some outcomes, there is a need to establish a baseline status in Year 1 of the plan.

This plan will be reviewed and updated every five years (due 2028). Implementation will be monitored by tracking progress and success of actions and outcomes, then reassessing and identifying improvement measures for future programs. This will be collected annually and linked to more frequent reporting measures. During the period of this plan, we will investigate and establish data management and reporting systems to support improved monitoring of plan actions and deliverables.

Evaluation

Evaluation questions drive the evaluation and reporting process and will provide the basis for assessing the success of this plan. The questions are also used to frame monitoring requirements and identify existing and potential sources of data.

Six categories are used to frame the evaluation questions:

1. Impact: the measurable effect of implementation in achieving the objectives of the plan.
2. Effectiveness: the success of implementation in producing the intended results.
3. Appropriateness: the suitability and alignment of actions to achieve the desired results.
4. Governance and management: the appropriateness of organisational structures and processes to support implementation.
5. Efficiency: the extent to which implementation has made the best use of available resources.
6. Legacy: the extent to which the impacts of the plan will continue after action is implemented.

Successful implementation of this plan requires commitment from the City and Victorian Government to prioritise coastal and marine management, integrate with our other plans and strategies, and deliver outcomes using existing mechanisms (see Table 2 in Appendix 1). The main drivers of this plan are the *Marine and Coastal Act 2018*, *Marine and Coastal Policy 2020*, *Marine and Coastal Strategy 2020* and *Distinctive Area Landscape – Bellarine Peninsula Statement of Planning Policies 2022*.

We will integrate actions in this plan in our existing plans and strategies, with several actions being primarily delivered through other programs of work that are being directed by the *Climate Change Response Plan 2020–2030*, *Biodiversity Strategy*, *Environment Strategy 2020–30*, *Settlement Strategy 2020*, and the *Open Space: Social infrastructure plan Generation one: 2020-23*.

Existing mechanisms will be used to deliver actions, including the annual capital works program, planning schemes, local laws, and asset management plans. Actions will also be integrated into our internal management and reporting systems for project tracking and review.

Formal reporting to the Minister and Department of Environment, Land, Water and Planning will occur through existing processes defined in the Statement of Expectations.

FURTHER CONSULTATION

Further consultation facilitated by the City will be undertaken to inform the draft *Southeast Bellarine Biolink Master Plan* and will include:

- Project Steering Group, Community Reference Group and Landholder Group monthly meetings
- Formalisation of the Project Steering Group through a Terms of Reference for ongoing input and consultation to provide project support, Plan review and action updates and
- Community input from the Greater Geelong and Borough of Queenscliffe.

For more information and to receive updates on the Master Plan visit <https://yoursay.geelongaustralia.com.au/SBCS>

Appendix 1

Legislation and policy framework

Management arrangements for marine and coastal areas is complex. All use, development and works on marine and coastal Crown land, requires consent under the *Marine and Coastal Act 2018*. Applications are made to DELWP as the landowner and delegate for the Minister under the Act. The proposal is assessed and must be consistent with relevant coastal and environmental plans or strategies that apply under the Act. This includes the *Marine and Coastal Policy 2020* and Coastal and Marine Management Plans. The City is required to obtain consent for any activity undertaken in managing its marine and coastal areas.

Guidance used to inform CMMP development.

The development of this CMMP has been guided by:

- *Marine and Coastal Act 2018*
- *Marine and Coastal Strategy 2022*
- *Marine and Coastal Policy 2020*
- *Guidelines for the Preparation of Coastal Management Plans 2022*
- *Paleert Tjaara Dja: Wadawurrung Healthy Country Plan 2020-2030*
- Department of Environment, Land, Water and Planning advice on the development of new Coastal and Marine Management Plans.

Table 1: Victoria's marine and coastal policy context

Title	What it does
<i>Marine and Coastal Act 2018</i>	The Marine and Coastal Act 2018 is the new State legislation replacing the previous Coastal Management Act 1995. The new Act aims to provides a more holistic and integrated approach to planning and managing the marine and coastal environment. The Act provides the overarching framework for the development of Coastal and Marine Management Plans.
Victorian Marine and Coastal Council	The Act established the Victorian Marine and Coastal Council to provide independent advice on marine and coastal issues.
<i>Marine and Coastal Strategy 2022</i>	The Marine and Coastal Strategy details the implementation actions for the Victorian Government, as well as outlining the tools for implementation. It is accompanied by an implementation and evaluation plan.
<i>Marine and Coastal Policy 2020</i>	The Marine and Coastal Policy 2020, was developed by the Victorian Marine and Coastal Council, in line with the <i>Marine and Coastal Act 2018</i> .The long-term vision is for a 'healthy, dynamic and biodiverse marine and coastal environment that is valued in its own right, and that benefits the Victorian community, now and in the future'. The <i>Coastal and Marine Management Plan Guidelines 2022</i> stem from this policy and provide the planning and framework for foreshore managers in the development of Coastal and Marine Management Plans.

Table 2: Government legislation, policy and strategic resources of relevance for the City of Greater Geelong

Level	Resource
State	Marine and Coastal Act 2018
	Marine and Coastal Policy 2020 / Guidelines for development of Coastal Management Plans 2022
	Marine and Coastal Strategy 2022
	Bellarine Peninsula Distinctive Area and Landscape Statement of Planning Policy 2022
	Crown Land (Reserves) Act 1978
	Catchment and Land Protection Act 1994
	Climate Change Act 2017
	Wildlife Act 1975
	Flora and Fauna Guarantee Act 1988
	Aboriginal Heritage Act 2006
	Heritage Act 2017
	Underwater Cultural Heritage Act 2018
	Siting and Design Guidelines on the Victorian Coast 2020
	Victoria's Coast – Preparing for the future 2018
	Public Participation in Government Decision-making 2015
	Protecting Victoria's Environment – Biodiversity 2037
	Victorian Water Safety Strategy 2016 – 2020
	Wave 5 Marine and Coastal Community Attitudes & Behaviours 2019
	CoastKit 2020
Regional	Paleert Tjaara Dja – Let's make country good together 2020-2030 (Wadawurrung Traditional Owners Aboriginal Corporation)
	Central Regional Coastal Plan 2015-2020 (Central Coastal Council)
	Corangamite Regional Catchment Strategy to 2027 (Corangamite Catchment Management Authority)
	Corangamite Regional Floodplain Strategy 2018-2028 (Corangamite Catchment Management Authority)
	Corangamite Waterway Strategy 2014-2022 (Corangamite Catchment Management Authority)
	Port Phillip Bay (Western Shoreline) & Bellarine Peninsula Ramsar Site Management Plan 2018 (DELWP)
Local	G21 Regional Growth Plan 2013 (Geelong Regional Alliance)
	Greater Geelong Planning Scheme as at 2022 (City of Greater Geelong)
	Environment Management Strategy 2020-2030 (City of Greater Geelong)
	Biodiversity Strategy (being updated) (City of Greater Geelong)
	Climate Response Plan 2021 (City of Greater Geelong)
	Settlement Strategy 2020 (City of Greater Geelong)
	Sustainability Framework 2020 (City of Greater Geelong)
	Open Space Social Infrastructure Plan Generation One 2020-2023 (City of Greater Geelong)
	Bellarine Peninsula & Corio Bay Local Coastal Hazard Assessment, Inundation Report 2016 (Our Coast)
	Barwon Coast CMMP 2018 (Barwon Coast Foreshore Committee of Management)
	Borough of Queenscliffe CMMP Draft 1 2021 (Borough of Queenscliffe)
	Greater Geelong and Bellarine Tourism Development Plan 2019-22 (Tourism Greater Geelong and The Bellarine)

Bibliography

- Adair, R. 2016, *Buckley Park Foreshore Reserve, Ecological Values Study*, Australis Biological, Prepared for City of Greater Geelong.
- Adair, R., 2021, *Ecological Monitoring at Buckley Park Foreshore Reserve*, Australis Biological, Prepared for City of Greater Geelong.
- Adair, R. 2009, *Monitoring Vegetation Change at Buckley Park 2009-2016*, Australis Biological, Prepared for City of Greater Geelong.
- Adams, A., 2019, Birdlife Australia, *Beach-nesting and Migratory Shorebirds and their threats on City of Greater Geelong ocean beaches*, , Birdlife Australia, Prepared for City of Greater Geelong.
- Barwon Coast Committee of Management, 2020, *Barwon Coast Marine and Coastal Management Plan (CMMP) 2020-2025*, Barwon Coast Committee of Management Inc.
- Borough of Queenscliffe, 2021, *Borough of Queenscliffe Marine and Coastal Management Plan (draft 1)*, Borough of Queenscliffe.
- CCMA, *Corangamite Regional Catchment Strategy to 2027*, Corangamite Catchment Management Authority.
- Our Coast, 2016, *Inundation Report Bellarine Peninsula & Corio Bay Local Coastal Hazard Assessment*, Our Coast.
- CDA Design Group, 2006, *Buckley Park Coastal Management Plan*. Prepared for City of Greater Geelong.
- CoGG 2003, *Biodiversity Strategy (being updated)*, City of Greater Geelong.
- CoGG, 2019, *Greater Geelong: A Cleaver and Creative Future (to 2049)*, City of Greater Geelong.
- CoGG, 2020, *Climate Change Response Plan 2020-2030*, City of Greater Geelong.
- CoGG, 2022, *City of Greater Geelong Community Profile*, City of Greater Geelong.
- CoGG, 2022, *The City Plan 2028-22 – Putting Our Community First*, City of Greater Geelong.
- CoGG, 2019, *Conservation Action Plan Hooded Plover*, City of Greater Geelong.
- CoGG, 2020, *Environment Strategy 2020-2030*, City of Greater Geelong.
- CoGG, 2017, *Fair Play Strategy*, City of Greater Geelong.
- CoGG, 2022, *Greater Geelong Planning Scheme*, City of Greater Geelong.
- CoGG, 2020, *Open Space Social Infrastructure Plan Generation One 2020-2023*, City of Greater Geelong.
- CoGG 2020, *Settlement Strategy*, City of Greater Geelong.
- CoGG 2020, *Shared Trails Masterplan*, City of Greater Geelong.
- CoGG 2020, *Stormwater Services Strategy 2020-2030*, City of Greater Geelong.
- CoGG, 2020, *Sustainability Framework 2020*, City of Greater Geelong
- DELWP, 2022, *Marine and Coastal Management Plan Guidelines (draft)*, State of Victoria Department of Environment, Land, Water and Planning.
- DELWP, 2020, *Marine and Coastal Policy*, State of Victoria Department of Environment, Land, Water and Planning.
- DELWP, 2020, *Marine and Coastal Strategy (draft)*, State of Victoria Department of Environment, Land, Water and Planning.
- DELWP, 2019, *Bellarine Peninsula Statement of Planning Policies (draft)*, State of Victoria Department of Environment, Land, Water and Planning.
- Rosengren, N., 2010, *Buckley Park Foreshore Reserve, Context, Evolution, Morphology, Environmental Processes*, Prepared for Friends of Buckley Park.
- Tourism Greater Geelong and The Bellarine, 2019, *Greater Geelong and Bellarine Tourism Development Plan 2019-22*, Tourism Greater Geelong and The Bellarine.
- Hobsons Bay City Council, 2020, *Coastal and Marine Management Plan (draft)*, Hobsons Bay City Council.
- WTOAC, *Healthy Country Plan: Paleert Tjaara Dja – Let's make country good together 2020-2030*, Wadawurrung Traditional Owners Aboriginal Corporation.

CITY OF GREATER GEELONG

WADAWURRUNG COUNTRY

PO Box 104, Geelong VIC 3220

P: 5272 5272

E: contactus@geelongcity.vic.gov.au

www.geelongaustralia.com.au

CUSTOMER SERVICE CENTRE

100 Brougham Street

Geelong VIC 3220

8.00am – 5.00pm

LATEST NEWS:

@CityofGreaterGeelong



@GreaterGeelong



@CityofGreaterGeelong



CityofGreaterGeelong