

THE CITY OF
GREATER GEELONG

GEELONG OUTDOOR DINING GUIDELINES CONSULTATION SUMMARY REPORT

NOVEMBER 2022

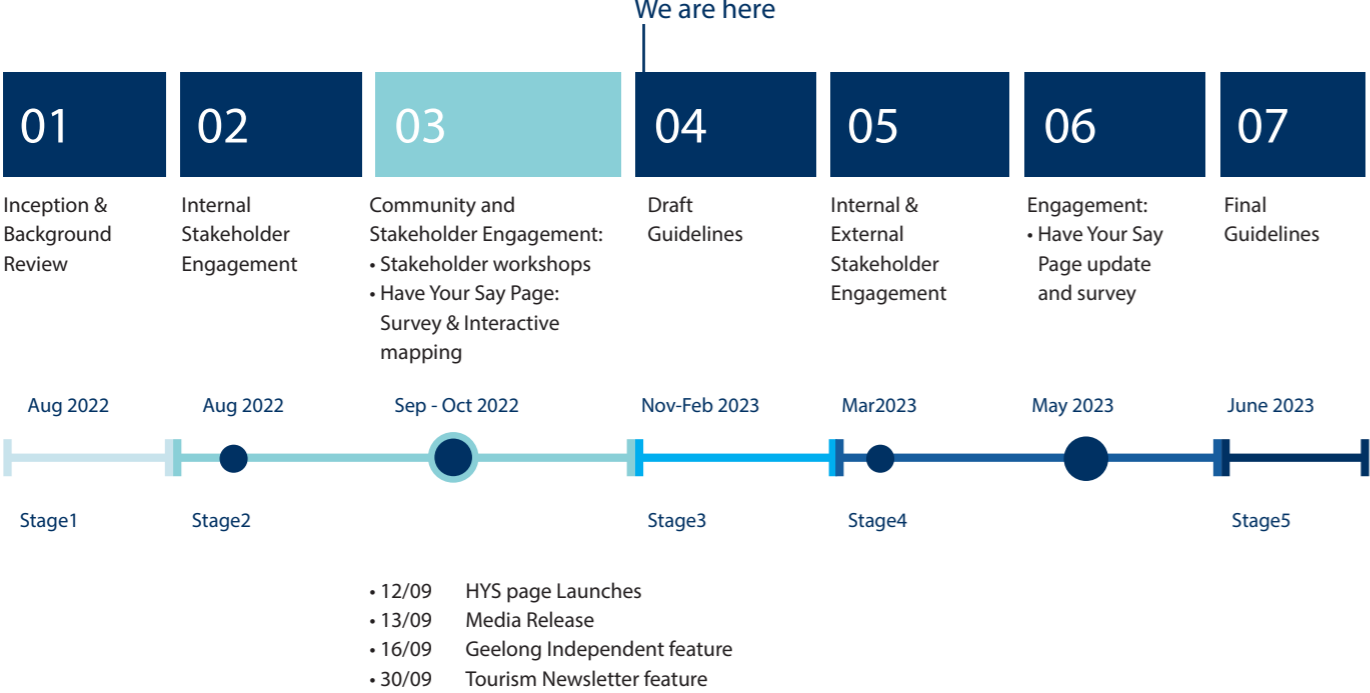
ACKNOWLEDGMENT OF COUNTRY

The City of Greater Geelong acknowledges the Wadawurrung People as the Traditional Owners of this land, waterways and skies. We pay our respects to their Elders, past and present.

We acknowledge all other Aboriginal and Torres Strait Islander People who are part of the Greater Geelong community today.

INTRODUCTION

Project timeline



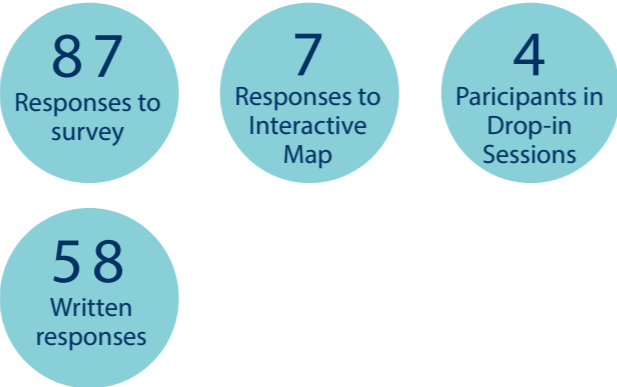
Engagement Phase 1 Overview

Stakeholder and Engagement Round 1 was undertaken to inform the development of Draft Outdoor Dining Guidelines.

The engagement process consisted of public survey data collection, online and in person workshops. Have your say surveys were hosted through City of Greater Geelong Councils website, invitations were provided to traders associations and known business owners, the survey was also made publicly available for comment by Geelong community members. Local Traders, business owners and business associations were invited to register for online and in person workshops. Internal council departments were part of several workshops to discuss issues and opportunities.

The following engagement activities took place between 12 September 2022 - 16 October 2022:

- 1. Have your Say survey.
- 2 Have your Say interactive map.
- 3. Internal Council departments, collaborative workshops.
- 4. External Stakeholder Emergency Services workshops.
- 3. Online and in person community 'Drop in' sessions.



HAVE YOUR SAY

Survey Questions

Trader

What type of business do you own or represent?

- Cafe
- Dine in Restaurant
- Takeaway
- Food Truck
- Bakery
- Other (please specify)

What is your current outdoor dining situation?

- Occupy in the footpath
- Within a parking space
- Within a laneway or pedestrianised street
- In a park or open space
- Other (please specify)
- None

What are your typical operating hours?

- Morning only
- Morning and Midday
- Morning til Afternoon
- Midday and Afternoon
- Midday and evening
- Evening only

What are the current traffic conditions of your site?
Select multiple if applicable.

- < 40km/h speed zone
- 40km/h speed zone
- 50km/h speed zone
- 60km/h speed zone
- > 60km/h speed zone

Community

Do you support Outdoor Dining expansion in Geelong?

- Yes
- No

Council rolled out 'pop up' outdoor dining in response pandemic related restrictions. Would you like to see outdoor dining become more permanent?

- Yes
- No

Which of these outdoor dining spaces do you prefer?

- Parklets (seating within a car parking space)
- Footpath Trading (seating on the footpath)
- Laneways and pedestrian only streets
- Parks and open spaces

When would you use these spaces?

- Summer
- Autumn
- Winter
- Spring
- All year round

What factors do you think would improve the outdoor dining experience?

- More planting and trees
- Increased shading
- Less barriers
- More accessible platforms
- More barriers
- Other (please specify)

Trader

What type of outdoor dining are you interested in applying for or renewing?

On street 'Parklet'

Footpath Dining

Laneway or Pedestrianised street

Park of open space

Other (please specify)

What permit would suit your business?

6 month 'trial' of outdoor dining with the option to extend

1 year 'renewable' permit

Other (please specify)

What is your spending capacity to install an outdoor dining space? *Assuming this cost would take into account platforms, furniture, fencing, labor and all other costs associated with the installation*

\$0 - \$500

\$500 - \$1,000

\$1,000 - \$2,500

\$2,500 - \$5,000

\$5,000 - \$10,000

\$10,000 +

Do you have access to the following professional services?

Professional designers (Architects, Landscape architects, Industrial designers)

Builders

Carpenters

Engineers

Other design or building professionals

What amenities would you provide in your outdoor dining space?(select as many as you'd like)

Tables

Chairs

Benches

Umbrellas

Canopy

Plants

Bike Racks

Outdoor Heaters

Lighting

Other (please specify)

Do you have any comments you would like to be considered in the development of Geelong's Outdoor Dining Guidelines?

Community

What amenities do you think would improve the outdoor dining experience? (select as many as you'd like)

Tables

Chairs

Benches

Umbrellas

Canopy

Plants

Bike Racks

Outdoor Heaters

Lighting

Other (please specify)

What would you like to change about outdoor dining moving forward? (comment)

SURVEY: WHAT WE HEARD

80%

of traders who responded currently occupy footpaths for outdoor dining and want to renew their permits

80%

of traders who responded have access to professional services

Key concerns

- Outdoor dining near bus stops.
- Too much music and noise after 11pm.
- Limited footpath accessibility.
- Loss of car parking spaces.
- Moving furniture at open and close of business.
- Outdoor dining in high traffic areas is unsafe.
- Skiplets are dangerous and unappealing.
- Limited pedestrian thoroughfare in public spaces.
- Liquor law limitations outside.

Opportunities

- Encourage outdoor entertainment.
- Encourage more pet friendly dining areas.
- Encourage more outdoor dining in low speed traffic areas.
- Aim for all year round facilities.
- Provide family focused areas.

Trader:

"We are interested in permanent furniture and a canopy/shade sail/ permanent umbrellas on the footpath in front of our cafe. We want to develop the outdoor space into something more comfortable and safe for our community, and make it easier on our staff (give them more time to actually serve our customers rather than spending time moving furniture in and out of the cafe)"

Trader:

"We have a great outdoor area
We would love if anything for more permanent fixtures so our staff didn't have to bring inside"

98%

of community members support Outdoor Dining expansion in Geelong

86%

of community owners think more planting and trees will improve their outdoor dining experience

- Ensure pedestrian priority.
- Maintain two way accessible footpaths for all pedestrians.
- Ensure equitable access for people with limited mobility.
- Encourage more permanent seating.
- Provide permanent shade structures.
- Provide more spaces for art, lighting and planting.
- Secure and safe barriers to protect dining areas and make patrons feel safe.
- Promote greenery and decoration of outdoor dining areas.
- Help vendors select the types of barriers, lighting seating to enhance outdoor dining areas.
- Provide more heating.
- Provide overhead lighting.
- The waterfront may be considered as a seperate special setting.

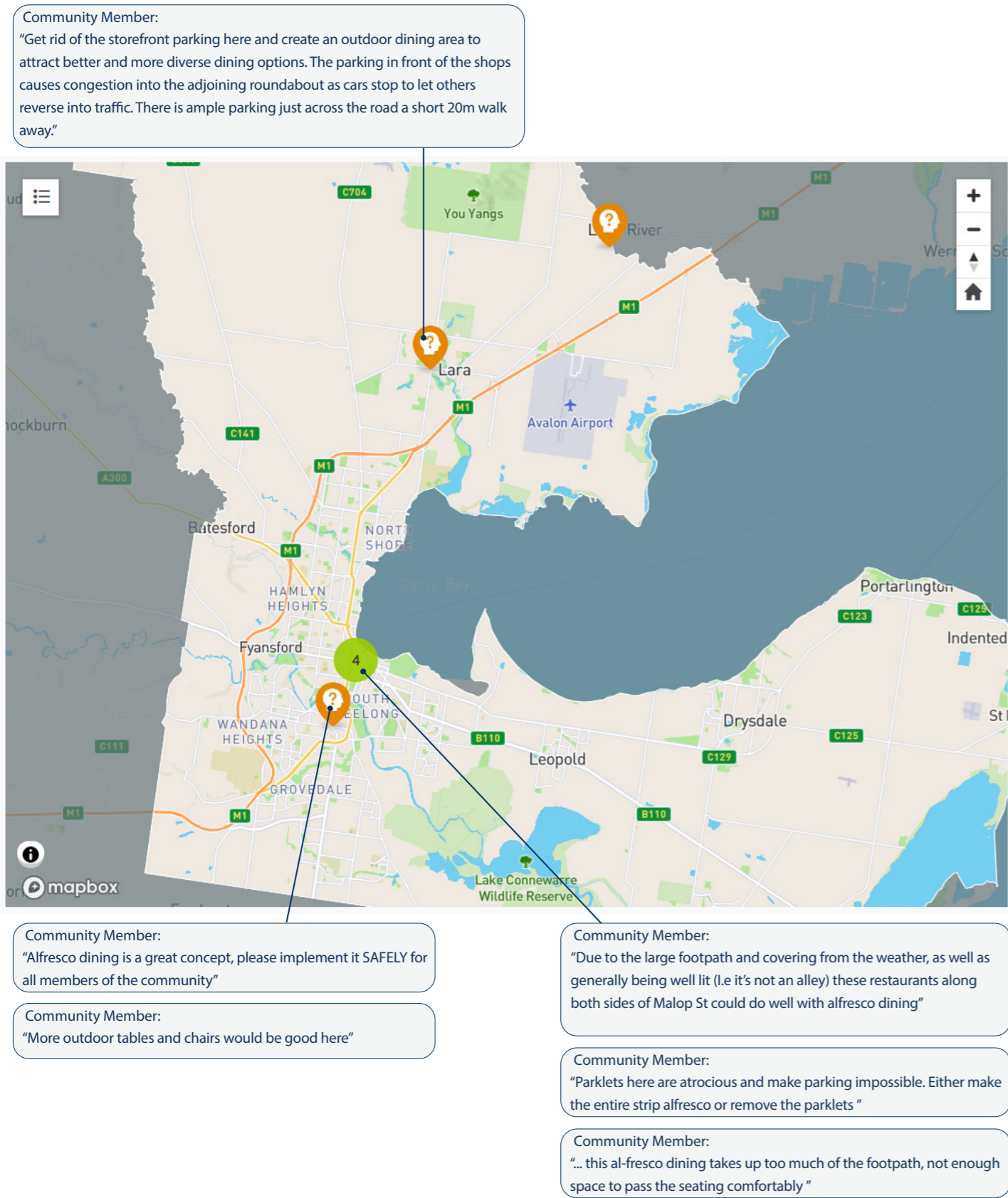
Community Member:

Don't put them on or close to bus stops. Speaking as a driver, they are dangerous to approach with the pedestrians not focused on the bus moving close to them. The bus is forced out into the road and effecting traffic flow and vehicle interaction becomes dangerous. In one case at a wine bar in Point Lonsdale, patrons had moved sun umbrellas close enough to the curb where they over hung onto the roundabout causing them to be hit by a bus mirror, knocking them over onto diners.

Community Member:

"Local shopping precincts should also be a priority- like East Geelong and Geelong West as these places are meeting places for the community."

INTERACTIVE MAP: WHAT WE HEARD



EXTERNAL STAKEHOLDER WORKSHOP

TRADER WORKSHOP

Traders were invited to attend stakeholders workshop in early October

Stakeholder workshop process

- We reached out to the Geelong Business community for valuable input into the City of Greater Geelong Outdoor Dining Guidelines. We scheduled two workshops- online and in-person.
- While workshop attendance was low, we were able to capture key issues.



What we heard

The engagement highlighted key gaps in existing process of permit applications, issues with existing outdoor dining and aspirations for the future;

- Permanent outdoor dining is preferred by traders, the sentiment was towards fixed furniture, umbrellas, lighting and shelter to allow for an all year round comfortable outdoor dining experience.
- Guidelines should promote the activation of dormant public spaces, for example laneways.
- Guidelines have the opportunity to be nuanced to the context of Geelong, this means they can build on the qualities of dining precincts such as Little Malop st and Ocean Grove.
- Waterfront properties may need to be considered with their own perimeters regarding setbacks, thoroughfare and engineering requirements.
- Flimsy barriers and temporary outdoor dining are not desired by the community, more robust structures make the dining experience feel safer and more formalised. 'Pop-up' solutions are seen as a Covid response and not proffered moving forward.
- Guidelines need to allow for the activations that don't fit into the current set of policies around outdoor dining.
- Need to allow for bespoke outdoor dining experience specific to the character of each business and offering.
- Allow for the different street conditions in Geelong, including, laneways, footpaths and pedestrianised streets.
- Fixed barriers along the entire street edge can create a roadways that results in faster traffic movement.
- The guidelines need to allow business owners to innovate and create unique outdoor dining experience whilst retaining a safe and equitable public realm.
- Guidelines need to establish a clear pathway for business owners in designing and implementing outdoor dining interventions.
- How the City responds to non-conforming/complex/innovative applications.

OTHER STAKEHOLDER WORKSHOPS

Emergency Services

Consultants and the City team met with representatives from Emergency Services and a few key issues were marked out, including:

- Need to identify spots where permanently fixed vs temporary furniture could be placed, for example clearways for ambulances and firetrucks.
- Areas to avoid outdoor dining, for example around areas where fire hydrants and boosters are placed.
- Safety precautions necessary with furniture and fixtures.

Have Your Say Engagement: Advertised in the Geelong Independent



SECTION: GENERAL NEWS ARTICLE TYPE: NEWS ITEM AUDIENCE : 22,000 PAGE: 10
PRINTED SIZE: 123.00cm² REGION: VIC MARKET: Australia ASR: AUD 289 WORDS: 211
ITEM ID: 1703925500



16 SEP, 2022

City plans for outdoor dining

Geelong Independent, Geelong

Page 1 of 1

City plans for outdoor dining

The City of Greater Geelong is seeking feedback from hospitality businesses and the general community to help develop Outdoor Dining Guidelines.

The Outdoor Dining Guidelines are being prepared to increase clarity and direction for businesses seeking to obtain approval for alfresco, parklet or other types of outdoor dining. The parklets were introduced during the pandemic to increase the number of patrons that hospitality venues could accommodate.

Mayor Peter Murrphy said all feedback will be used to inform the development of the Outdoor Dining Guidelines, helping businesses to cater to more customers and operate viably within the health restrictions. "We want to reduce hurdles and make it easier for businesses to expand their outdoor dining while protecting access to public space," he said.

The guidelines aim to:

- Provide guidance to businesses wishing to apply to establish or extend their outdoor dining areas;
- Enable safe dining options for the community;
- Provide a decision-making framework for evaluating applications;
- Ensure the application process is clear and simple; and
- Assist businesses to comply with COVIDSafe Plans and patron limits.

Go to yoursay.geelongaustralia.com.au/outdoordining to provide feedback.

Hospitality owners can register to attend a workshop on Monday, October 3 online via yoursay.geelongaustralia.com.au/outdoordining or Tuesday, October 4 at Wurriki Nyal Civic Precinct, Mercer Street, Geelong.

Have Your Say Engagement: Advertised in Tourism Newsletter



Do you have a business in Greater Geelong with outdoor dining?

Or would you like to apply? Then you may be interested in news the City of Greater Geelong is currently developing its Outdoor Dining Guidelines.

Creating the guidelines will help hospitality venues establish and operate outdoor dining areas while protecting public safety, accessibility, and amenity.

There is currently an online survey (open until 17 October), interactive map to drop comments and two workshops scheduled for next week (Mon 3 & Tues 4 October) you can provide feedback via.

[>Find out more, register and take survey](#)

CITY OF GREATER GEELONG

PO Box 104

Geelong VIC 3220

P: 5272 5272

E: contactus@geelongcity.vic.gov.au

www.geelongaustralia.com.au

CUSTOMER SERVICE CENTRE

100 Brougham Street

Geelong VIC 3220

8.00am – 5.00pm

© City of Greater Geelong 2022

LATEST NEWS:

 [@CityofGreaterGeelong](#)

 [@GreaterGeelong](#)

 [@CityofGreaterGeelong](#)

 [CityofGreaterGeelong](#)